



TWO BAYOU DELTA FARM

An Agricultural and Recreational Investment Opportunity

2,224± Total Acres | \$16,159,382.00

Jefferson County, Arkansas



AGRICULTURE | RECREATION | TIMBERLAND

Traditional Brokerage + Sealed Bids + Consulting

LICENSED IN ARKANSAS, LOUISIANA, MISSISSIPPI, AND TENNESSEE



TWO BAYOU DELTA FARM

QUICK FACTS

Acreage

2,224± total acres

- 2,042.3± total cropland acres that have all been precision leveled

Location

Pine Bluff, Arkansas

Access

Ballenger Farm: Arkansas State Highway 79, Bobo Farm: Arkansas State Highway 65, Hildebrand Farm: Abernathy Road, Joiner Farm: Winston Road

Crop Rotation

Rice, corn, and soybeans

Recreation

Waterfowl hunting

Notable Features

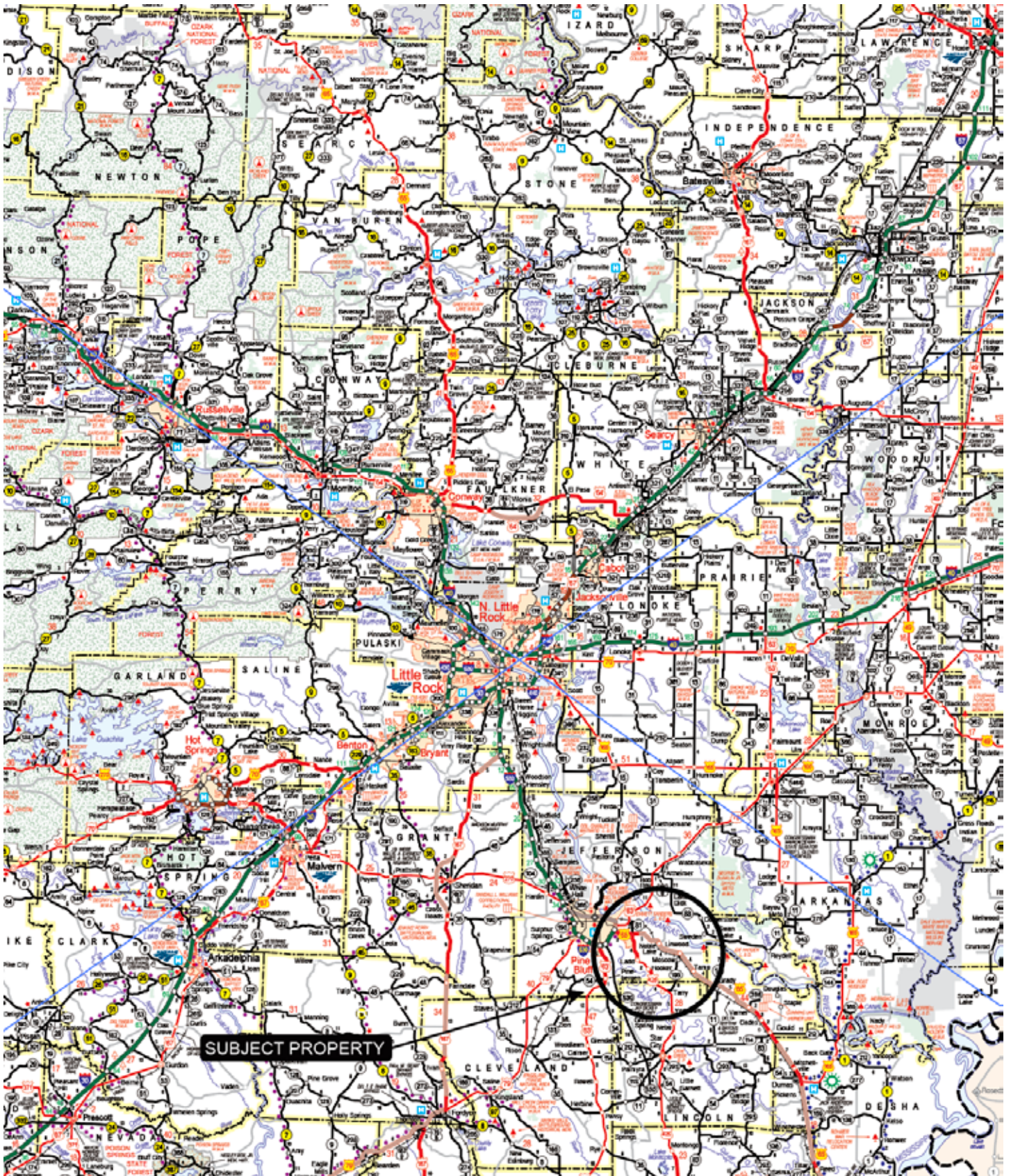
- 1,647.68± cropland acres level to a zero grade
- Headquarters site that includes a shop, equipment shed, and 160,000 bushels of grain bin storage
- Excellent water, soils, and tenant pool

Offering Price

\$16,159,382.00



VICINITY MAP



PROPERTY DESCRIPTION

TWO BAYOU DELTA FARM

The Two Bayou Delta Farm consists of approximately 2,224 +/- total acres, in four tracts, located in Jefferson County, Arkansas just east and southeast of the town of Pine Bluff. This is a great opportunity to acquire a highly improved and efficient farm that has excellent water, soils, and yield history all while located in a strong tenant pool with 160,000 bushels of grain storage in place. The Farm Service Agency office reports a total of 2,042.3 +/- cropland acres that are all irrigated and precision leveled. Below we will provide a summary of each individual farm.

The Ballenger Farm consists of 188 +/- total acres with 174.88 +/- cropland acres per the Farm Service Agency office. All five fields have been leveled and are irrigated by two wells and a network of underground pipe. The farm has a planting history of corn and soybeans. Arkansas State Highway 79 forms the southern boundary and provides excellent access to the farm.

The Bobo Farm consists of 359 +/- total acres, and the Farm Service Agency reports 347.57 +/- cropland acres that are all precision leveled. Three fields have been leveled to a zero grade and total 155.22 +/- acres. All of the cropland acres are irrigated by four wells and a network of underground





pipe. The farm has a great soils mix which has allowed for a diverse planting history that includes corn, soybeans, and rice. Along the northern boundary the farm has frontage along Arkansas State Highway 65 with two permitted ingress drives which provides great access.

The Hildebrand Farm is a very nice large contiguous farm that boasts 1,283 +/- total acres with approximately 1,137 +/- cropland acres that are all leveled to a zero grade. This is a highly improved rice farm with more than ample irrigation that allows the farm to have a high percentage of rice grown on the farm each year. Located on the southwest corner of the farm along Cousart Bayou is a 16 +/- acre reservoir that is re-charged by a re-lift in the bayou. Water from the reservoir then gravity flows into the field immediately to the northeast which then feeds a flume ditch that strategically runs through the central and eastern portion of the farm providing surface water to much of the farm. Additional irrigation infrastructure includes five wells and a network of underground pipe. Abernathy Road bisects the eastern portion of the farm and provides good access. Located east of Abernathy Road is a great headquarters site that includes a 2,000 +/- square foot shop that has concrete floors, a 7,000 +/- square foot shed for equipment storage, and 160,000 bushels of grain storage. The grain storage consists of four (4) forty thousand (40,000) bushel bins on a loop that were constructed in 2018.

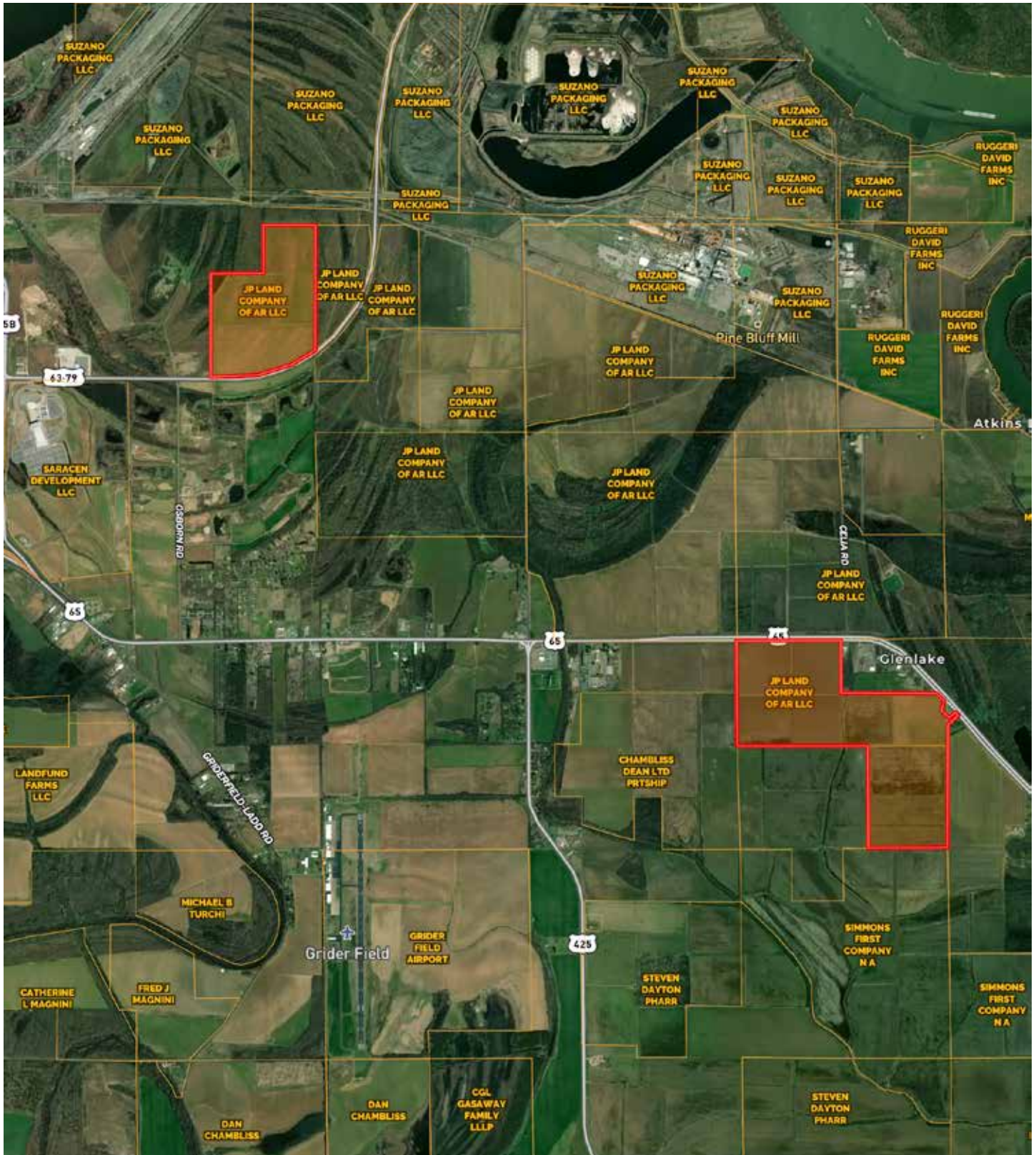
The Joiner Farm consists of 394 +/- total acres with 382.85 +/- cropland acres per the Farm Service Agency all of which are irrigated by four wells and a network of underground pipe. All of the tillable acreage has been leveled to a zero grade with the exception of the most northern field which is 27.39 +/- acres. Access is provided at the northwest corner of the farm via Winston Road.

All of the farms offer waterfowl hunting but in particular the Hildebrand and Joiner farms offer outstanding field hunting that could be leased out to provide additional annual income to the landowner.

This is a great opportunity to acquire a large investment grade farm that is highly improved with strong water and soils.

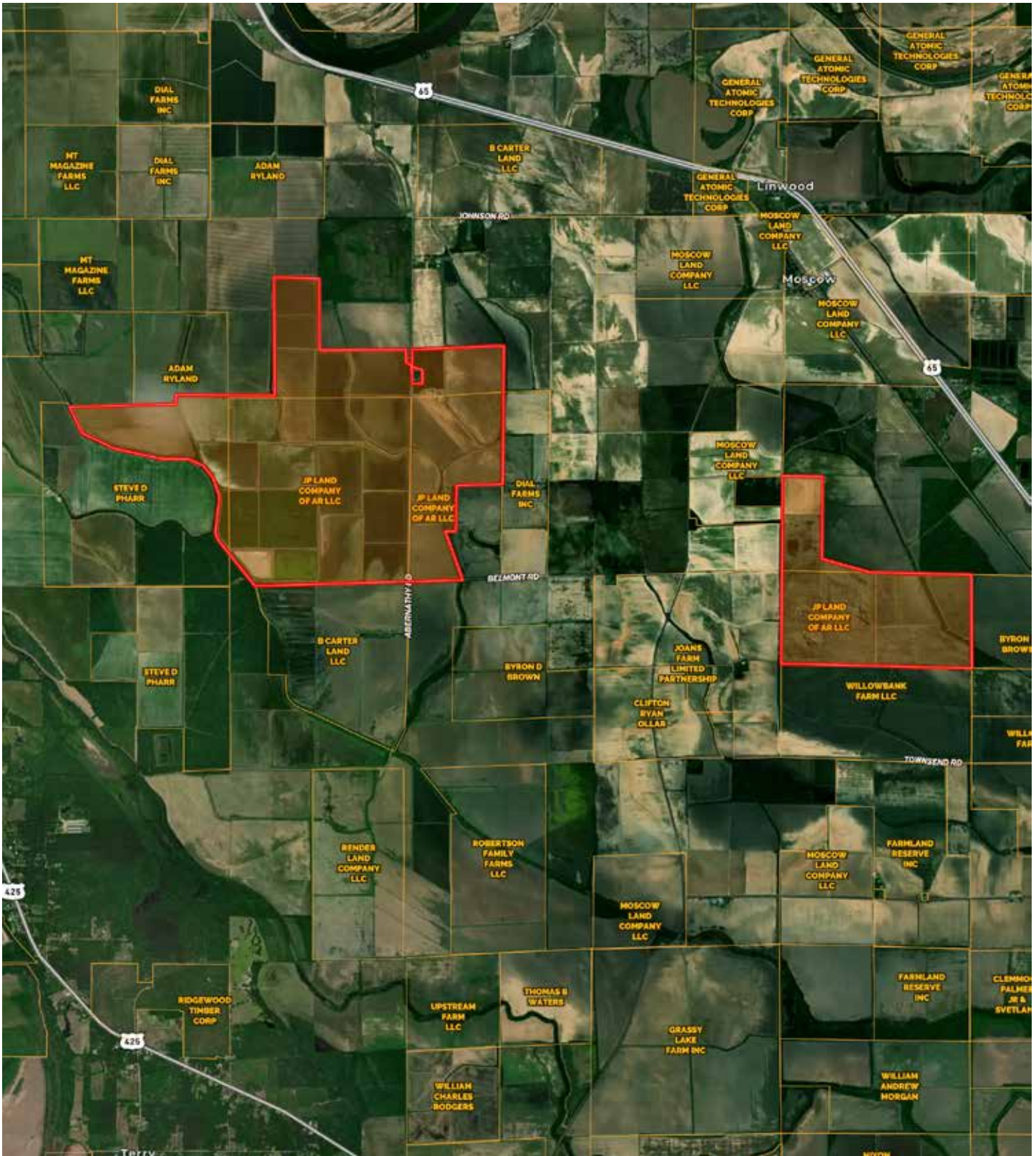
OWNERSHIP MAP

BALLENGER FARM AND BOBO FARM

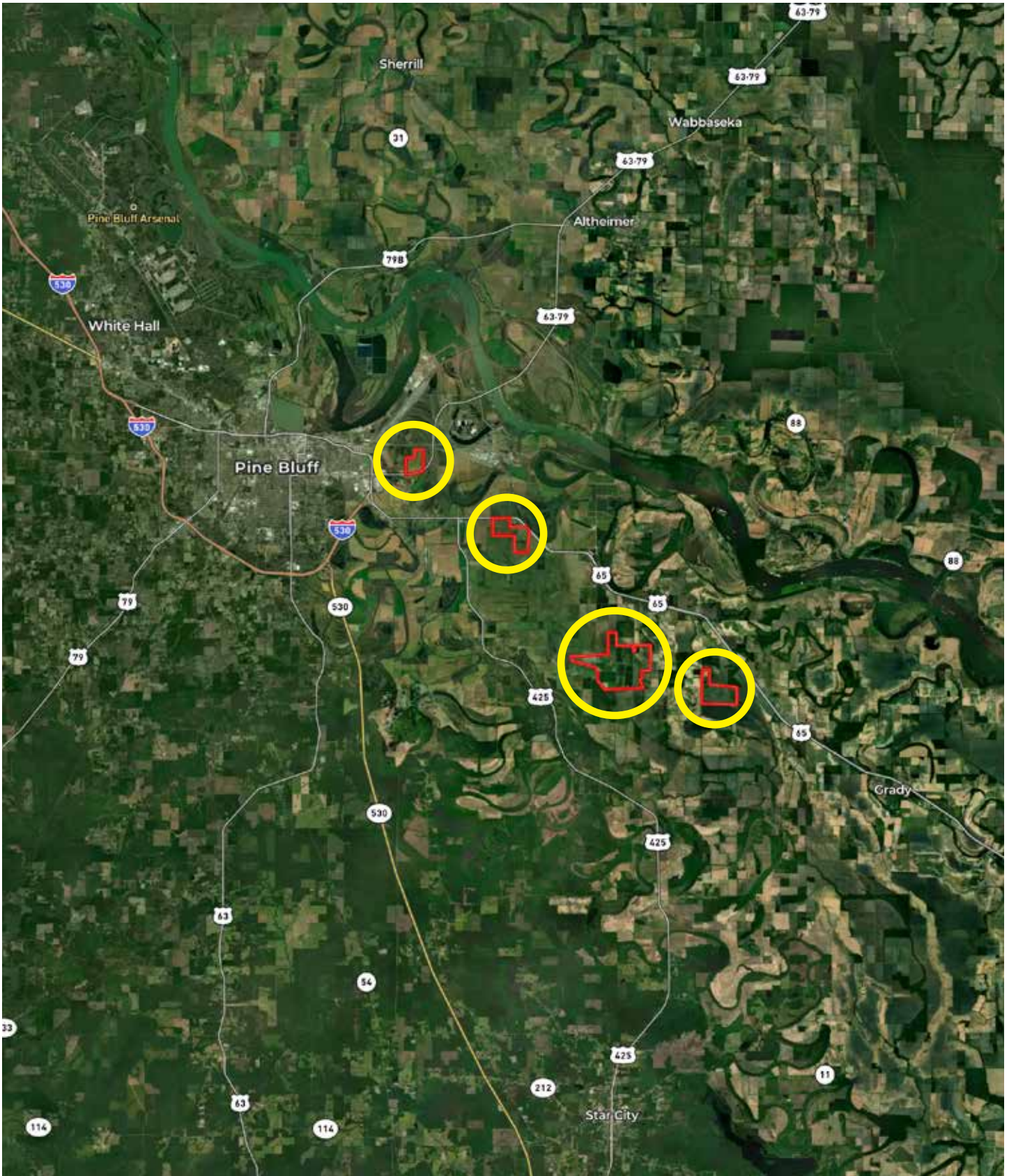


OWNERSHIP MAP

HILDEBRAND FARM AND JOINER FARM



LOCATION MAP





LOCATION & ACCESS

Jefferson County, Arkansas
Southeastern Region of Arkansas

Mileage Chart

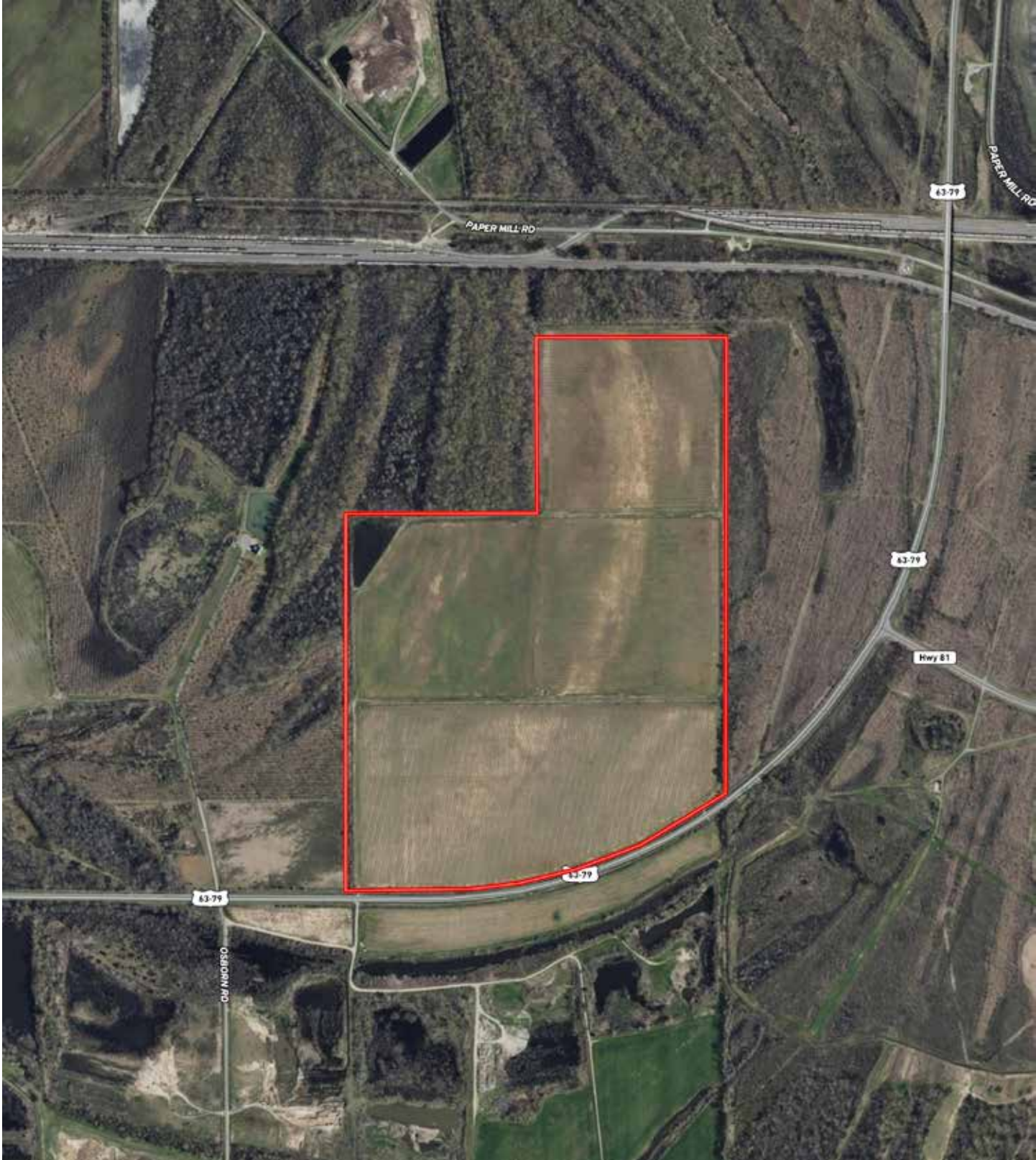
Pine Bluff, AR	7 Miles to 18 Miles
Stuttgart, AR	35 Miles to 45 Miles
Little Rock, AR	54 Miles to 64 Miles

Ballenger Farm: Arkansas State Highway
79, Bobo Farm: Arkansas State Highway 65,
Hildebrand Farm: Abernathy Road, Joiner Farm:
Winston Road



AERIAL MAP

BALLENGER FARM (188± ACRES)



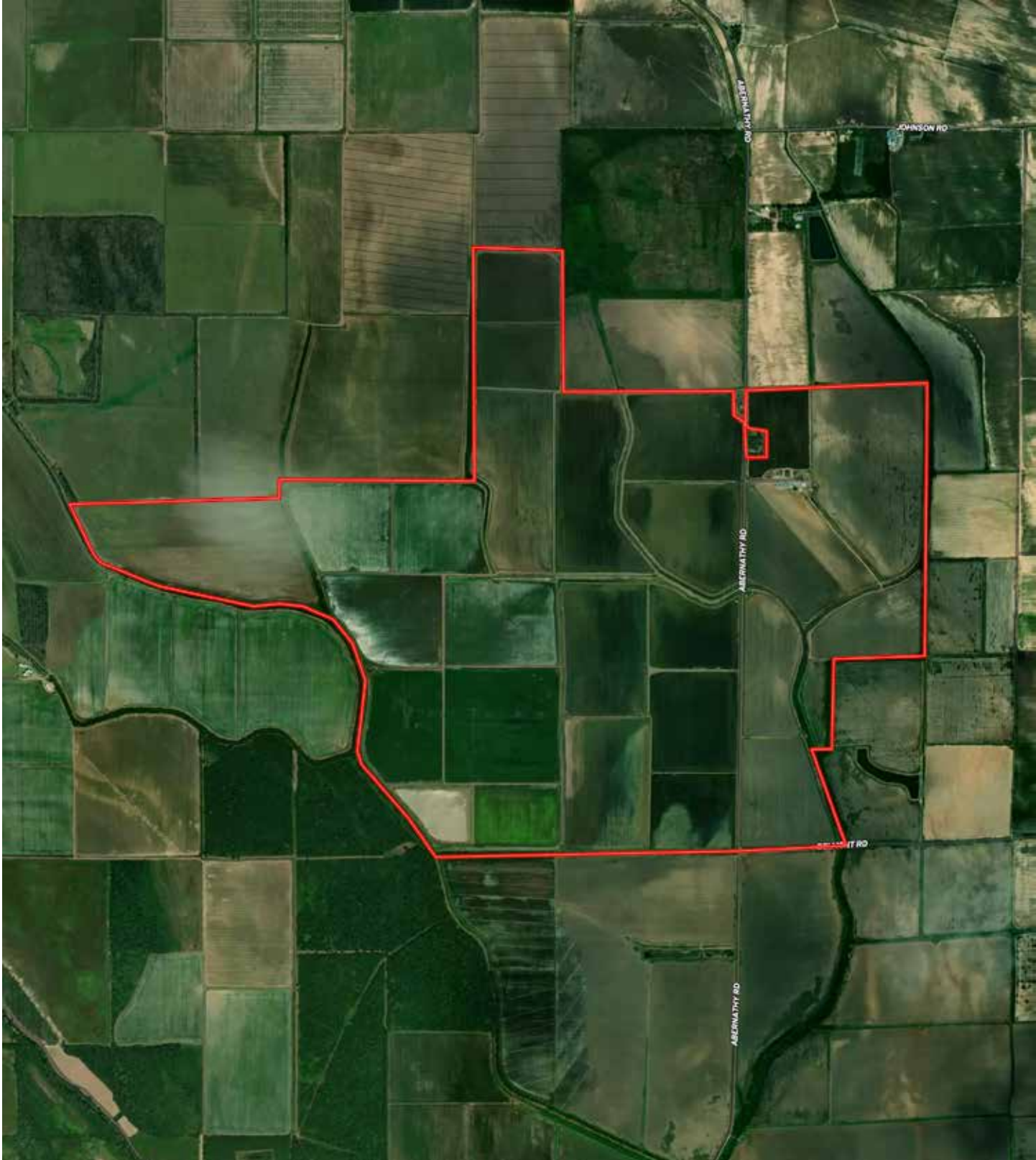
AERIAL MAP

BOBO FARM (359± ACRES)



AERIAL MAP

HILDEBRAND FARM (1,283± ACRES)



AERIAL MAP

JOINER FARM (394± ACRES)







FARM INFORMATION

Tillable Acreage

2,042.3± acres

Crop Rotation

Rice, Corn, and Soybeans

Irrigation

Please see the irrigation maps included in this brochure for details on the infrastructure of each tract.

Farm Contract

The farm is rented for the 2026 crop year.

Farm Bases

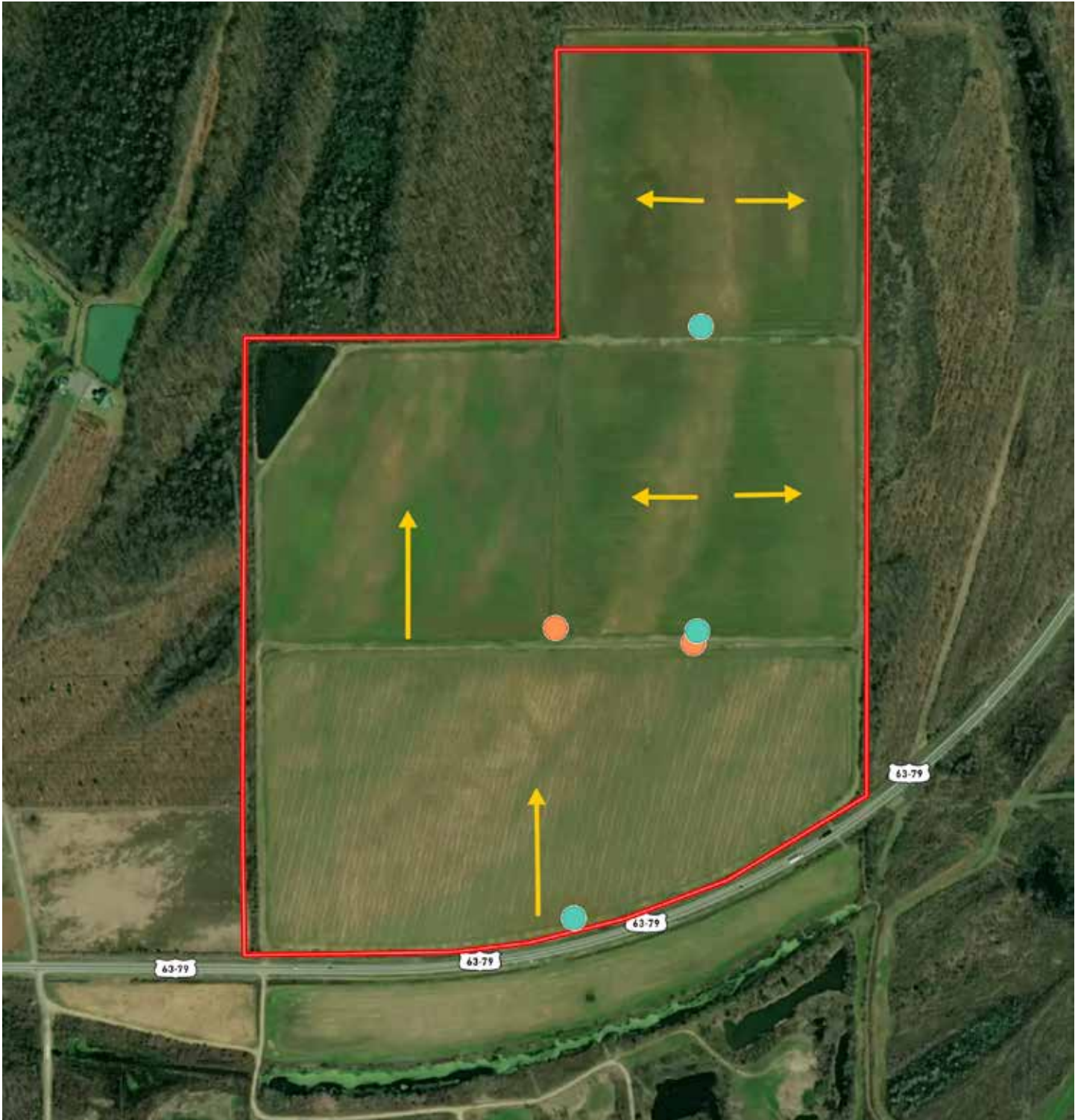
Copies of the Farm Service Agency (FSA) 156EZ can be found in this brochure.



HILDEBRAND FARM

IRRIGATION MAP

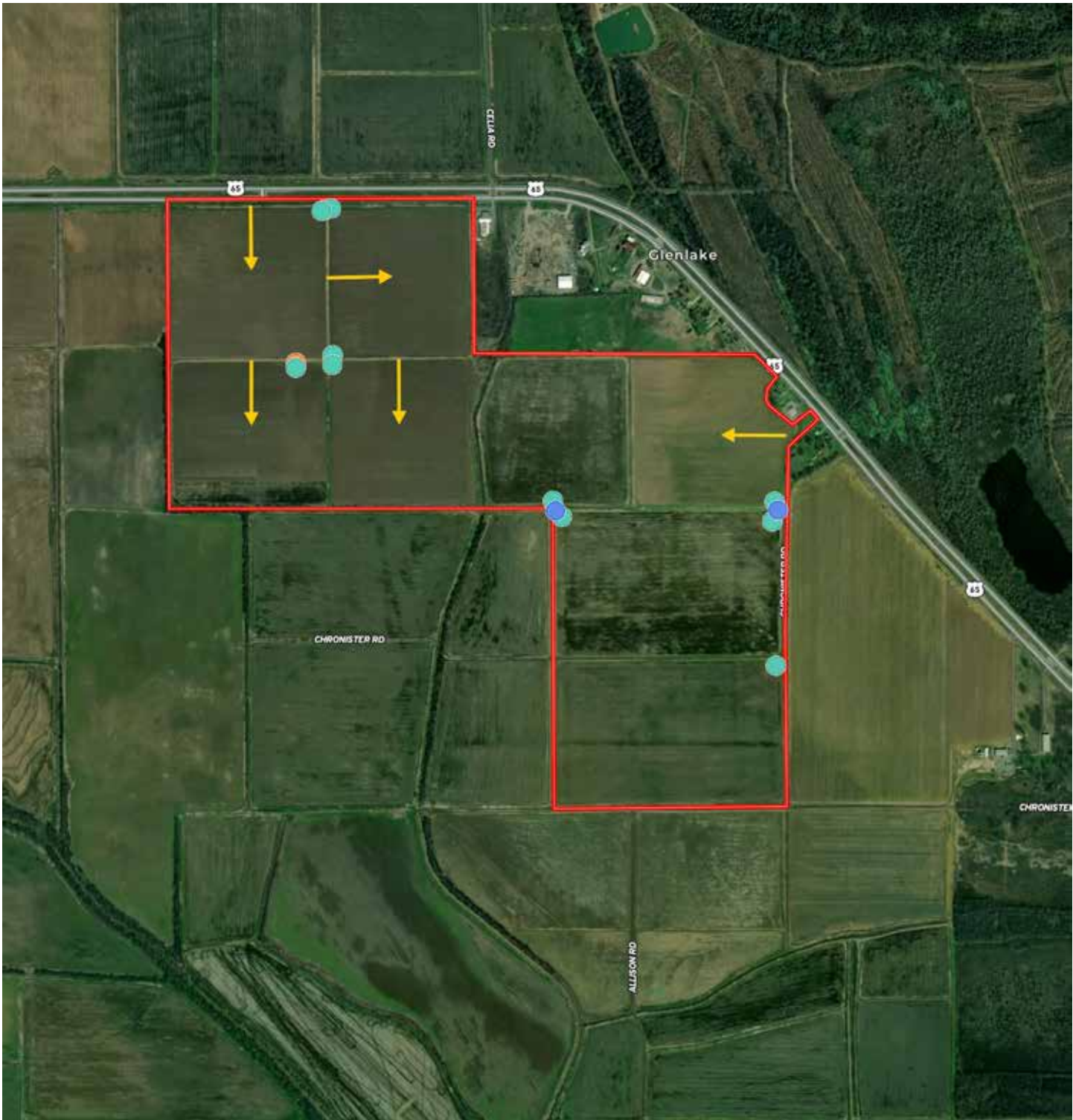
BALLENGER FARM



● 8" Diesel Turbine ● Riser → Water Flow Direction

IRRIGATION MAP

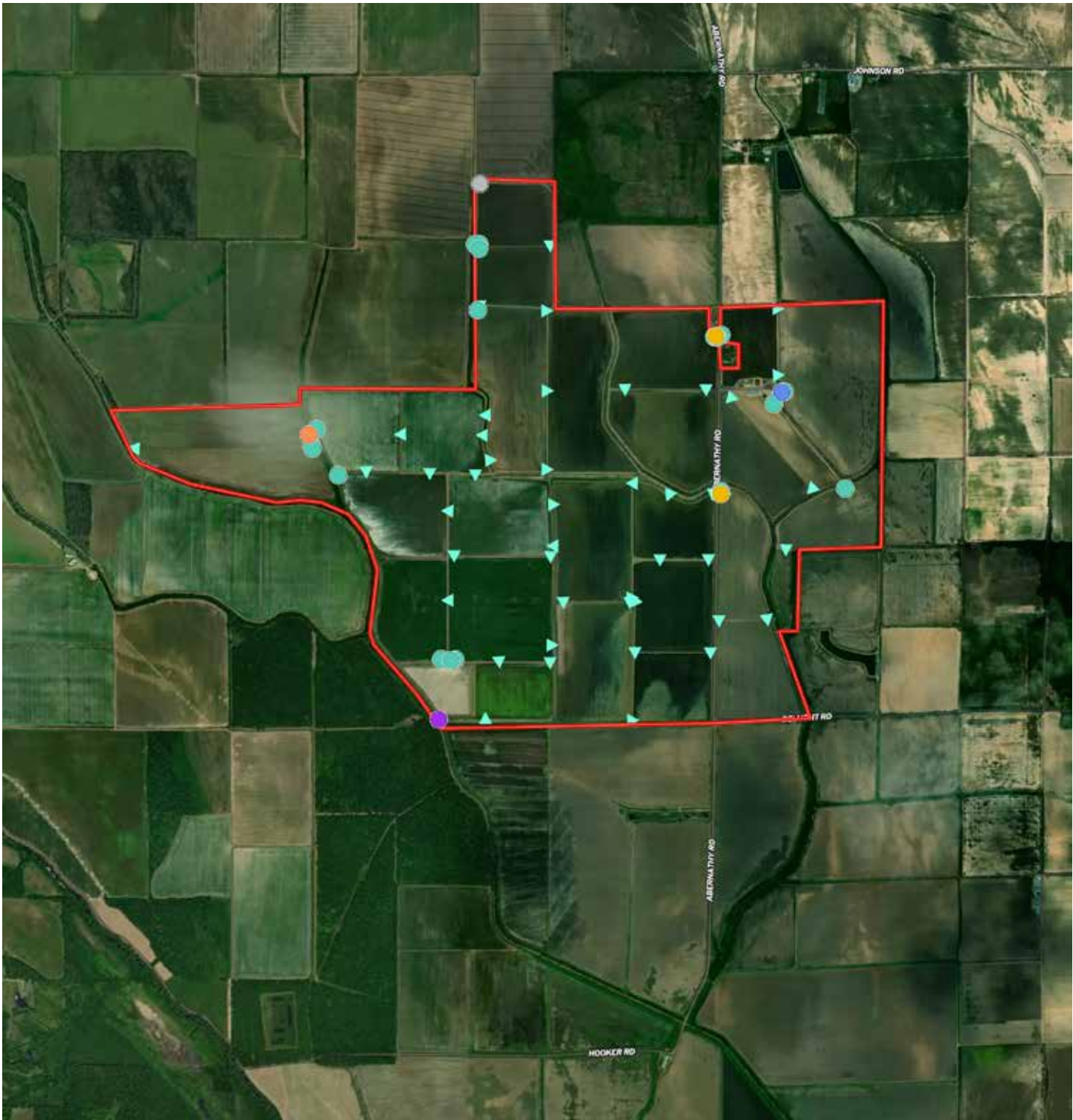
BOBO FARM



- 8" Electric Submersible
- 8" Electric Turbine
- 8" Diesel Turbine
- Riser
- Water Flow Direction

IRRIGATION MAP

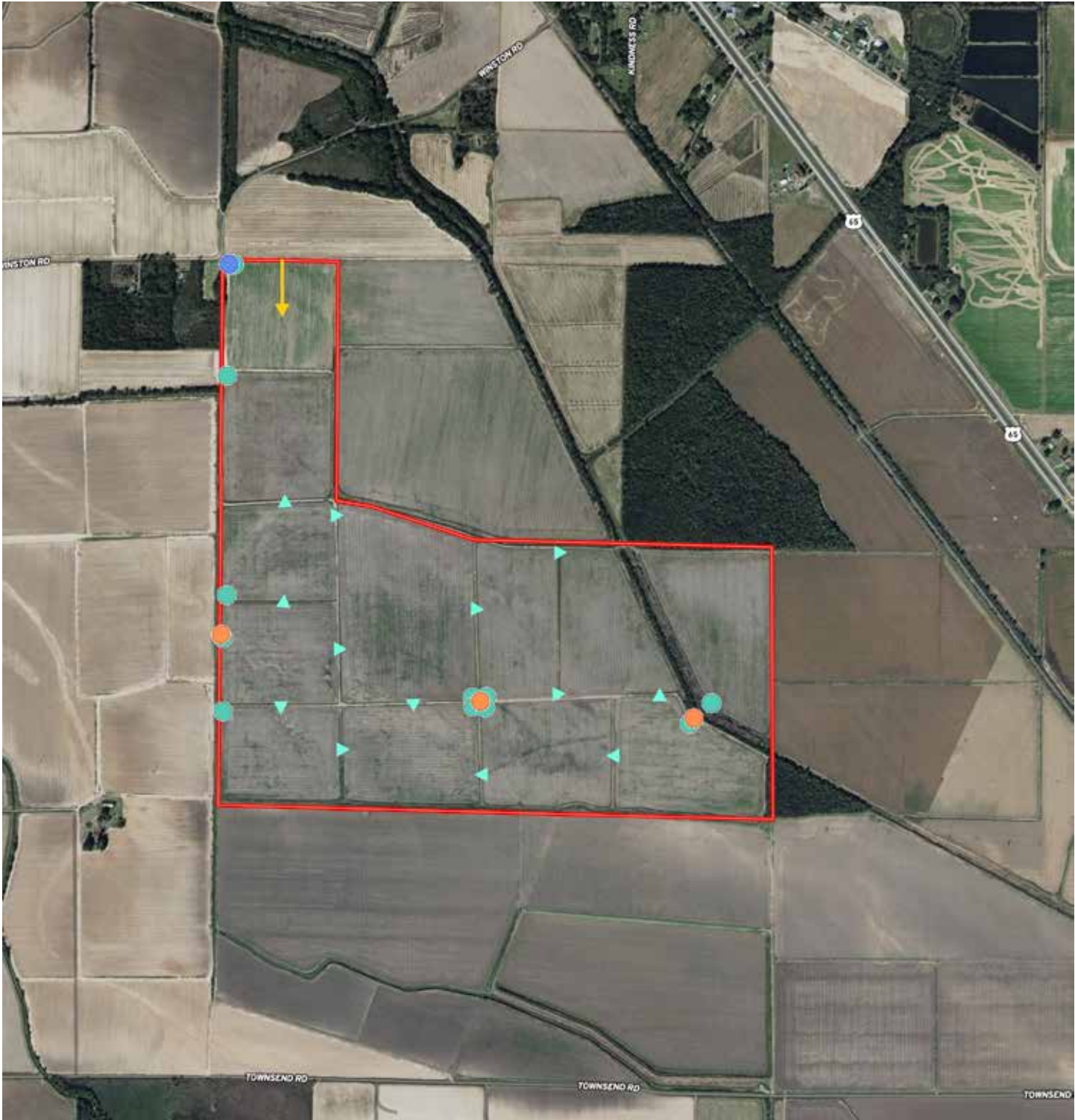
HILDEBRAND FARM



- Water Flow Direction
- 8" Electric Turbine
- 10" Electric Turbine
- 14" Electric Turbine
- 10" Diesel Turbine
- 8" Diesel Turbine
- Riser

IRRIGATION MAP

JOINER FARM



● 8" Diesel Turbine ● 8" Electric Turbine ● Riser → Water Flow Direction ▲ Water Flow Direction





HILDEBRAND FARM



BOBO FARM



BALLENGER FARM



HILDEBRAND FARM

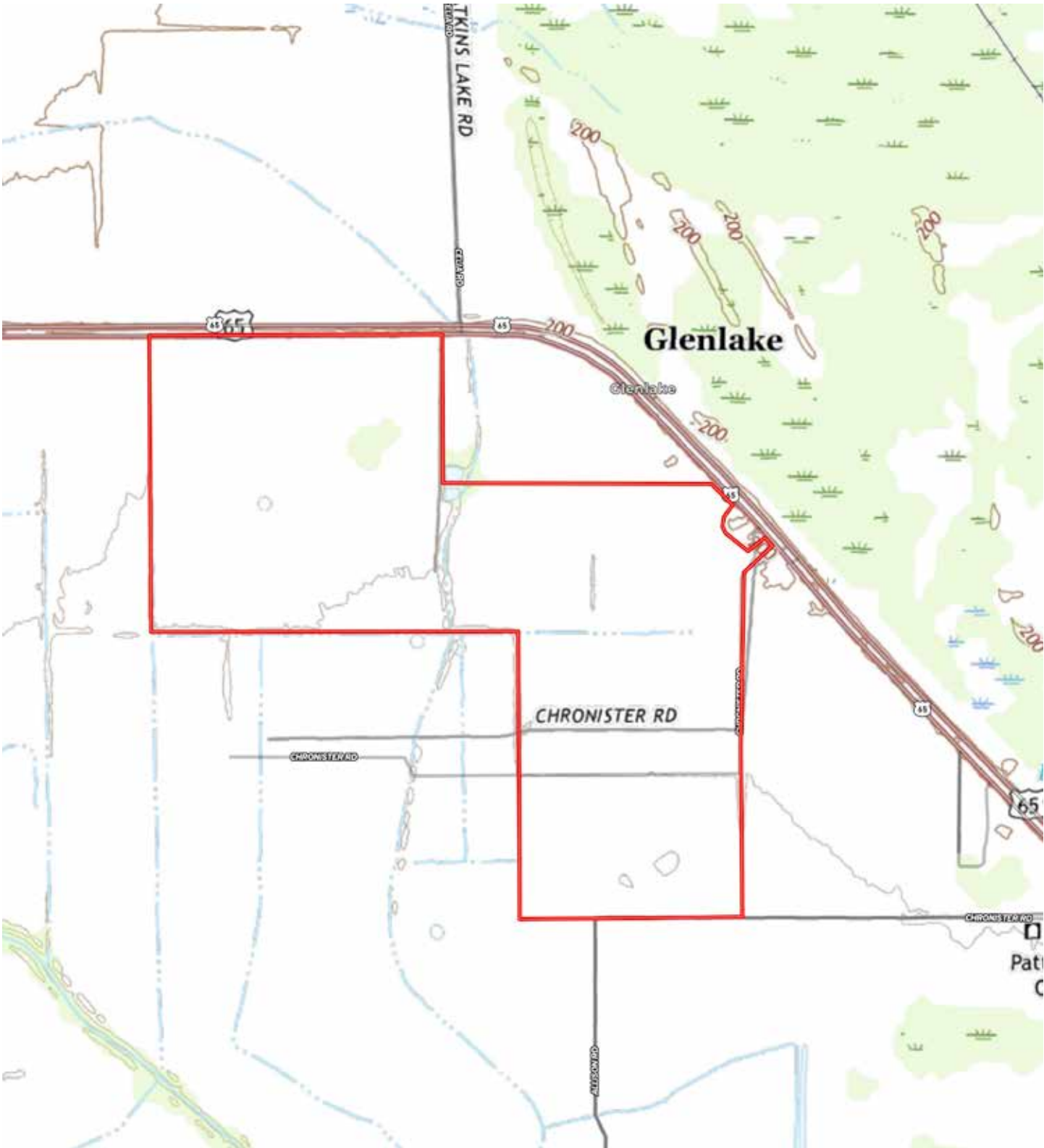
TOPOGRAPHY MAP

BALLENGER FARM



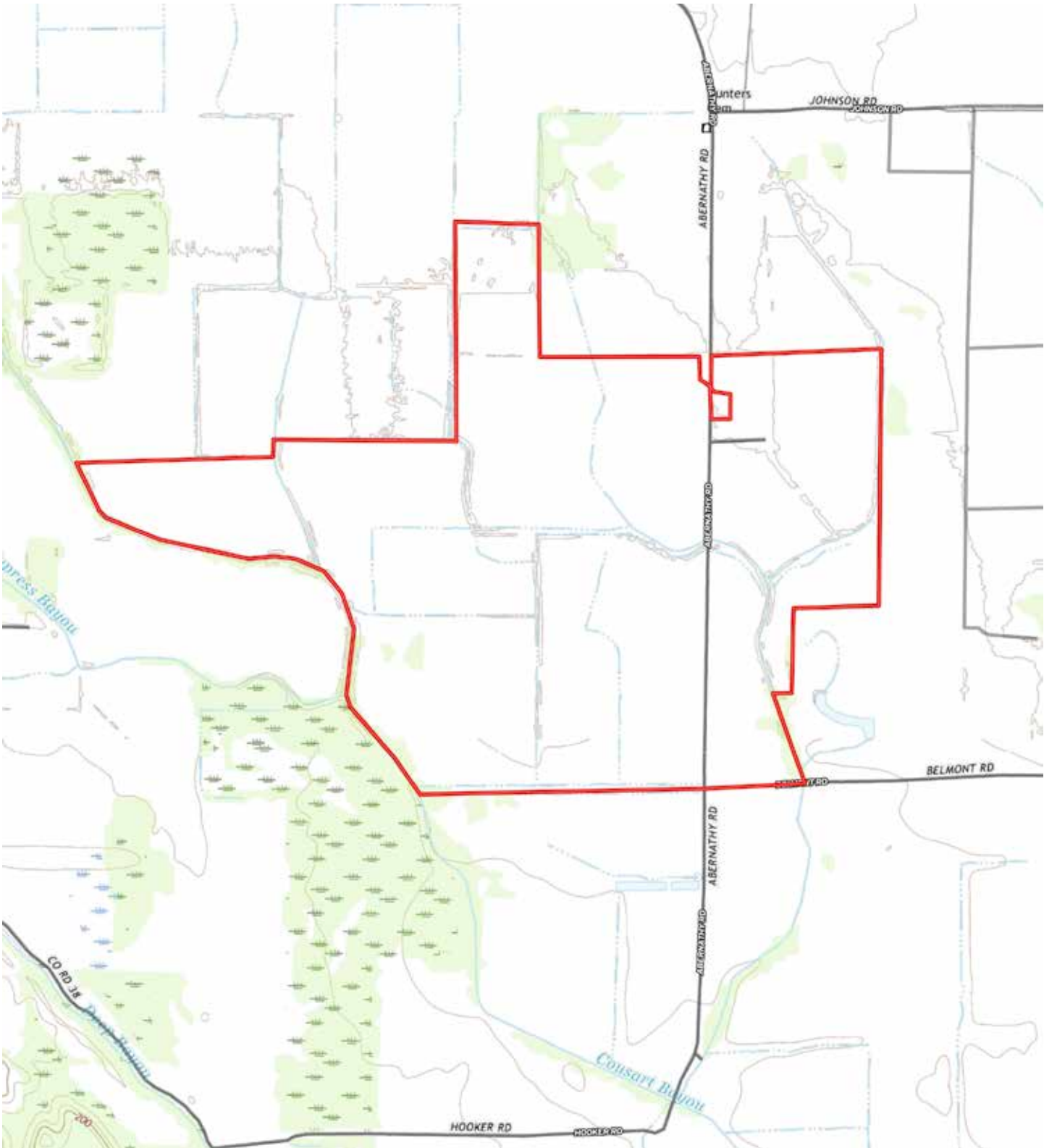
TOPOGRAPHY MAP

BOBO FARM



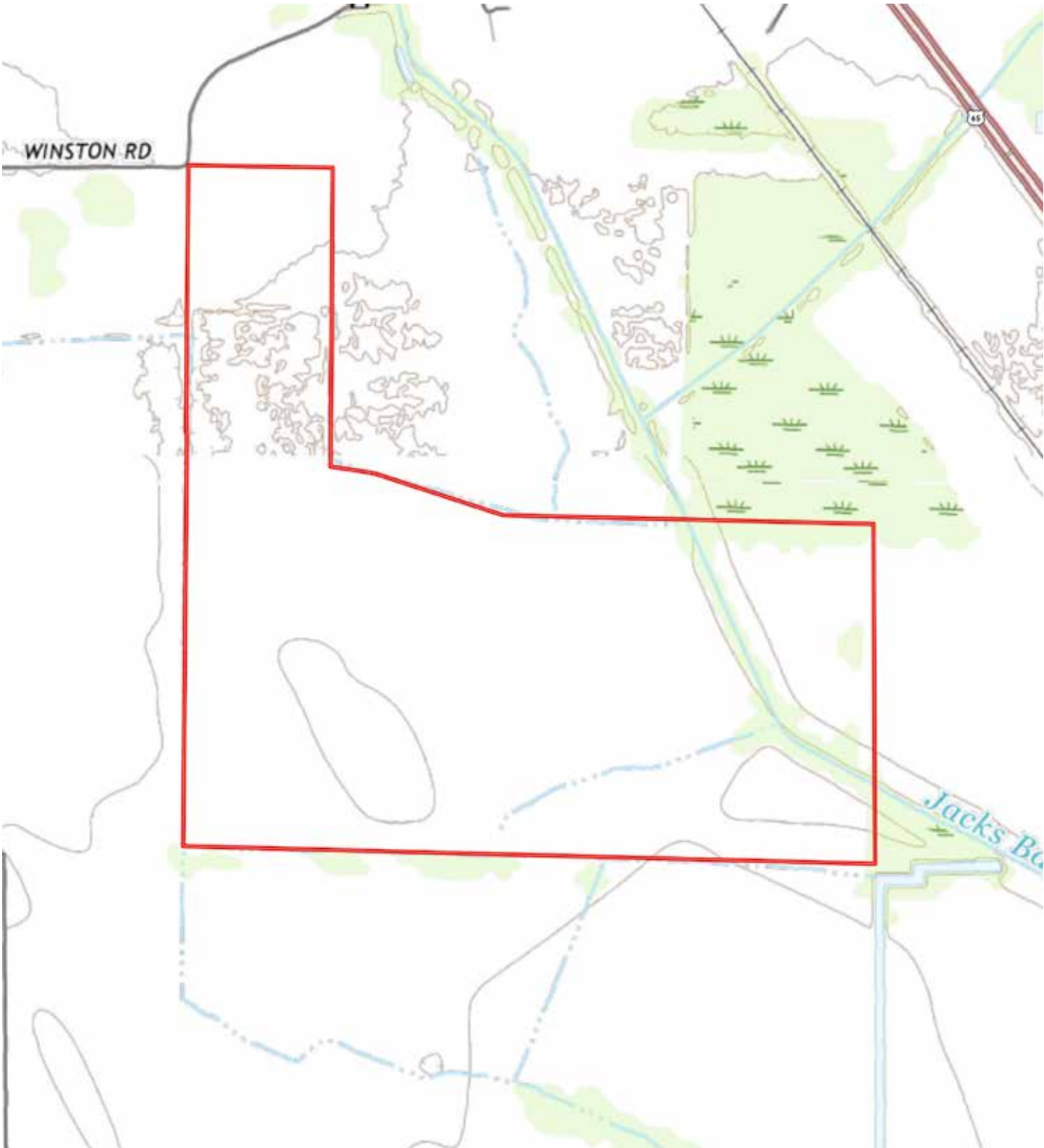
TOPOGRAPHY MAP

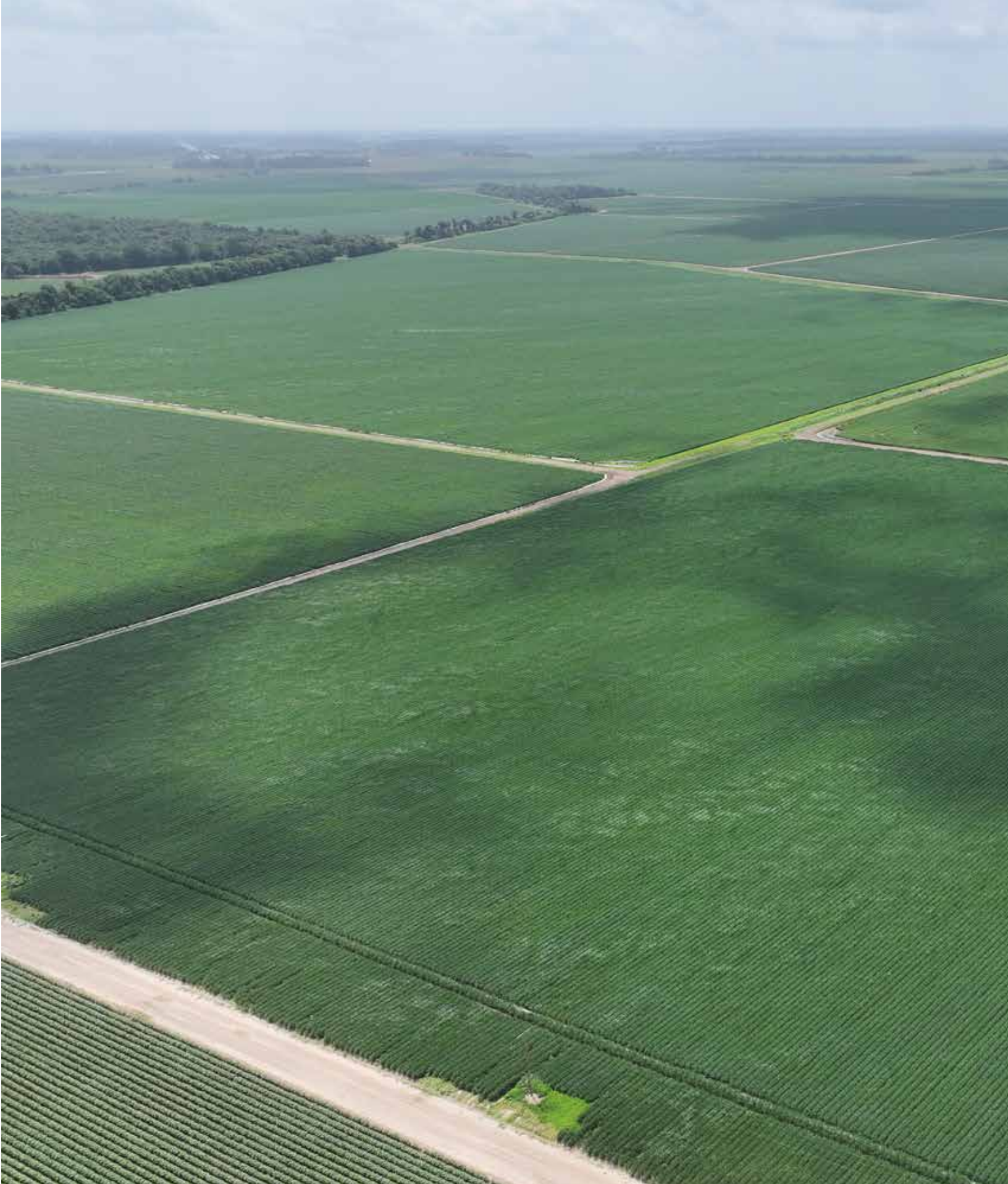
HILDEBRAND FARM



TOPOGRAPHY MAP

JOINER FARM







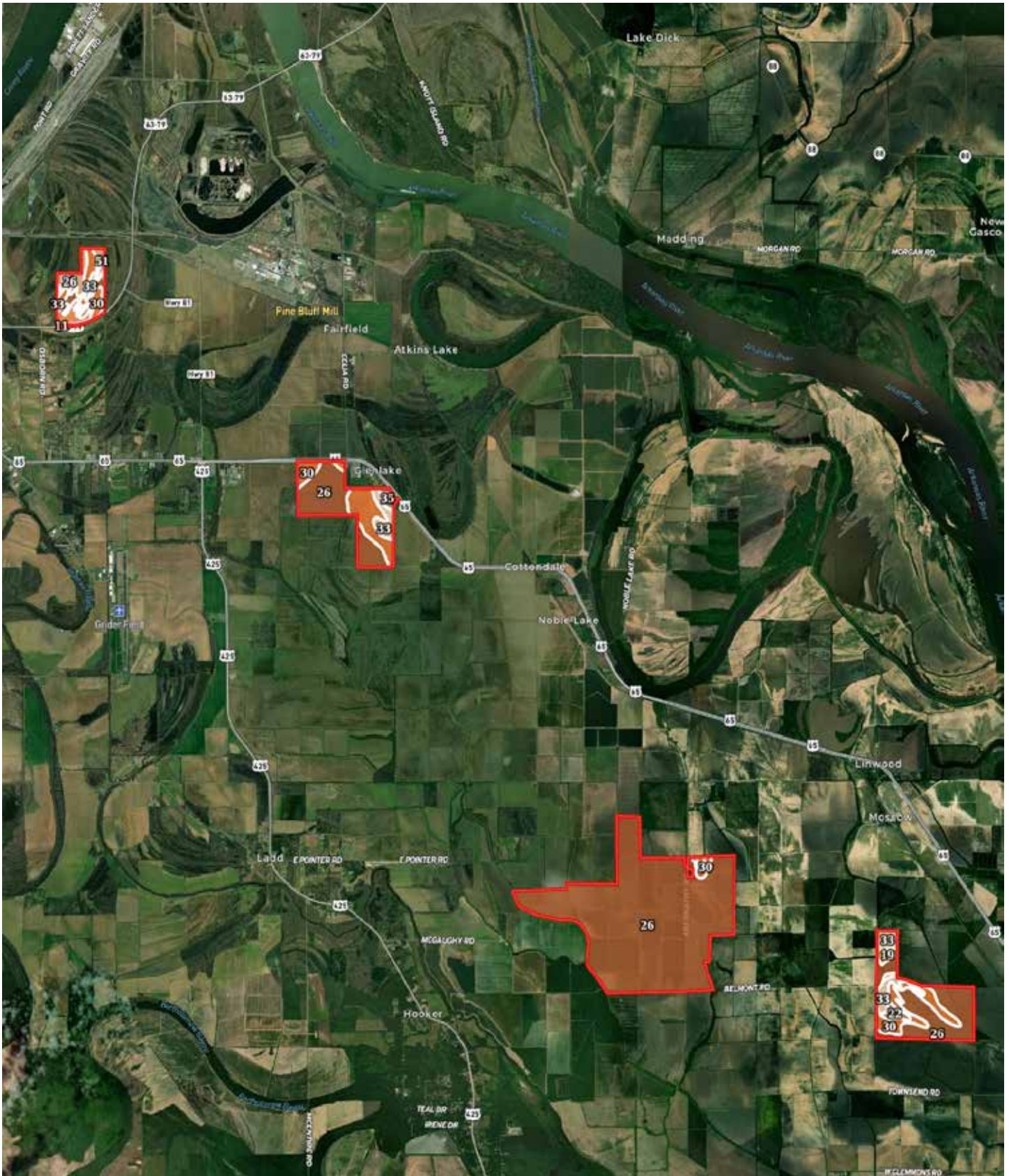
NOTABLE FEATURES

- All of the tillable acreage has been precision leveled.
- 1,647.68 +/- cropland acres leveled to a zero grade.
- Headquarters site that includes a shop, equipment shed, and 160,000 bushels of grain bin storage
- Excellent water, soils, and tenant pool





SOIL MAP



SOIL MAP KEY

SOIL CODE	SOIL DESCRIPTION	ACRES	%	CPI	NCCPI	CAP
26	Perry clay, 0 to 1 percent slopes	1714.25	76.83	0	48	3w
30	Portland clay, 0 to 1 percent slopes	286.35	12.83	0	56	3w
33	Rilla silt loam, 0 to 1 percent slopes	98.98	4.44	0	85	2e
51	Yorktown silty clay, 0 to 1 percent slopes, frequently flooded, frequently ponded	46.49	2.08	0	10	7w
34	Rilla silt loam, 1 to 3 percent slopes	32.69	1.47	0	86	2e
19	Hebert silt loam, 0 to 1 percent slopes	18.86	0.85	0	86	2w
22	McGehee silt loam, 0 to 1 percent slopes	16.09	0.72	0	72	2w
35	Roxana silt loam, 0 to 1 percent slopes	14.12	0.63	0	85	1
11	Crevasse loamy fine sand	3.32	0.15	0	36	4s
TOTALS		2231.15(*)	100%	-	51.14	3.0

(*) Total acres may differ in the second decimal compared to the sum of each acreage soil. This is due to a round error because we only show the acres of each soil with two decimal.

Capability Legend

Increased Limitations and Hazards

Decreased Adaptability and Freedom of Choice Users

Land, Capability

	1	2	3	4	5	6	7	8
'Wild Life'	•	•	•	•	•	•	•	•
Forestry	•	•	•	•	•	•	•	
Limited	•	•	•	•	•	•	•	
Moderate	•	•	•	•	•	•		
Intense	•	•	•	•	•			
Limited	•	•	•	•				
Moderate	•	•	•					
Intense	•	•						
Very Intense	•							

Grazing Cultivation

(c) climatic limitations (e) susceptibility to erosion

(s) soil limitations within the rooting zone (w) excess of water



BOBO FARM



BALLENGER FARM



BOBO FARM



BOBO FARM

RESOURCES & PRICE

Mineral Rights

All mineral rights owned by the Seller, if any, shall transfer to the Buyer.

Offering Price

\$16,159,382.00

To learn more about the Two Bayou Delta Farm or to schedule a property tour, contact Gar Lile or Gardner Lile of Lile Real Estate, Inc.

Gar Lile

501-920-7015 (m)

glile@lilerealestate.com

Gardner Lile

501-658-9275 (m)

gardner@lilerealestate.com

Real Estate Taxes Jefferson County

Farm	Parcel Number	Acres	Amount
Bobo	001-08614-000	239	\$4,116.11
Bobo	001-08619-000	120	\$1,661.18
Ballenger	001-08381-000	187.93	\$1,994.09
Joiner	001-11661-000	68	\$992.37
Joiner	001-11662-000	5.75	\$83.12
Joiner	001-11768-000	160	\$2,174.89
Joiner	001-11767-000	133.34	\$1,698.50
Joiner	001-11766-000	26.66	\$235.61
Hildebrand	001-12151-001	4.55	\$56.32
Hildebrand	001-12151-000	42.04	\$490.60
Hildebrand	001-12148-000	80	\$1,037.35
Hildebrand	001-11901-000	7.5	\$95.84
Hildebrand	001-12149-000	37	\$392.43
Hildebrand	001-11563-000	613.72	\$8,115.76
Hildebrand	001-11559-000	80	\$1,055.88
Hildebrand	001-11562-000	80	\$2,210.58
Hildebrand	001-11558-000	19.1	\$252.71
Hildebrand	001-11569-000	240	\$4,547.30
Hildebrand	001-11545-000	40	\$2,166.19
Hildebrand	001-11546-000	20	\$263.27
Hildebrand	001-11544-000	20	\$325.78
Total		2,224.59	\$33,965.88

The house and shop on the Bobo Farm are not included as well as the three houses on the Hildebrand. These improvements will be surveyed out and retained by the Seller.

FARM SERVICE AGENCY

BALLENGER FARM



United States
Department of
Agriculture

Jefferson County, Arkansas



Common Land Unit

- Non-Cropland; Cropland
- Tract Boundary

Wetland Determination Identifiers

- Restricted Use
- ▼ Limited Restrictions
- Exempt from Conservation
- Compliance Provisions

Imagery Year: 2023

2025 Program Year

Map Created December 06, 2024

Farm **3775**

Tract **7523**

Tract Cropland Total: 191.91 acres

United States Department of Agriculture (USDA) Farm Service Agency (FSA) maps are for FSA Program administration only. This map does not represent a legal survey or reflect actual ownership; rather it depicts the information provided directly from the producer and/or National Agricultural Imagery Program (NAIP) imagery. The producer accepts the data 'as is' and assumes all risks associated with its use. USDA-FSA assumes no responsibility for actual or consequential damage incurred as a result of any user's reliance on this data outside FSA Programs. Wetland identifiers do not represent the size, shape, or specific determination of the area. Refer to your original determination (CPA-026 and attached maps) for exact boundaries and determinations or contact USDA Natural Resources Conservation Service (NRCS).

FARM SERVICE AGENCY

BALLENGER FARM

ARKANSAS JEFFERSON Form: FSA-156EZ See Page 2 for non-discriminatory Statements.	 United States Department of Agriculture Farm Service Agency Abbreviated 156 Farm Record	FARM : 3775 Prepared : 4/13/26 10:10 AM CST Crop Year : 2026
---	--	---

Operator Name	: JP LAND COMPANY LLC
CRP Contract Number(s)	: None
Recon ID	: 05-069-2021-6
Transferred From	: None
ARCPLC G/WF Eligibility	: Eligible

Farm Land Data									
Farmland	Cropland	DCP Cropland	WBP	EWP	WRP	GRP	Sugarcane	Farm Status	Number Of Tracts
214.83	191.91	191.91	0.00	0.00	0.00	0.00	0.0	Active	1
State Conservation	Other Conservation	Effective DCP Cropland	Double Cropped		CRP	MPL	DCP Ag.Rel. Activity	SOD	
0.00	0.00	191.91	103.90		0.00	0.00	0.00	0.00	

Crop Election Choice		
ARC Individual	ARC County	Price Loss Coverage
None	CORN, SOYBN	WHEAT, RICE-LGR

DCP Crop Data				
Crop Name	Base Acres	CCC-505 CRP Reduction Acres	PLC Yield	HIP
Wheat	44.42	0.00	59	
Corn	27.03	0.00	157	0
Soybeans	117.47	0.00	35	100
Rice-Long Grain	102.36	0.00	5810	
TOTAL	291.28	0.00		

NOTES

Tract Number	: 7523
Description	: J/10
FSA Physical Location	: ARKANSAS/JEFFERSON
ANSI Physical Location	: ARKANSAS/JEFFERSON
BIA Unit Range Number	:
CRP Contract Number(s)	: None
HEL Status	: NHEL: No agricultural commodity planted on undetermined fields
Wetland Status	: Tract contains a wetland or farmed wetland
WL Violations	: None
Owners	: JP LAND COMPANY LLC
Other Producers	: M P PLANTING CO LLC, K P PLANTING CO LLC, PRICE FAMILY FARMING COMPANY
Recon ID	: None

FARM SERVICE AGENCY

BALLENGER FARM

ARKANSAS
JEFFERSON
Form: FSA-156EZ



United States Department of Agriculture
Farm Service Agency

Abbreviated 156 Farm Record

FARM : 3775
Prepared : 4/13/26 10:10 AM CST
Crop Year : 2026

Tract Land Data

Tract 7523 Continued ...

Farm Land	Cropland	DCP Cropland	WBP	EWP	WRP	GRP	Sugarcane
214.83	191.91	191.91	0.00	0.00	0.00	0.00	0.0
State Conservation	Other Conservation	Effective DCP Cropland	Double Cropped	CRP	MPL	DCP Ag. Rel Activity	SOD
0.00	0.00	191.91	103.90	0.00	0.00	0.00	0.00

DCP Crop Data

Crop Name	Base Acres	CCC-505 CRP Reduction Acres	PLC Yield
Wheat	44.42	0.00	59
Corn	27.03	0.00	157
Soybeans	117.47	0.00	35
Rice-Long Grain	102.36	0.00	5810
TOTAL	291.28	0.00	

NOTES

In accordance with Federal civil rights law and U.S. Department of Agriculture (USDA) civil rights regulations and policies, the USDA, its Agencies, offices, and employees, and institutions participating in or administering USDA programs are prohibited from discriminating based on race, color, national origin, religion, sex, disability, age, marital status, family/parental status, income derived from a public assistance program, political beliefs, or reprisal or retaliation for prior civil rights activity, in any program or activity conducted or funded by USDA (not all bases apply to all programs). Remedies and complaint filing deadlines vary by program or incident.

Persons with disabilities who require alternative means of communication for program information (e.g., Braille, large print, audiotape, American Sign Language, etc.) should contact the State or Local Agency that administers the program or contact USDA through the Telecommunications Relay Service at 711 (voice and TTY). Additionally, program information may be made available in languages other than English.

To file a program discrimination complaint, complete the USDA Program Discrimination Complaint Form, AD-3027, found online at [How to File a Program Discrimination Complaint](#) and at any USDA office or write a letter addressed to USDA and provide in the letter all of the information requested in the form. To request a copy of the complaint form, call (866) 632-9992. Submit your completed form or letter to USDA by: (1) Mail: U.S. Department of Agriculture Office of the Assistant Secretary for Civil Rights, 1400 Independence Avenue, SW Washington, D.C. 20250-9410; (2) Fax: (202) 690-7442; or (3) Email: program.intake@usda.gov. USDA is an equal opportunity provider, employer, and lender.

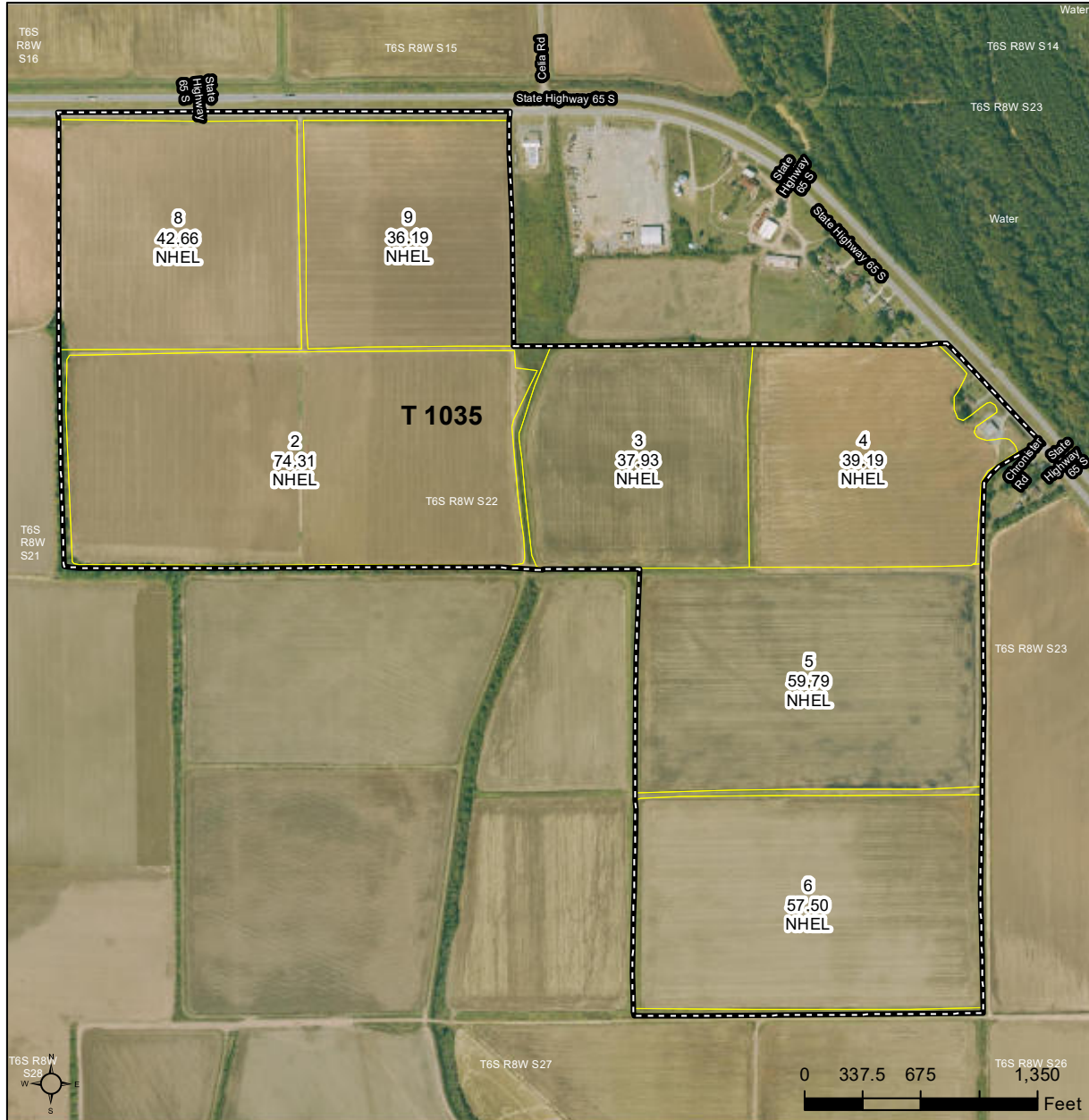
FARM SERVICE AGENCY

BOBO FARM



United States
Department of
Agriculture

Jefferson County, Arkansas



Common Land Unit

- Non-Cropland; Cropland
- Tract Boundary

Wetland Determination Identifiers

- Restricted Use
- ▼ Limited Restrictions
- Exempt from Conservation
- Compliance Provisions

Imagery Year: 2023

2025 Program Year

Map Created December 06, 2024

Farm 575
Tract 1035

Tract Cropland Total: 347.57 acres

United States Department of Agriculture (USDA) Farm Service Agency (FSA) maps are for FSA Program administration only. This map does not represent a legal survey or reflect actual ownership; rather it depicts the information provided directly from the producer and/or National Agricultural Imagery Program (NAIP) imagery. The producer accepts the data 'as is' and assumes all risks associated with its use. USDA-FSA assumes no responsibility for actual or consequential damage incurred as a result of any user's reliance on this data outside FSA Programs. Wetland identifiers do not represent the size, shape, or specific determination of the area. Refer to your original determination (CPA-026 and attached maps) for exact boundaries and determinations or contact USDA Natural Resources Conservation Service (NRCS).

FARM SERVICE AGENCY

BOBO FARM

ARKANSAS JEFFERSON Form: FSA-156EZ See Page 2 for non-discriminatory Statements.	 United States Department of Agriculture Farm Service Agency Abbreviated 156 Farm Record	FARM : 575 Prepared : 5/7/26 2:27 PM CST Crop Year : 2026
---	--	--

Operator Name : K P PLANTING CO LLC
CRP Contract Number(s) : None
Recon ID : None
Transferred From : None
ARCPLC G/WF Eligibility : Eligible

Farm Land Data									
Farmland	Cropland	DCP Cropland	WBP	EWP	WRP	GRP	Sugarcane	Farm Status	Number Of Tracts
363.17	347.57	347.57	0.00	0.00	0.00	0.00	0.0	Active	1
State Conservation	Other Conservation	Effective DCP Cropland	Double Cropped		CRP	MPL	DCP Ag.Rel. Activity	SOD	
0.00	0.00	347.57	25.90		0.00	0.00	0.00	0.00	

Crop Election Choice		
ARC Individual	ARC County	Price Loss Coverage
None	SOYBN	WHEAT, SORGH, RICE-LGR

DCP Crop Data				
Crop Name	Base Acres	CCC-505 CRP Reduction Acres	PLC Yield	HIP
Wheat	30.40	0.00	41	
Grain Sorghum	33.50	0.00	48	
Soybeans	124.40	0.00	50	100
Rice-Long Grain	175.40	0.00	7257	
TOTAL	363.70	0.00		

NOTES

Tract Number : 1035
Description : L/11
FSA Physical Location : ARKANSAS/JEFFERSON
ANSI Physical Location : ARKANSAS/JEFFERSON
BIA Unit Range Number :
CRP Contract Number(s) : None
HEL Status : NHEL: No agricultural commodity planted on undetermined fields
Wetland Status : Wetland determinations not complete
WL Violations : None
Owners : JP LAND COMPANY LLC
Other Producers : A P PLANTING CO LLC
Recon ID : None

FARM SERVICE AGENCY

BOBO FARM

ARKANSAS JEFFERSON Form: FSA-156EZ	 United States Department of Agriculture Farm Service Agency Abbreviated 156 Farm Record	FARM : 575 Prepared : 5/7/26 2:27 PM CST Crop Year : 2026
--	--	--

Tract Land Data

Tract 1035 Continued ...

Farm Land	Cropland	DCP Cropland	WBP	EWP	WRP	GRP	Sugarcane
363.17	347.57	347.57	0.00	0.00	0.00	0.00	0.0
State Conservation	Other Conservation	Effective DCP Cropland	Double Cropped	CRP	MPL	DCP Ag. Rel Activity	SOD
0.00	0.00	347.57	25.90	0.00	0.00	0.00	0.00

DCP Crop Data

Crop Name	Base Acres	CCC-505 CRP Reduction Acres	PLC Yield
Wheat	30.40	0.00	41
Grain Sorghum	33.50	0.00	48
Soybeans	124.40	0.00	50
Rice-Long Grain	175.40	0.00	7257
TOTAL	363.70	0.00	

NOTES

In accordance with Federal civil rights law and U.S. Department of Agriculture (USDA) civil rights regulations and policies, the USDA, its Agencies, offices, and employees, and institutions participating in or administering USDA programs are prohibited from discriminating based on race, color, national origin, religion, sex, disability, age, marital status, family/parental status, income derived from a public assistance program, political beliefs, or reprisal or retaliation for prior civil rights activity, in any program or activity conducted or funded by USDA (not all bases apply to all programs). Remedies and complaint filing deadlines vary by program or incident.

Persons with disabilities who require alternative means of communication for program information (e.g., Braille, large print, audiotape, American Sign Language, etc.) should contact the State or Local Agency that administers the program or contact USDA through the Telecommunications Relay Service at 711 (voice and TTY). Additionally, program information may be made available in languages other than English.

To file a program discrimination complaint, complete the USDA Program Discrimination Complaint Form, AD-3027, found online at [How to File a Program Discrimination Complaint](#) and at any USDA office or write a letter addressed to USDA and provide in the letter all of the information requested in the form. To request a copy of the complaint form, call (866) 632-9992. Submit your completed form or letter to USDA by: (1) Mail: U.S. Department of Agriculture Office of the Assistant Secretary for Civil Rights, 1400 Independence Avenue, SW Washington, D.C. 20250-9410; (2) Fax: (202) 690-7442; or (3) Email: program.intake@usda.gov. USDA is an equal opportunity provider, employer, and lender.

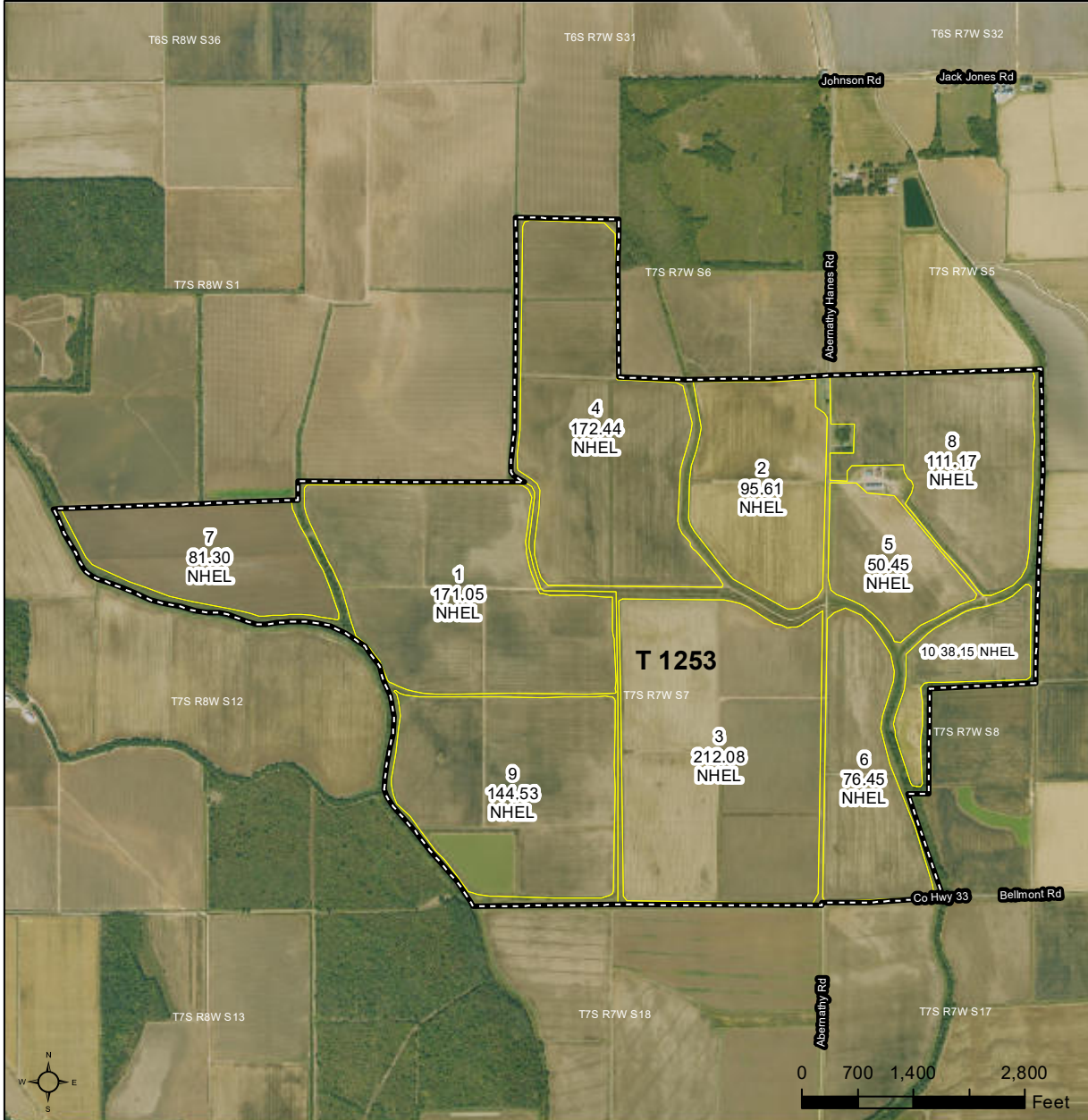
FARM SERVICE AGENCY

HILDEBRAND FARM



United States
Department of
Agriculture

Jefferson County, Arkansas



Common Land Unit

- Non-Cropland; Cropland
- Tract Boundary

Wetland Determination Identifiers

- Restricted Use
- ▼ Limited Restrictions
- Exempt from Conservation
- Compliance Provisions

Imagery Year: 2023

2025 Program Year

Map Created December 06, 2024

Farm 509
Tract 1253

Tract Cropland Total: 1153.23 acres

United States Department of Agriculture (USDA) Farm Service Agency (FSA) maps are for FSA Program administration only. This map does not represent a legal survey or reflect actual ownership; rather it depicts the information provided directly from the producer and/or National Agricultural Imagery Program (NAIP) imagery. The producer accepts the data 'as is' and assumes all risks associated with its use. USDA-FSA assumes no responsibility for actual or consequential damage incurred as a result of any user's reliance on this data outside FSA Programs. Wetland identifiers do not represent the size, shape, or specific determination of the area. Refer to your original determination (CPA-026 and attached maps) for exact boundaries and determinations or contact USDA Natural Resources Conservation Service (NRCS).

FARM SERVICE AGENCY

HILDEBRAND FARM

ARKANSAS JEFFERSON Form: FSA-156EZ See Page 2 for non-discriminatory Statements.	 United States Department of Agriculture Farm Service Agency Abbreviated 156 Farm Record	FARM : 509 Prepared : 5/7/26 2:26 PM CST Crop Year : 2026
---	--	--

Operator Name : JP LAND COMPANY LLC
CRP Contract Number(s) : None
Recon ID : None
Transferred From : None
ARCPLC G/WF Eligibility : Eligible

Farm Land Data									
Farmland	Cropland	DCP Cropland	WBP	EWP	WRP	GRP	Sugarcane	Farm Status	Number Of Tracts
1,283.87	1,153.23	1,153.23	0.00	0.00	0.00	0.00	0.0	Active	1
State Conservation	Other Conservation	Effective DCP Cropland	Double Cropped		CRP	MPL	DCP Ag.Rel. Activity	SOD	
0.00	0.00	1,153.23	0.00		0.00	0.00	0.00	0.00	

Crop Election Choice		
ARC Individual	ARC County	Price Loss Coverage
None	SOYBN	WHEAT, OATS, RICE-LGR, RICE-MGR

DCP Crop Data				
Crop Name	Base Acres	CCC-505 CRP Reduction Acres	PLC Yield	HIP
Wheat	19.71	0.00	39	
Oats	16.76	0.00	84	
Soybeans	152.18	0.00	41	100
Rice-Long Grain	788.67	0.00	5976	
Rice-Medium Grain	8.28	0.00	5462	
TOTAL	985.60	0.00		

NOTES

Tract Number : 1253
Description : N/13 M/13
FSA Physical Location : ARKANSAS/JEFFERSON
ANSI Physical Location : ARKANSAS/JEFFERSON
BIA Unit Range Number :
CRP Contract Number(s) : None
HEL Status : NHEL: No agricultural commodity planted on undetermined fields
Wetland Status : Wetland determinations not complete
WL Violations : None
Owners : JP LAND COMPANY LLC
Other Producers : PRICE FAMILY FARMING COMPANY
Recon ID : None

FARM SERVICE AGENCY

HILDEBRAND FARM

ARKANSAS
JEFFERSON
Form: FSA-156EZ



United States Department of Agriculture
Farm Service Agency

Abbreviated 156 Farm Record

FARM : 509
Prepared : 5/7/26 2:26 PM CST
Crop Year : 2026

Tract Land Data

Tract 1253 Continued ...

Farm Land	Cropland	DCP Cropland	WBP	EWP	WRP	GRP	Sugarcane
1,283.87	1,153.23	1,153.23	0.00	0.00	0.00	0.00	0.0
State Conservation	Other Conservation	Effective DCP Cropland	Double Cropped	CRP	MPL	DCP Ag. Rel Activity	SOD
0.00	0.00	1,153.23	0.00	0.00	0.00	0.00	0.00

DCP Crop Data

Crop Name	Base Acres	CCC-505 CRP Reduction Acres	PLC Yield
Wheat	19.71	0.00	39
Oats	16.76	0.00	84
Soybeans	152.18	0.00	41
Rice-Long Grain	788.67	0.00	5976
Rice-Medium Grain	8.28	0.00	5462
TOTAL	985.60	0.00	

NOTES

In accordance with Federal civil rights law and U.S. Department of Agriculture (USDA) civil rights regulations and policies, the USDA, its Agencies, offices, and employees, and institutions participating in or administering USDA programs are prohibited from discriminating based on race, color, national origin, religion, sex, disability, age, marital status, family/parental status, income derived from a public assistance program, political beliefs, or reprisal or retaliation for prior civil rights activity, in any program or activity conducted or funded by USDA (not all bases apply to all programs). Remedies and complaint filing deadlines vary by program or incident.

Persons with disabilities who require alternative means of communication for program information (e.g., Braille, large print, audiotape, American Sign Language, etc.) should contact the State or Local Agency that administers the program or contact USDA through the Telecommunications Relay Service at 711 (voice and TTY). Additionally, program information may be made available in languages other than English.

To file a program discrimination complaint, complete the USDA Program Discrimination Complaint Form, AD-3027, found online at [How to File a Program Discrimination Complaint](#) and at any USDA office or write a letter addressed to USDA and provide in the letter all of the information requested in the form. To request a copy of the complaint form, call (866) 632-9992. Submit your completed form or letter to USDA by: (1) Mail: U.S. Department of Agriculture Office of the Assistant Secretary for Civil Rights, 1400 Independence Avenue, SW Washington, D.C. 20250-9410; (2) Fax: (202) 690-7442; or (3) Email: program.intake@usda.gov. USDA is an equal opportunity provider, employer, and lender.

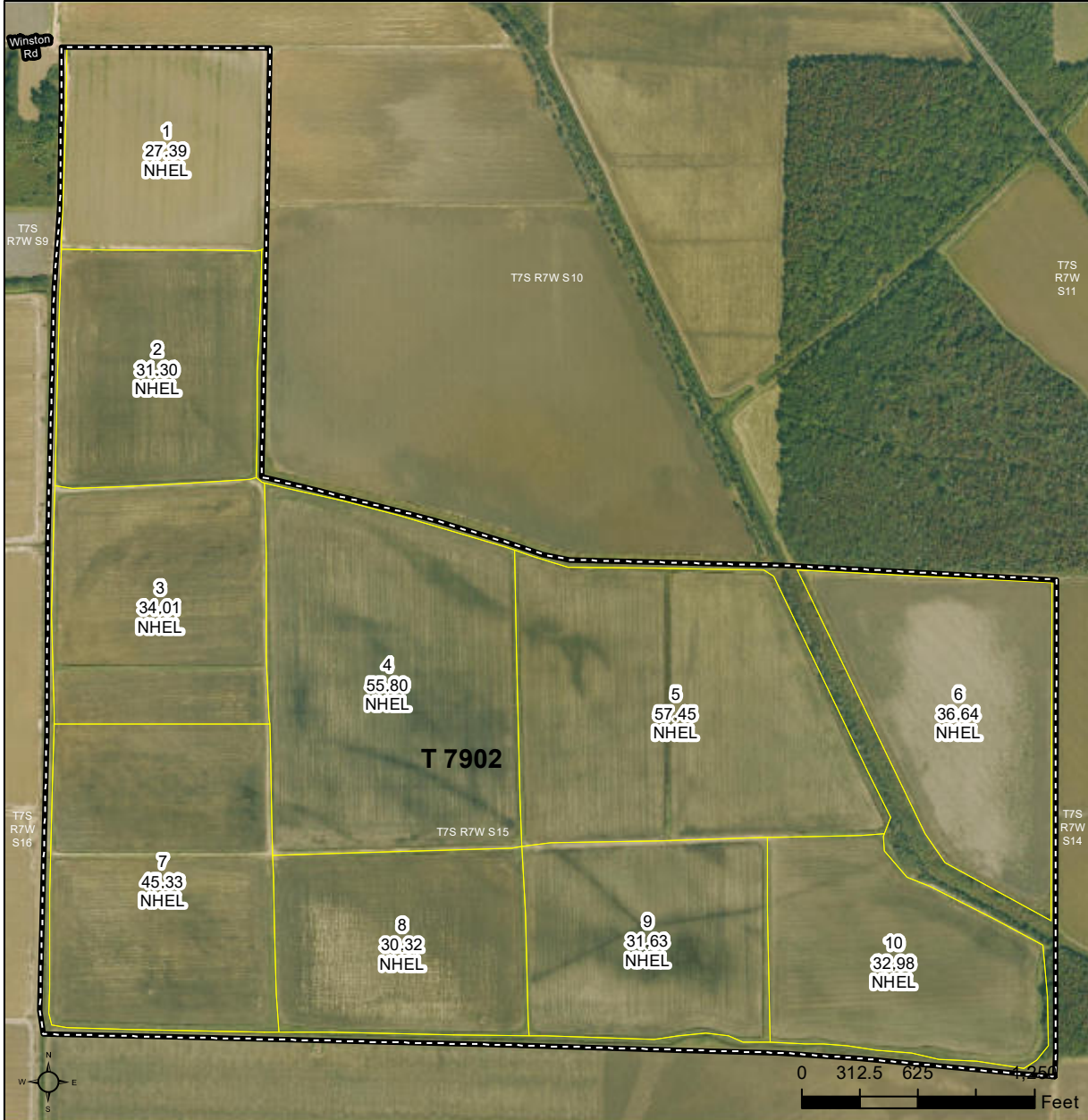
FARM SERVICE AGENCY

JOINER FARM



United States
Department of
Agriculture

Jefferson County, Arkansas



Common Land Unit

- Non-Cropland; Cropland
- Tract Boundary

Wetland Determination Identifiers

- Restricted Use
- ▼ Limited Restrictions
- Exempt from Conservation
- Compliance Provisions

Imagery Year: 2023

2025 Program Year

Map Created December 06, 2024

Farm 4096

Tract 7902

Tract Cropland Total: 382.85 acres

United States Department of Agriculture (USDA) Farm Service Agency (FSA) maps are for FSA Program administration only. This map does not represent a legal survey or reflect actual ownership; rather it depicts the information provided directly from the producer and/or National Agricultural Imagery Program (NAIP) imagery. The producer accepts the data 'as is' and assumes all risks associated with its use. USDA-FSA assumes no responsibility for actual or consequential damage incurred as a result of any user's reliance on this data outside FSA Programs. Wetland identifiers do not represent the size, shape, or specific determination of the area. Refer to your original determination (CPA-026 and attached maps) for exact boundaries and determinations or contact USDA Natural Resources Conservation Service (NRCS).

FARM SERVICE AGENCY

JOINER FARM

ARKANSAS JEFFERSON Form: FSA-156EZ See Page 2 for non-discriminatory Statements.	 United States Department of Agriculture Farm Service Agency Abbreviated 156 Farm Record	FARM : 4096 Prepared : 5/7/26 2:28 PM CST Crop Year : 2026
---	--	---

Operator Name	: PRICE FAMILY FARMING COMPANY
CRP Contract Number(s)	: None
Recon ID	: 05-069-2024-32
Transferred From	: None
ARCPLC G/WF Eligibility	: Eligible

Farm Land Data									
Farmland	Cropland	DCP Cropland	WBP	EWP	WRP	GRP	Sugarcane	Farm Status	Number Of Tracts
406.41	382.85	382.85	0.00	0.00	0.00	0.00	0.0	Active	1
State Conservation	Other Conservation	Effective DCP Cropland	Double Cropped		CRP	MPL	DCP Ag.Rel. Activity	SOD	
0.00	0.00	382.85	7.20		0.00	0.00	0.00	0.00	

Crop Election Choice		
ARC Individual	ARC County	Price Loss Coverage
None	CORN, SOYBN	WHEAT, OATS, SUP, RICE-LGR

DCP Crop Data				
Crop Name	Base Acres	CCC-505 CRP Reduction Acres	PLC Yield	HIP
Wheat	23.29	0.00	34	
Oats	4.45	0.00	56	
Corn	102.68	0.00	184	100
Soybeans	87.53	0.00	56	100
Seed Cotton	22.72	0.00	1344	
Unassigned Generic Base	5.68	0.00	0	
Rice-Long Grain	135.01	0.00	8146	
TOTAL	381.36	0.00		

NOTES

Tract Number	: 7902
Description	: O/13
FSA Physical Location	: ARKANSAS/JEFFERSON
ANSI Physical Location	: ARKANSAS/JEFFERSON
BIA Unit Range Number	:
CRP Contract Number(s)	: None
HEL Status	: NHEL: No agricultural commodity planted on undetermined fields
Wetland Status	: Wetland determinations not complete
WL Violations	: None
Owners	: JP LAND COMPANY LLC
Other Producers	: K P PLANTING CO LLC, M P PLANTING CO LLC, A P PLANTING CO LLC
Recon ID	: None

FARM SERVICE AGENCY

JOINER FARM

ARKANSAS
JEFFERSON
Form: FSA-156EZ



United States Department of Agriculture
Farm Service Agency

Abbreviated 156 Farm Record

FARM : 4096
Prepared : 5/7/26 2:28 PM CST
Crop Year : 2026

Tract Land Data

Tract 7902 Continued ...

Farm Land	Cropland	DCP Cropland	WBP	EWP	WRP	GRP	Sugarcane
406.41	382.85	382.85	0.00	0.00	0.00	0.00	0.0
State Conservation	Other Conservation	Effective DCP Cropland	Double Cropped	CRP	MPL	DCP Ag. Rel Activity	SOD
0.00	0.00	382.85	7.20	0.00	0.00	0.00	0.00

DCP Crop Data

Crop Name	Base Acres	CCC-505 CRP Reduction Acres	PLC Yield
Wheat	23.29	0.00	34
Oats	4.45	0.00	56
Corn	102.68	0.00	184
Soybeans	87.53	0.00	56
Seed Cotton	22.72	0.00	1344
Unassigned Generic Base	5.68	0.00	0
Rice-Long Grain	135.01	0.00	8146
TOTAL	381.36	0.00	

NOTES

In accordance with Federal civil rights law and U.S. Department of Agriculture (USDA) civil rights regulations and policies, the USDA, its Agencies, offices, and employees, and institutions participating in or administering USDA programs are prohibited from discriminating based on race, color, national origin, religion, sex, disability, age, marital status, family/parental status, income derived from a public assistance program, political beliefs, or reprisal or retaliation for prior civil rights activity, in any program or activity conducted or funded by USDA (not all bases apply to all programs). Remedies and complaint filing deadlines vary by program or incident.

Persons with disabilities who require alternative means of communication for program information (e.g., Braille, large print, audiotape, American Sign Language, etc.) should contact the State or Local Agency that administers the program or contact USDA through the Telecommunications Relay Service at 711 (voice and TTY). Additionally, program information may be made available in languages other than English.

To file a program discrimination complaint, complete the USDA Program Discrimination Complaint Form, AD-3027, found online at [How to File a Program Discrimination Complaint](#) and at any USDA office or write a letter addressed to USDA and provide in the letter all of the information requested in the form. To request a copy of the complaint form, call (866) 632-9992. Submit your completed form or letter to USDA by: (1) Mail: U.S. Department of Agriculture, Office of the Assistant Secretary for Civil Rights, 1400 Independence Avenue, SW Washington, D.C. 20250-9410; (2) Fax: (202) 690-7442; or (3) Email: program.intake@usda.gov. USDA is an equal opportunity provider, employer, and lender.



DISCLOSURE STATEMENT: Lile Real Estate, Inc. is the listing agency for the owner of the property described within this offering brochure. A representative of Lile Real Estate, Inc. must be present to conduct a showing.

The management of Lile Real Estate, Inc. respectfully requests that interested parties contact us in advance to schedule a proper showing and do not attempt to tour or trespass on the property on their own. Thank you for your cooperation.

Some images shown within this offering brochure are used for representative purposes and may not have been taken on location at the subject property. This offering is subject to errors, omissions, change or withdrawal without notice. All information provided herein is intended as a general guideline and has been provided by sources deemed reliable, but the accuracy of which we cannot guarantee.

CONNECTING LAND BUYERS AND SELLERS SINCE 1993.

Lile Real Estate is a dedicated team of professionals with an in-depth understanding and a network of qualified buyers within the Mid-South and across the country. For over 30 years, we've connected land sellers with buyers in Arkansas, Louisiana, Mississippi, and Tennessee.



For more information or to
schedule a property tour, contact:

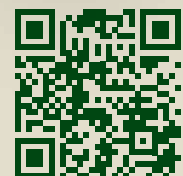
GAR LILE

501.920.7015 (m)
glile@lilerealestate.com

GARDNER LILE

501.658.9275 (m)
gardner@lilerealestate.com

Scan for
more info





1 Allied Drive, Suite 2220
Little Rock, Arkansas 72202

WWW.LILEREALSTATE.COM



501.374.3411 (Office)
501.421.0031 (Fax)

INFO@LILEREALSTATE.COM