



WABBASEKA FARM

An Agricultural and Recreational Investment Opportunity

293± Total Acres | \$2,022,420.00

Jefferson County, Arkansas



AGRICULTURE | RECREATION | TIMBERLAND

Traditional Brokerage + Sealed Bids + Consulting

LICENSED IN ARKANSAS, LOUISIANA, MISSISSIPPI, AND TENNESSEE



WABBASEKA FARM

QUICK FACTS

Acreage

293± total acres

- 273± acres in cropland
- 20± acres in roads, ditches, and woods

Location

Wabbaseka, Arkansas

Access

South Farm: Wilson Road

North Farm: Mulberry Grove Road

Crop Rotation

Rice and soybeans

Irrigation

All tillable acreage is irrigated
See the irrigation map in this brochure for additional details.

Recreation

Waterfowl hunting

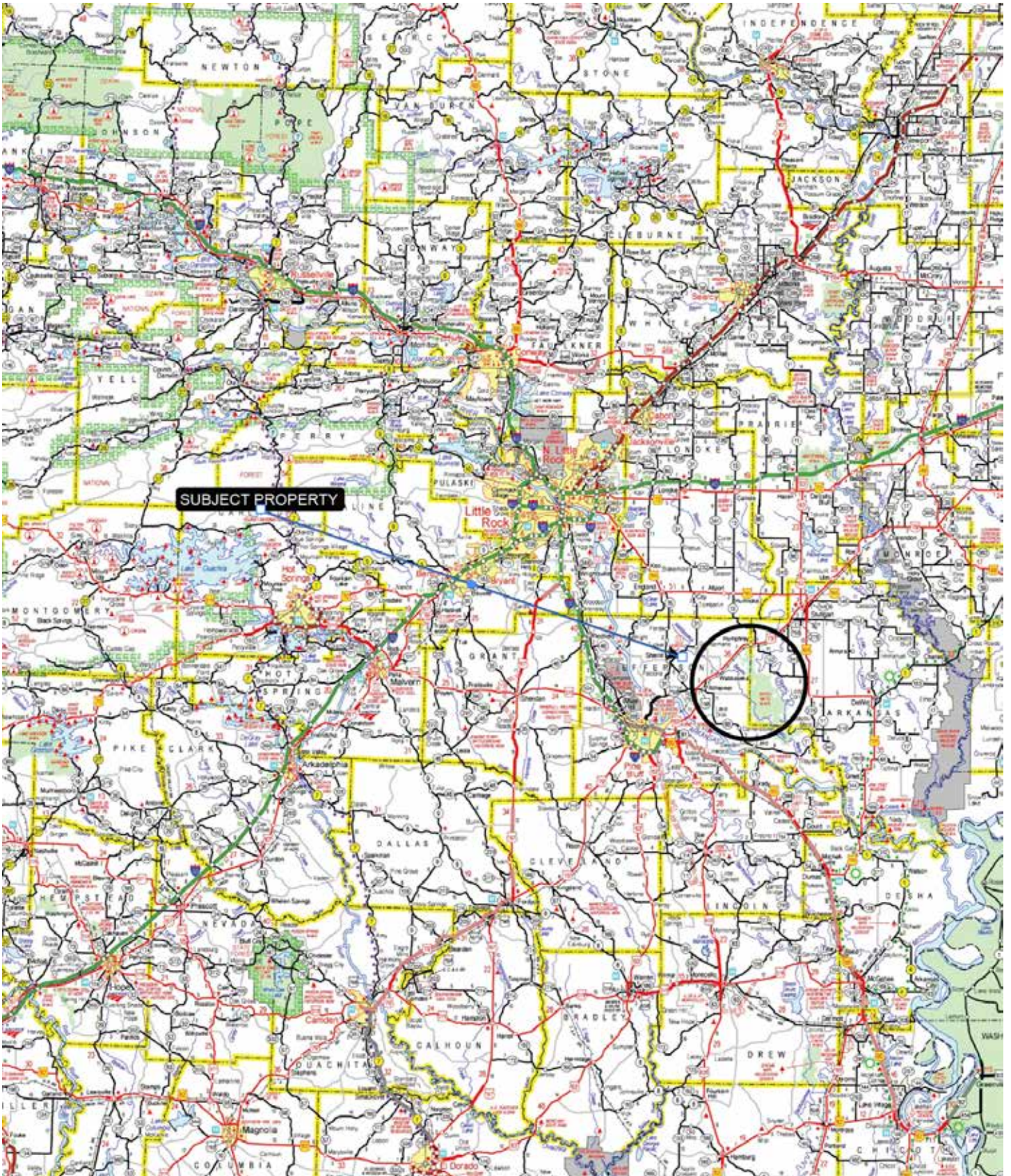
Offering Price

\$2,022,420.00





VICINITY MAP



PROPERTY DESCRIPTION

WABBASEKA FARM

Wabaseka Farm consists of approximately 293± acres in two tracts located in Jefferson County, Arkansas, just south of the town of Wabaseka. The property includes the North Farm (200± acres) and the South Farm (93± acres).

According to the Farm Service Agency, the North Farm contains 185.8± cropland acres, while the South Farm includes 87.5± cropland acres. Both farms are highly improved, with all cropland precision leveled and fully irrigated, supporting efficient row-crop production.

The North Farm is all irrigated by two electric turbine wells and a network of underground pipe. All three fields on the North Farm have been precision leveled with fall, improving irrigation efficiency and drainage.

The South Farm consists of three fields that have been precision leveled to zero grade and are irrigated by an 8-inch electric submersible well.

Both farms have a strong rice production history, with soybeans rotated into the operation to maintain soil health and support long-term rice productivity.

Access to the property is convenient, with the South Farm located along Wilson Road and the North





Farm accessed via Mulberry Grove Road.

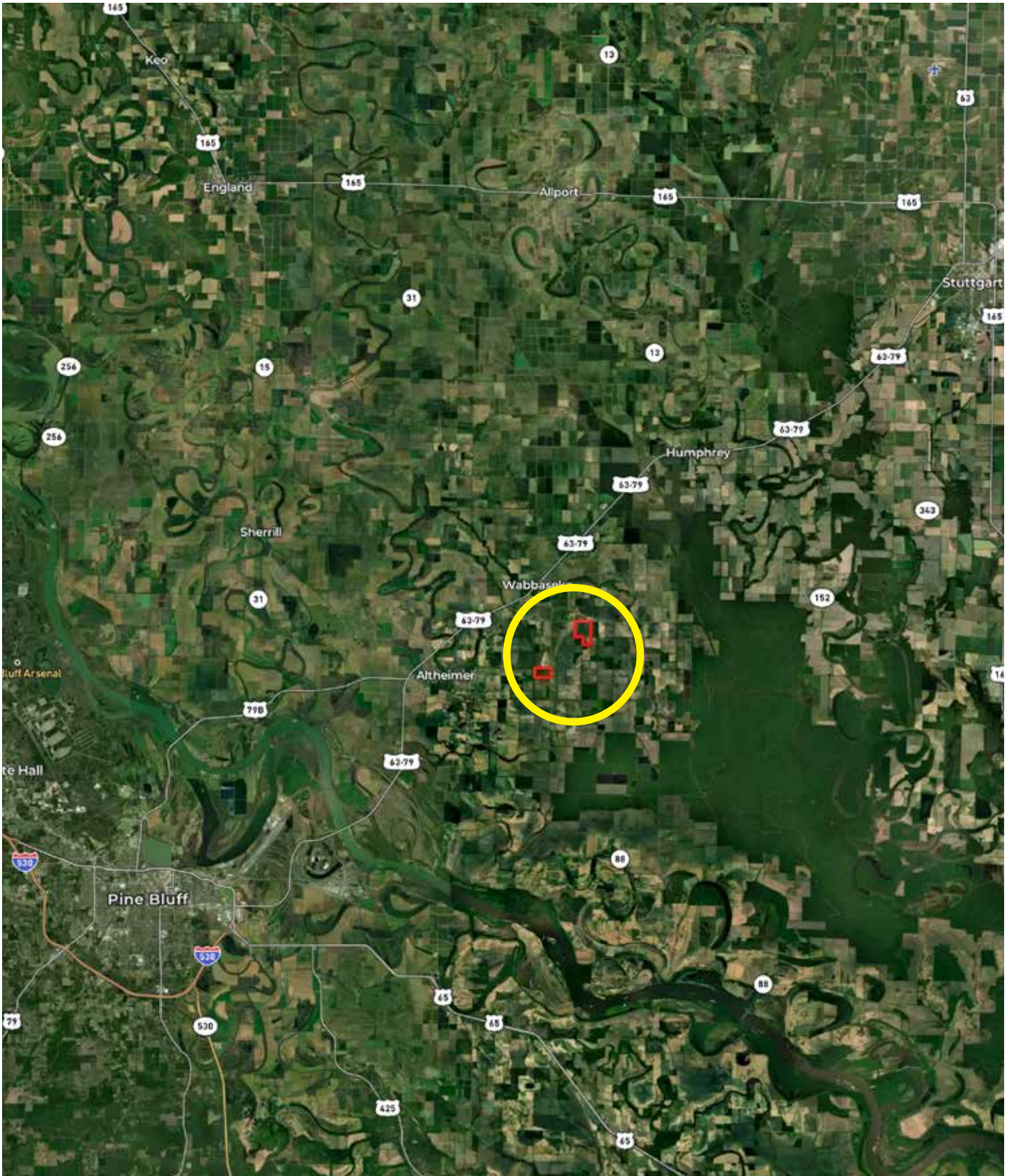
In addition to its agricultural productivity, the farm lies within a region well known for excellent waterfowl hunting. The property is located less than four miles from the renowned Bayou Meto Wildlife Management Area, one of the most celebrated public waterfowl hunting destinations in Arkansas. Hunting rights have historically been retained by ownership for personal use but could easily be leased for additional annual income.

Wabaseka Farm represents a rare opportunity to acquire an investment-grade, fully improved rice farm with strong waterfowl hunting potential in one of Arkansas's most desirable agricultural regions.

OWNERSHIP MAP



LOCATION MAP





LOCATION & ACCESS

Wabbaseka, Arkansas; Jefferson County
Southeastern Region of Arkansas

Mileage Chart

Wabbaseka, AR	2 Miles
Stuttgart, AR	20 Miles
Little Rock, AR	50 Miles
Memphis, TN	130 Miles

Wilson Road provides good access to the south farm while the north farm is easily accessed via Mulberry Grove Road.







FARM INFORMATION

Tillable Acreage

273± tillable acres

Crop Rotation

Rice and soybeans

Irrigation

The tillable acres on the north farm are irrigated by a ten (10") electric turbine well, and an eight (8") electric turbine well. The

south farm is irrigated by an eight (8") electric submersible well.

Soils

Class II: 72%, Class III: 28%

Farm Bases

Copies of the Farm Service Agency (FSA) 156EZ can be found in this brochure.



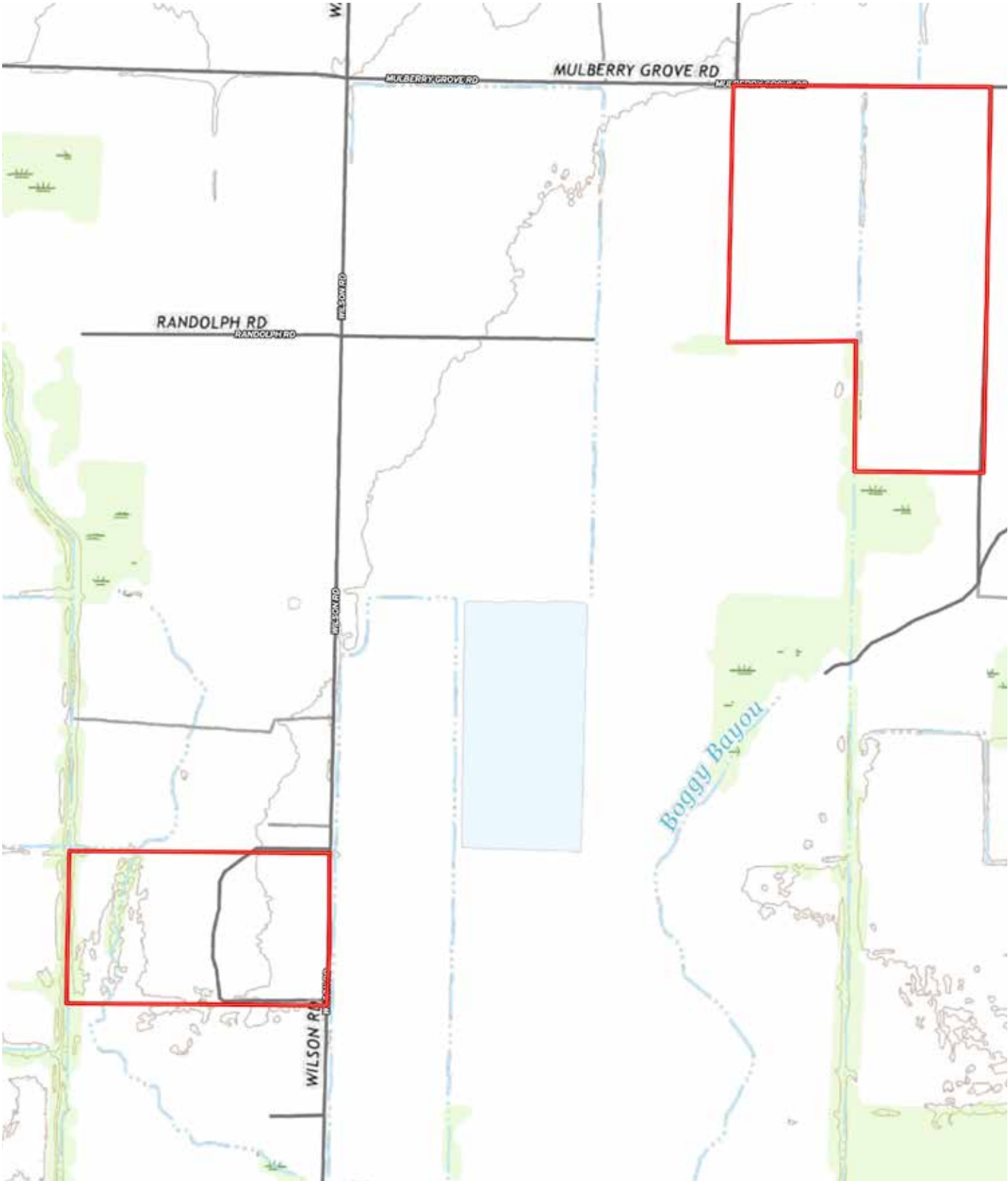
IRRIGATION MAP



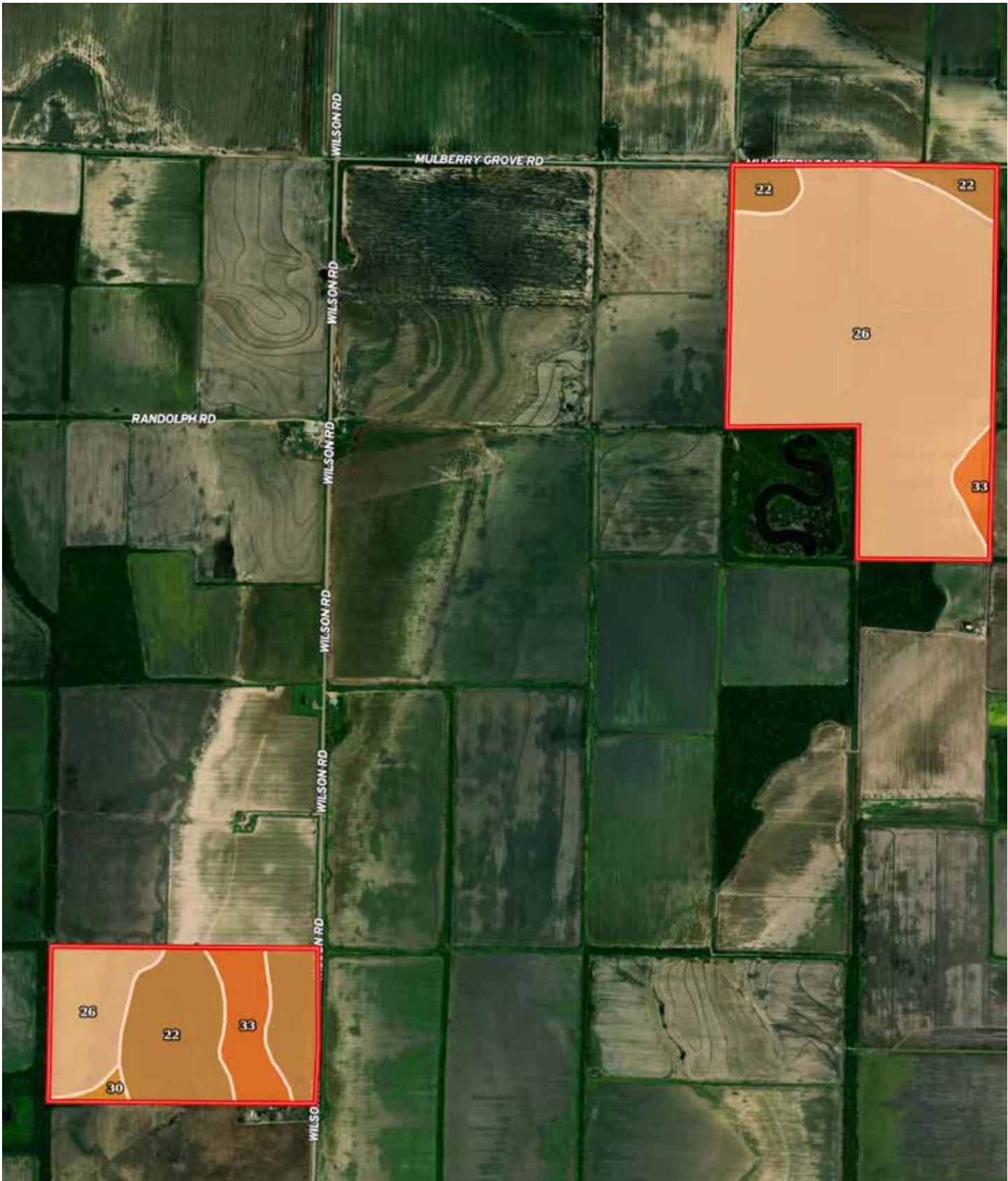
● 10" Electric Turbine ● 8" Electric Turbine ● 8" Electric Submersible ● Riser



TOPOGRAPHY MAP



SOIL MAP



SOIL MAP KEY

SOIL CODE	SOIL DESCRIPTION	ACRES	%	CPI	NCCPI	CAP
26	Perry clay, 0 to 1 percent slopes	206.94	69.42	0	48	3w
22	McGehee silt loam, 0 to 1 percent slopes	63.88	21.43	0	72	2w
33	Rilla silt loam, 0 to 1 percent slopes	24.7	8.29	0	85	2e
30	Portland clay, 0 to 1 percent slopes	2.57	0.86	0	56	3w
TOTALS		298.09(*)	100%	-	56.28	2.7

(*) Total acres may differ in the second decimal compared to the sum of each acreage soil. This is due to a round error because we only show the acres of each soil with two decimal.





RESOURCES & PRICE

Mineral Rights

All mineral rights owned by the Seller, if any, shall transfer to the Buyer.

Real Estate Taxes (estimated)

\$3,813.00

Offering Price

\$2,022,420.00

To learn more about the Wabbaseka Farm or to schedule a property tour, contact Gar Lile, Gardner Lile or Collier Watkins at Lile Real Estate, Inc.

Gar Lile

501-920-7015 (m)
glile@lilerealestate.com

Gardner Lile

501-658-9275 (m)
gardner@lilerealestate.com

Collier Watkins

501-837-4868 (m)
cwatkins@lilerealestate.com



FARM SERVICE AGENCY

ARKANSAS
JEFFERSON



United States Department of Agriculture
Farm Service Agency

FARM : 3442

Prepared : 3/17/26 9:43 AM CST

Form: FSA-156EZ

Crop Year : 2026

See Page 2 for non-discriminatory Statements.

Abbreviated 156 Farm Record

Operator Name : HERRERA LAND COMPANY LLC
 CRP Contract Number(s) : None
 Recon ID : 05-069-2016-57
 Transferred From : None
 ARCPLC G/W Eligibility : Eligible

Farm Land Data

Farmland	Cropland	DCP Cropland	WBP	EWP	WRP	GRP	Sugarcane	Farm Status	Number Of Tracts
202.00	185.80	185.80	0.00	0.00	0.00	0.00	0.0	Active	1
State Conservation	Other Conservation	Effective DCP Cropland	Double Cropped		CRP	MPL	DCP Ag.Rel. Activity	SOD	
0.00	0.00	185.80	6.30		0.00	0.00	0.00	0.00	

Crop Election Choice

ARC Individual	ARC County	Price Loss Coverage
None	WHEAT, SORGH, SOYBN	RICE-LGR

DCP Crop Data

Crop Name	Base Acres	CCC-505 CRP Reduction Acres	PLC Yield	HIP
Wheat	4.80	0.00	38	
Grain Sorghum	6.60	0.00	55	
Soybeans	110.30	0.00	31	100
Rice-Long Grain	70.40	0.00	5987	
TOTAL	192.10	0.00		

NOTES

Tract Number : 79

Description : P-6
 FSA Physical Location : ARKANSAS/JEFFERSON
 ANSI Physical Location : ARKANSAS/JEFFERSON
 BIA Unit Range Number :
 CRP Contract Number(s) : None
 HEL Status : NHEL: No agricultural commodity planted on undetermined fields
 Wetland Status : Wetland determinations not complete
 WL Violations : None
 Owners : HERRERA LAND COMPANY LLC
 Other Producers : None
 Recon ID : None

FARM SERVICE AGENCY

ARKANSAS
JEFFERSON
Form: FSA-156EZ



United States Department of Agriculture
Farm Service Agency

Abbreviated 156 Farm Record

FARM : 3442
Prepared : 3/17/26 9:43 AM CST
Crop Year : 2026

Tract Land Data

Tract 79 Continued ...

Farm Land	Cropland	DCP Cropland	WBP	EWP	WRP	GRP	Sugarcane
202.00	185.80	185.80	0.00	0.00	0.00	0.00	0.0
State Conservation	Other Conservation	Effective DCP Cropland	Double Cropped	CRP	MPL	DCP Ag. Rel Activity	SOD
0.00	0.00	185.80	6.30	0.00	0.00	0.00	0.00

DCP Crop Data

Crop Name	Base Acres	CCC-505 CRP Reduction Acres	PLC Yield
Wheat	4.80	0.00	38
Grain Sorghum	6.60	0.00	55
Soybeans	110.30	0.00	31
Rice-Long Grain	70.40	0.00	5987
TOTAL	192.10	0.00	

NOTES

In accordance with Federal civil rights law and U.S. Department of Agriculture (USDA) civil rights regulations and policies, the USDA, its Agencies, offices, and employees, and institutions participating in or administering USDA programs are prohibited from discriminating based on race, color, national origin, religion, sex, disability, age, marital status, family/parental status, income derived from a public assistance program, political beliefs, or reprisal or retaliation for prior civil rights activity, in any program or activity conducted or funded by USDA (not all bases apply to all programs). Remedies and complaint filing deadlines vary by program or incident.

Persons with disabilities who require alternative means of communication for program information (e.g., Braille, large print, audiotape, American Sign Language, etc.) should contact the State or Local Agency that administers the program or contact USDA through the Telecommunications Relay Service at 711 (voice and TTY). Additionally, program information may be made available in languages other than English.

To file a program discrimination complaint, complete the USDA Program Discrimination Complaint Form, AD-3027, found online at [How to File a Program Discrimination Complaint](#) and at any USDA office or write a letter addressed to USDA and provide in the letter all of the information requested in the form. To request a copy of the complaint form, call (866) 632-9952. Submit your completed form or letter to USDA by: (1) Mail: U.S. Department of Agriculture Office of the Assistant Secretary for Civil Rights, 1400 Independence Avenue, SW Washington, D.C. 20250-9410; (2) Fax: (202) 690-7442; or (3) Email: program.intake@usda.gov. USDA is an equal opportunity provider, employer, and lender.

FARM SERVICE AGENCY

ARKANSAS
JEFFERSON



United States Department of Agriculture
Farm Service Agency

FARM : 3750

Prepared : 3/17/26 9:43 AM CST

Form: FSA-156EZ

Crop Year : 2026

See Page 2 for non-discriminatory Statements.

Abbreviated 156 Farm Record

Operator Name : HERRERA LAND COMPANY LLC
 CRP Contract Number(s) : None
 Recon ID : 05-069-2020-41
 Transferred From : None
 ARCPLC G/VF Eligibility : Eligible

Farm Land Data

Farmland	Cropland	DCP Cropland	WBP	EWP	WRP	GRP	Sugarcane	Farm Status	Number Of Tracts
94.94	87.50	87.50	0.00	0.00	0.00	0.00	0.0	Active	1
State Conservation	Other Conservation	Effective DCP Cropland	Double Cropped		CRP	MPL	DCP Ag.Rel. Activity	SOD	
0.00	0.00	87.50	7.10		0.00	0.00	0.00	0.00	

Crop Election Choice

ARC Individual	ARC County	Price Loss Coverage
None	CORN, SOYBN	RICE-LGR

DCP Crop Data

Crop Name	Base Acres	CCC-505 CRP Reduction Acres	PLC Yield	HIP
Corn	13.90	0.00	153	100
Soybeans	40.53	0.00	34	100
Rice-Long Grain	37.69	0.00	6397	
TOTAL	92.12	0.00		

NOTES

--

Tract Number : 792

Description : O/7
 FSA Physical Location : ARKANSAS/JEFFERSON
 ANSI Physical Location : ARKANSAS/JEFFERSON
 BIA Unit Range Number :
 CRP Contract Number(s) : None
 HEL Status : NHEL: No agricultural commodity planted on undetermined fields
 Wetland Status : Tract does not contain a wetland
 WL Violations : None
 Owners : HERRERA LAND COMPANY LLC
 Other Producers : None
 Recon ID : None

Tract Land Data

Farm Land	Cropland	DCP Cropland	WBP	EWP	WRP	GRP	Sugarcane
94.94	87.50	87.50	0.00	0.00	0.00	0.00	0.0

FARM SERVICE AGENCY

ARKANSAS JEFFERSON Form: FSA-156EZ	United States Department of Agriculture Farm Service Agency Abbreviated 156 Farm Record	FARM : 3750 Prepared : 3/17/26 9:43 AM CST Crop Year : 2026
--	--	--

Tract 792 Continued ...

State Conservation	Other Conservation	Effective DCP Cropland	Double Cropped	CRP	MPL	DCP Ag. Rel Activity	SOD
0.00	0.00	87.50	7.10	0.00	0.00	0.00	0.00

DCP Crop Data

Crop Name	Base Acres	CCC-505 CRP Reduction Acres	PLC Yield
Corn	13.90	0.00	153
Soybeans	40.53	0.00	34
Rice-Long Grain	37.69	0.00	6397
TOTAL	92.12	0.00	

NOTES

--

In accordance with Federal civil rights law and U.S. Department of Agriculture (USDA) civil rights regulations and policies, the USDA, its Agencies, offices, and employees, and institutions participating in or administering USDA programs are prohibited from discriminating based on race, color, national origin, religion, sex, disability, age, marital status, family/parental status, income derived from a public assistance program, political beliefs, or reprisal or retaliation for prior civil rights activity, in any program or activity conducted or funded by USDA (not all bases apply to all programs). Remedies and complaint filing deadlines vary by program or incident.

Persons with disabilities who require alternative means of communication for program information (e.g., Braille, large print, audiotape, American Sign Language, etc.) should contact the State or Local Agency that administers the program or contact USDA through the Telecommunications Relay Service at 711 (voice and TTY). Additionally, program information may be made available in languages other than English.

To file a program discrimination complaint, complete the USDA Program Discrimination Complaint Form, AD-3027, found online at [How to File a Program Discrimination Complaint](#) and at any USDA office or write a letter addressed to USDA and provide in the letter all of the information requested in the form. To request a copy of the complaint form, call (866) 632-9892. Submit your completed form or letter to USDA by: (1) Mail: U.S. Department of Agriculture Office of the Assistant Secretary for Civil Rights, 1400 Independence Avenue, SW Washington, D.C. 20250-9410; (2) Fax: (202) 690-7442; or (3) Email: program.intake@usda.gov. USDA is an equal opportunity provider, employer, and lender.


FARM SERVICE AGENCY


 United States Department of Agriculture
Jefferson County, Arkansas







Common Land Unit

Non-Cropland; Cropland

 Tract Boundary

Wetland Determination Identifiers

-  Restricted Use
-  Limited Restrictions
-  Exempt from Conservation
-  Compliance Provisions

Imagery Year: 2023

2025 Program Year

Map Created December 06, 2024

Farm 3442

Tract 79

Tract Cropland Total: 185.80 acres

United States Department of Agriculture (USDA) Farm Service Agency (FSA) maps are for FSA Program administration only. This map does not represent a legal survey or reflect actual ownership; rather it depicts the information provided directly from the producer and/or National Agricultural Imagery Program (NAIP) Imagery. The producer accepts the data "as is" and assumes all risks associated with its use. USDA-FSA assumes no responsibility for actual or consequential damage incurred as a result of any user's reliance on this data outside FSA Programs. Wetland identifiers do not represent the size, shape, or specific determination of the area. Refer to your original determination (CPA-026 and attached maps) for exact boundaries and determinations or contact USDA Natural Resources Conservation Service (NRCS).

FARM SERVICE AGENCY


United States Department of Agriculture
Jefferson County, Arkansas



Common Land Unit

- Non-Cropland; Cropland
- Tract Boundary

Wetland Determination Identifiers

- Restricted Use
- ▼ Limited Restrictions
- Exempt from Conservation
- Compliance Provisions

Imagery Year: 2023

2025 Program Year

Map Created December 06, 2024

Farm 3750

Tract 792

Tract Cropland Total: 87.50 acres

United States Department of Agriculture (USDA) Farm Service Agency (FSA) maps are for FSA Program administration only. This map does not represent a legal survey or reflect actual ownership; rather it depicts the information provided directly from the producer and/or National Agricultural Imagery Program (NAIP) imagery. The producer accepts the data 'as is' and assumes all risks associated with its use. USDA-FSA assumes no responsibility for actual or consequential damage incurred as a result of any user's reliance on this data outside FSA Programs. Wetland identifiers do not represent the size, shape, or specific determination of the area. Refer to your original determination (CPA-026 and attached maps) for exact boundaries and determinations or contact USDA Natural Resources Conservation Service (NRCS).



DISCLOSURE STATEMENT: Lile Real Estate, Inc. is the listing agency for the owner of the property described within this offering brochure. A representative of Lile Real Estate, Inc. must be present to conduct a showing.

The management of Lile Real Estate, Inc. respectfully requests that interested parties contact us in advance to schedule a proper showing and do not attempt to tour or trespass on the property on their own. Thank you for your cooperation.

Some images shown within this offering brochure are used for representative purposes and may not have been taken on location at the subject property. This offering is subject to errors, omissions, change or withdrawal without notice. All information provided herein is intended as a general guideline and has been provided by sources deemed reliable, but the accuracy of which we cannot guarantee.

CONNECTING LAND BUYERS AND SELLERS SINCE 1993.

Lile Real Estate is a dedicated team of professionals with an in-depth understanding and a network of qualified buyers within the Mid-South and across the country. For over 30 years, we've connected land sellers with buyers in Arkansas, Louisiana, Mississippi, and Tennessee.



For more information or to schedule a property tour, contact:

Scan for more info



GAR LILE

501.920.7015 (m)
glile@lilerealestate.com

GARDNER LILE

501.658.9275 (m)
gardner@lilerealestate.com

COLLIER WATKINS

501.837.4868 (m)
cwatkins@lilerealestate.com



1 Allied Drive, Suite 2220
Little Rock, Arkansas 72202

WWW.LILEREALSTATE.COM



501.374.3411 (Office)
501.421.0031 (Fax)

INFO@LILEREALSTATE.COM