



# BAYOU DES ARC GETAWAY

**A Recreational Investment Opportunity**

**71± Total Acres | \$750,000.00**

**Prairie County, Arkansas**



**AGRICULTURE | RECREATION | TIMBERLAND**

**Traditional Brokerage + Sealed Bids + Consulting**

**LICENSED IN ARKANSAS, LOUISIANA, MISSISSIPPI, AND TENNESSEE**



# BAYOU DES ARC GETAWAY

## QUICK FACTS

### Acreeage

71± total acres

### Location

Des Arc, Arkansas

### Access

Bayou Loop Road and Arkansas Highway 11

### Recreation

Deer, duck, turkey, and fishing

### Notable Features

- 71± acres
- 2,168± sq. ft. lodge
  - 3 bedrooms
  - 2 bathrooms
- Contract access to private boat ramp
- 864± sq. ft. shop

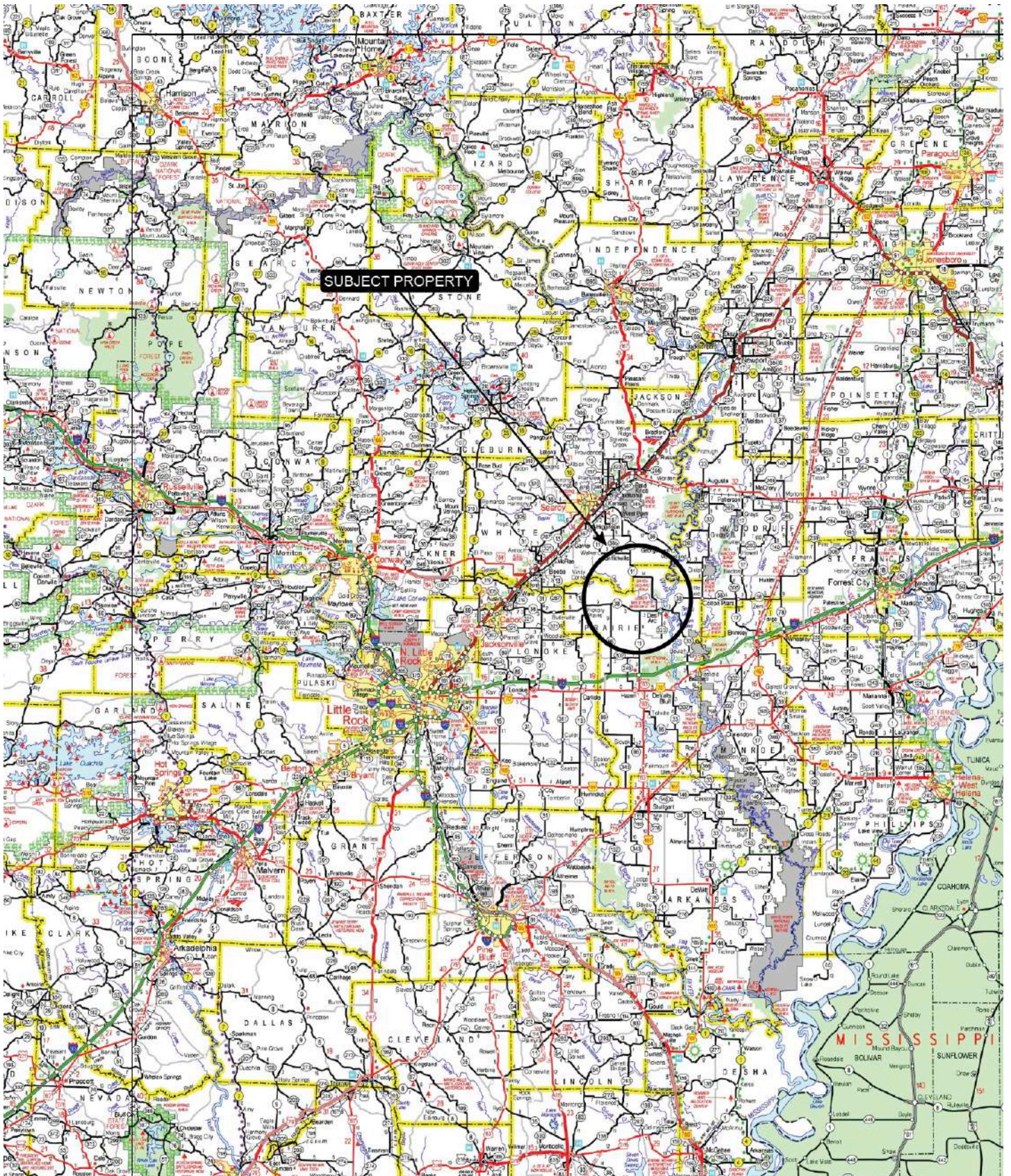
### Offering Price

\$750,000.00





# VICINITY MAP



# PROPERTY DESCRIPTION

## BAYOU DES ARC GETAWAY

The Bayou Des Arc Getaway consists of 71± acres across two tracts in Prairie County, Arkansas, offering an excellent recreational investment opportunity. The property provides a year-round retreat with the comforts of home while enjoying duck, deer, and turkey hunting, as well as fishing.

Located along Bayou Des Arc, just three miles upstream from its confluence with the White River, the property features a mix of bottomland hardwoods with a small portion planted in pine plantation. Deer hunting opportunities are present throughout the property, with numerous stands already in place.

Duck hunting opportunities exist along the bayou and throughout the property when Bayou Des Arc flows out of its banks and floods the lower portions of the land. Fishing along the bayou is known to be excellent for crappie, bass, bream, and catfish.

Just across the bayou from the property sits a beautiful 2,168± square-foot lodge on approximately 1± acre. The lodge features three bedrooms and two bathrooms, along with a full kitchen and an





open-concept living area.

Approximately 620 ± square feet of elevated outdoor deck space, along with a covered firepit area, provides excellent views of the bayou and great spaces for entertaining family and friends. An 864 ± square-foot shop located adjacent to the lodge offers ample storage for hunting and fishing equipment.

The lodge is accessible via Bayou Loop Road, while the property can be reached via a deeded easement from Highway 11 or by a short boat ride from the lodge.

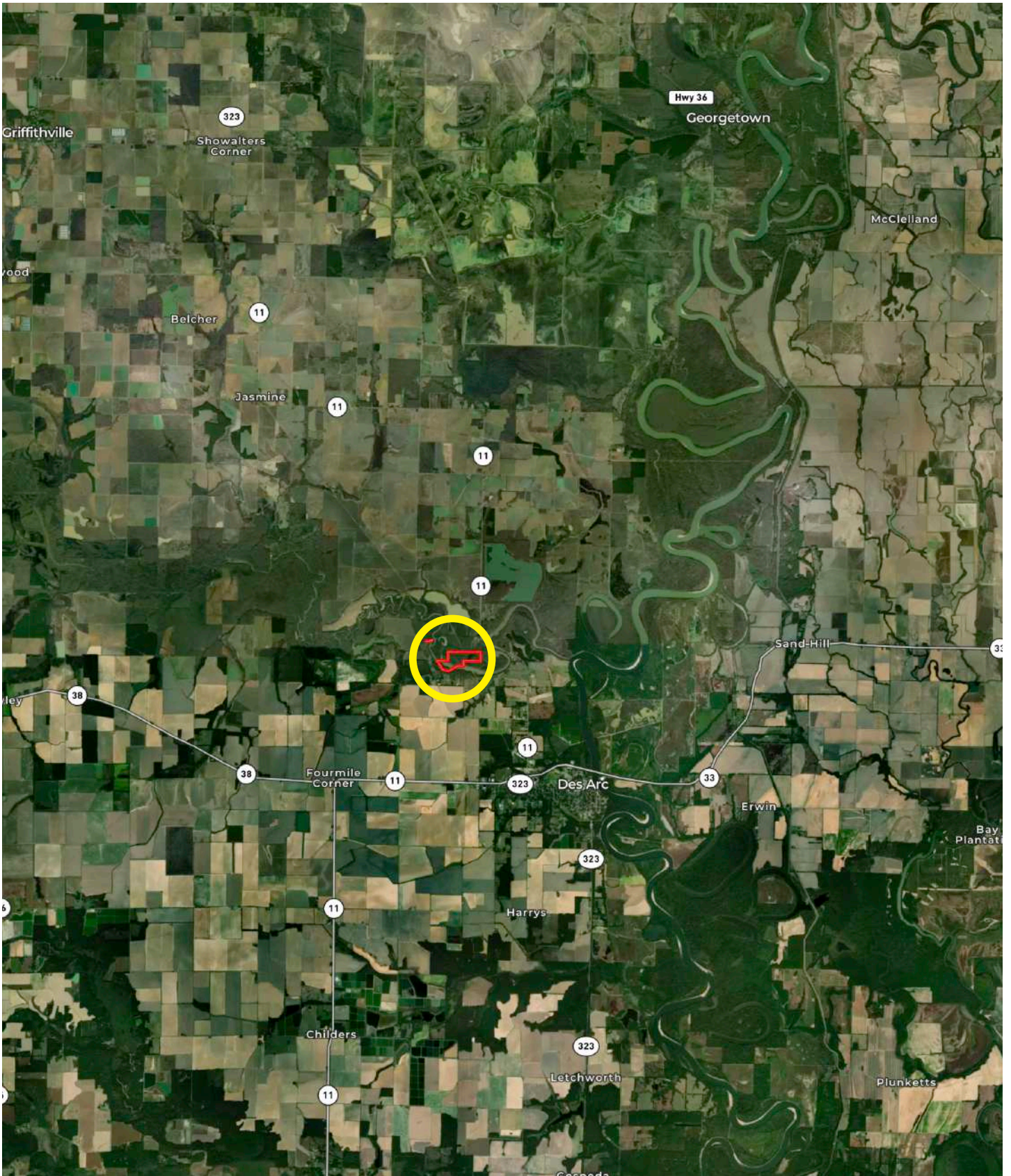
This offering will convey with year-round access to a boat ramp into Bayou Des Arc, located adjacent to the lodge.



# OWNERSHIP MAP



# LOCATION MAP









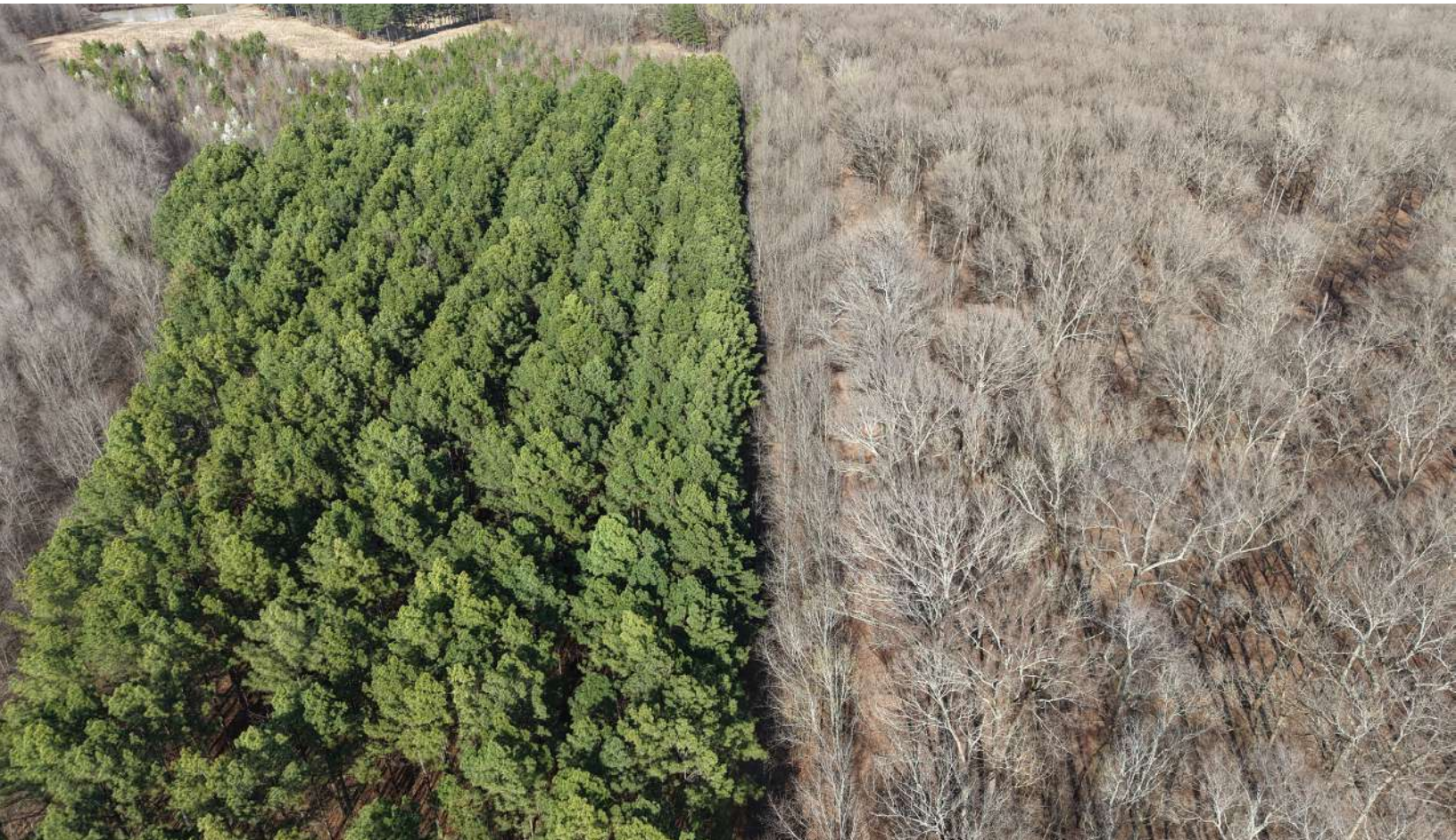
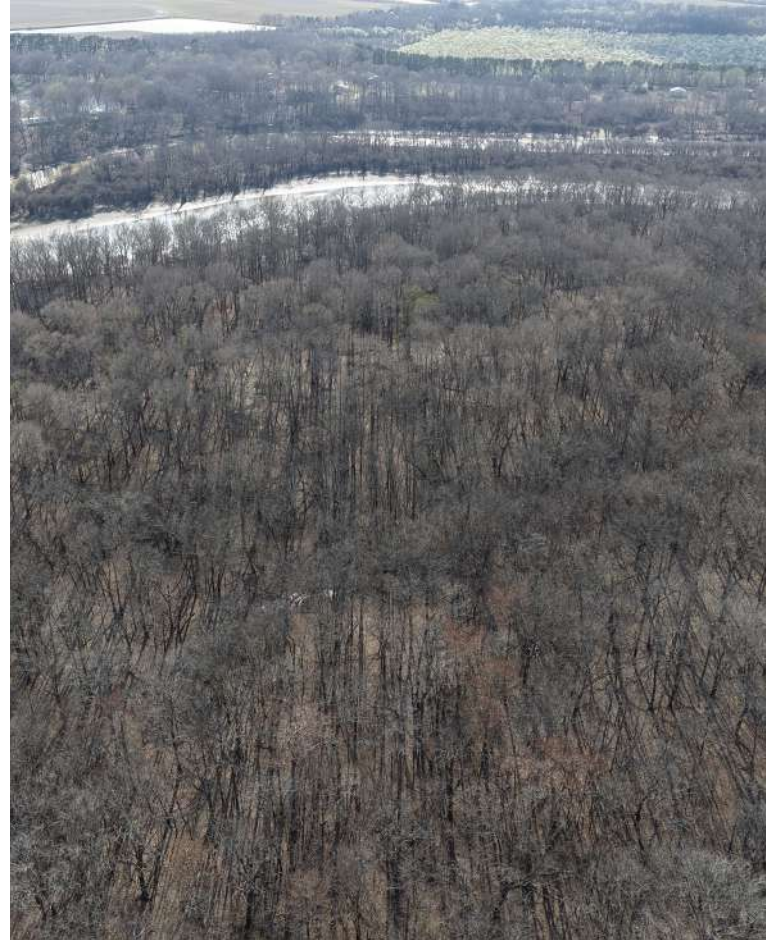
# LOCATION & ACCESS

Des Arc, Prairie County, Arkansas  
Eastern Region of Arkansas

## Mileage Chart

Des Arc, AR	4 Miles
Searcy, AR	30 Miles
Little Rock, AR	60 Miles
Memphis, TN	98 Miles

Access via Bayou Loop Road and Arkansas  
State Highway 11.

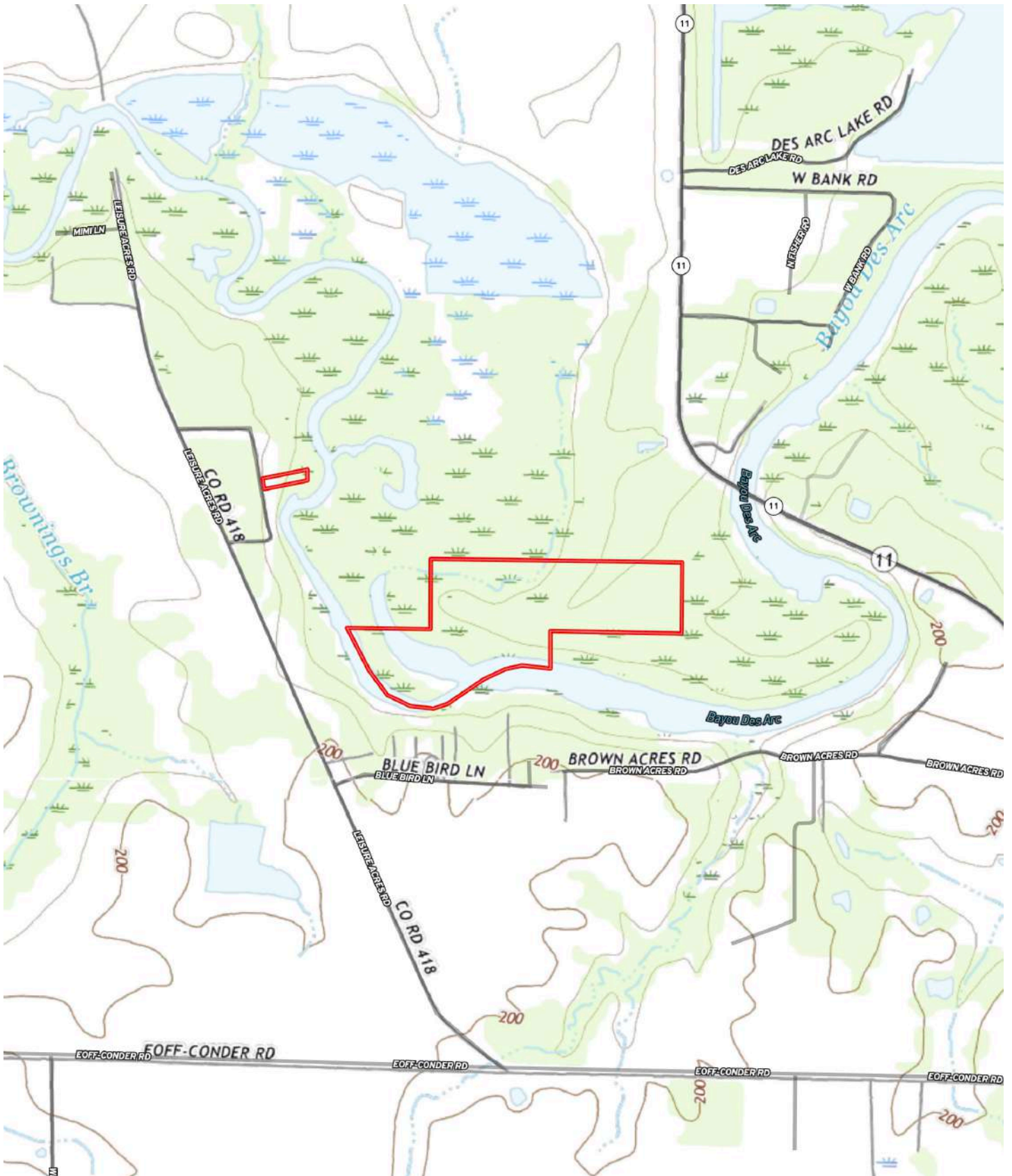


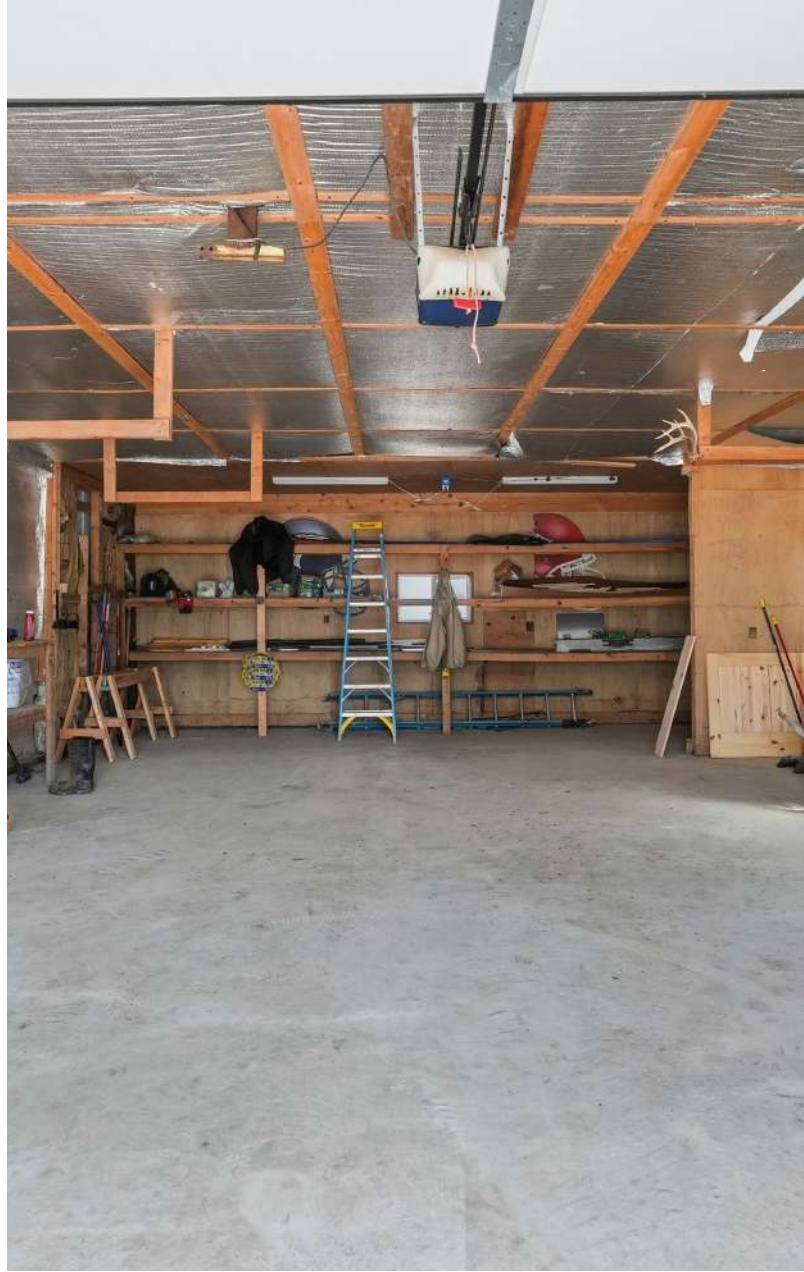






# TOPOGRAPHY MAP





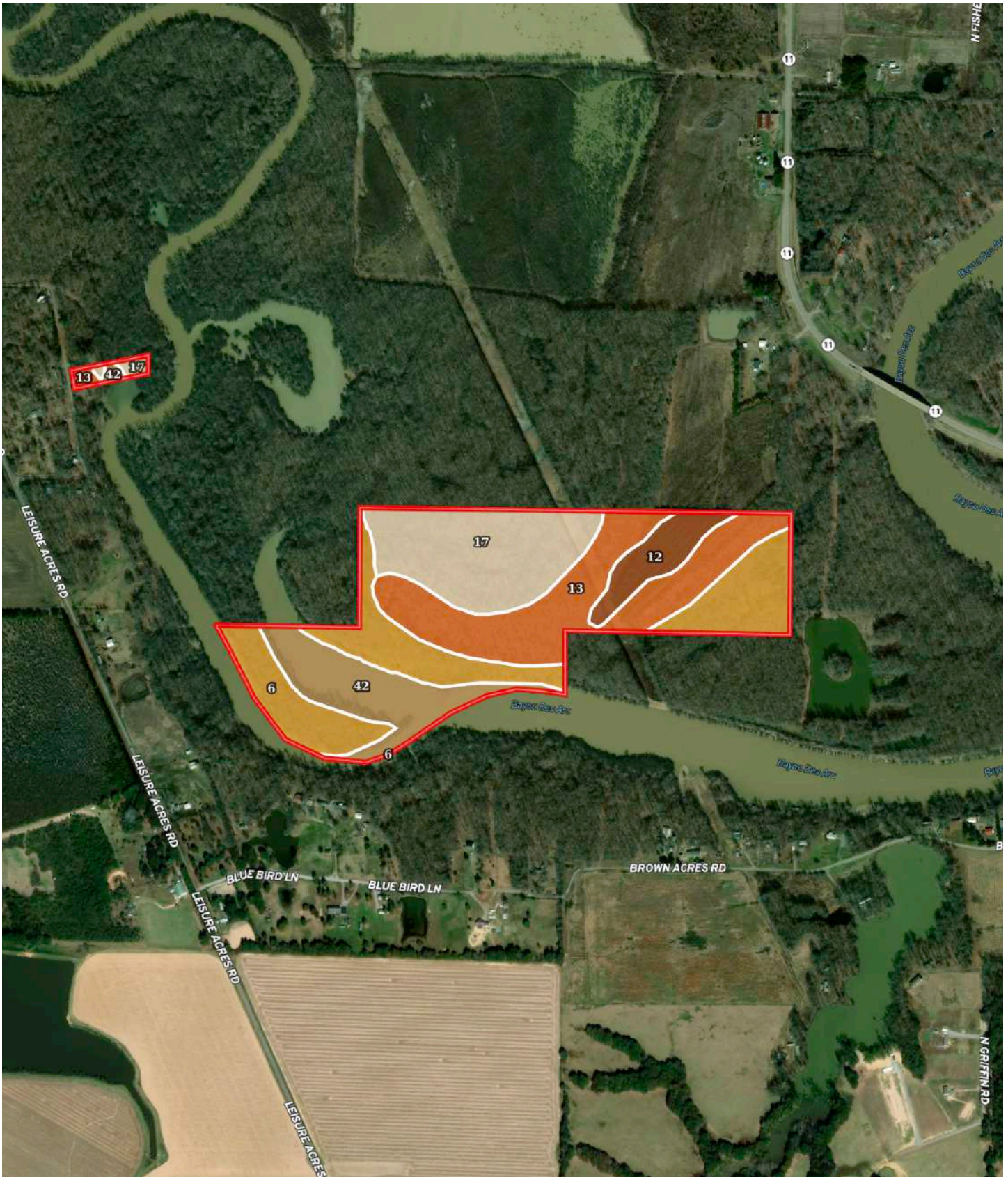








# SOIL MAP



# SOIL MAP KEY

SOIL CODE	SOIL DESCRIPTION	ACRES	%	CPI	NCCPI	CAP
6	Commerce silt loam, frequently flooded	21.97	29.31	0	68	4w
13	Jackport silty clay loam, 1 to 3 percent slopes	20.36	27.16	0	55	3e
17	Kobel silty clay loam, frequently flooded	16.83	22.45	0	36	4w
42	Water	11.02	14.7	0	-	8
12	Jackport silty clay loam, 0 to 1 percent slopes	4.76	6.35	0	55	3w
TOTALS		74.94(*)	100%	-	46.45	4.25

(\*) Total acres may differ in the second decimal compared to the sum of each acreage soil. This is due to a round error because we only show the acres of each soil with two decimal.







# RESOURCES & PRICE

## Mineral Rights

All mineral rights owned by the Seller, if any, shall transfer to the Buyer.

## Real Estate Taxes (estimated)

\$543.00

## Offering Price

\$750,000.00

To learn more about the Bayou Des Arc Getaway or to schedule a property tour, contact Gardner Lile or Collier Watkins of Lile Real Estate, Inc.

## Gardner Lile

501-658-9275 (m)

[gardner@lilerealestate.com](mailto:gardner@lilerealestate.com)

## Collier Watkins

501-837-4868 (m)

[cwatkins@lilerealestate.com](mailto:cwatkins@lilerealestate.com)















**DISCLOSURE STATEMENT:** Lile Real Estate, Inc. is the listing agency for the owner of the property described within this offering brochure. A representative of Lile Real Estate, Inc. must be present to conduct a showing.

The management of Lile Real Estate, Inc. respectfully requests that interested parties contact us in advance to schedule a proper showing and do not attempt to tour or trespass on the property on their own. Thank you for your cooperation.

Some images shown within this offering brochure are used for representative purposes and may not have been taken on location at the subject property. This offering is subject to errors, omissions, change or withdrawal without notice. All information provided herein is intended as a general guideline and has been provided by sources deemed reliable, but the accuracy of which we cannot guarantee.

# CONNECTING LAND BUYERS AND SELLERS SINCE 1993.

Lile Real Estate is a dedicated team of professionals with an in-depth understanding and a network of qualified buyers within the Mid-South and across the country. For over 30 years, we've connected land sellers with buyers in Arkansas, Louisiana, Mississippi, and Tennessee.



For more information or to  
schedule a property tour, contact:

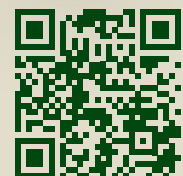
**GARDNER LILE**

501.658.9275 (m)  
gardner@lilerealestate.com

**COLLIER WATKINS**

501.837.4868 (m)  
cwatkins@lilerealestate.com

Scan for  
more info





1 Allied Drive, Suite 2220  
Little Rock, Arkansas 72202

[WWW.LILEREALSTATE.COM](http://WWW.LILEREALSTATE.COM)



501.374.3411 (Office)  
501.421.0031 (Fax)

[INFO@LILEREALSTATE.COM](mailto:INFO@LILEREALSTATE.COM)