



# BUTLERVILLE PINE NORTH

A Recreational and Timberland Investment Opportunity

160± Total Acres | \$752,000.00

Lonoke County, Arkansas



**AGRICULTURE | RECREATION | TIMBERLAND**

Traditional Brokerage + Sealed Bids + Consulting

LICENSED IN ARKANSAS, LOUISIANA, MISSISSIPPI, AND TENNESSEE





# BUTLERVILLE PINE NORTH

## QUICK FACTS

### **Acreage**

160± total acres

### **Location**

Lonoke County, Arkansas

### **Access**

Arkansas State Highway 38 and  
Black Jack Road

### **Recreation**

Deer and small game hunting

### **Timber Stocking**

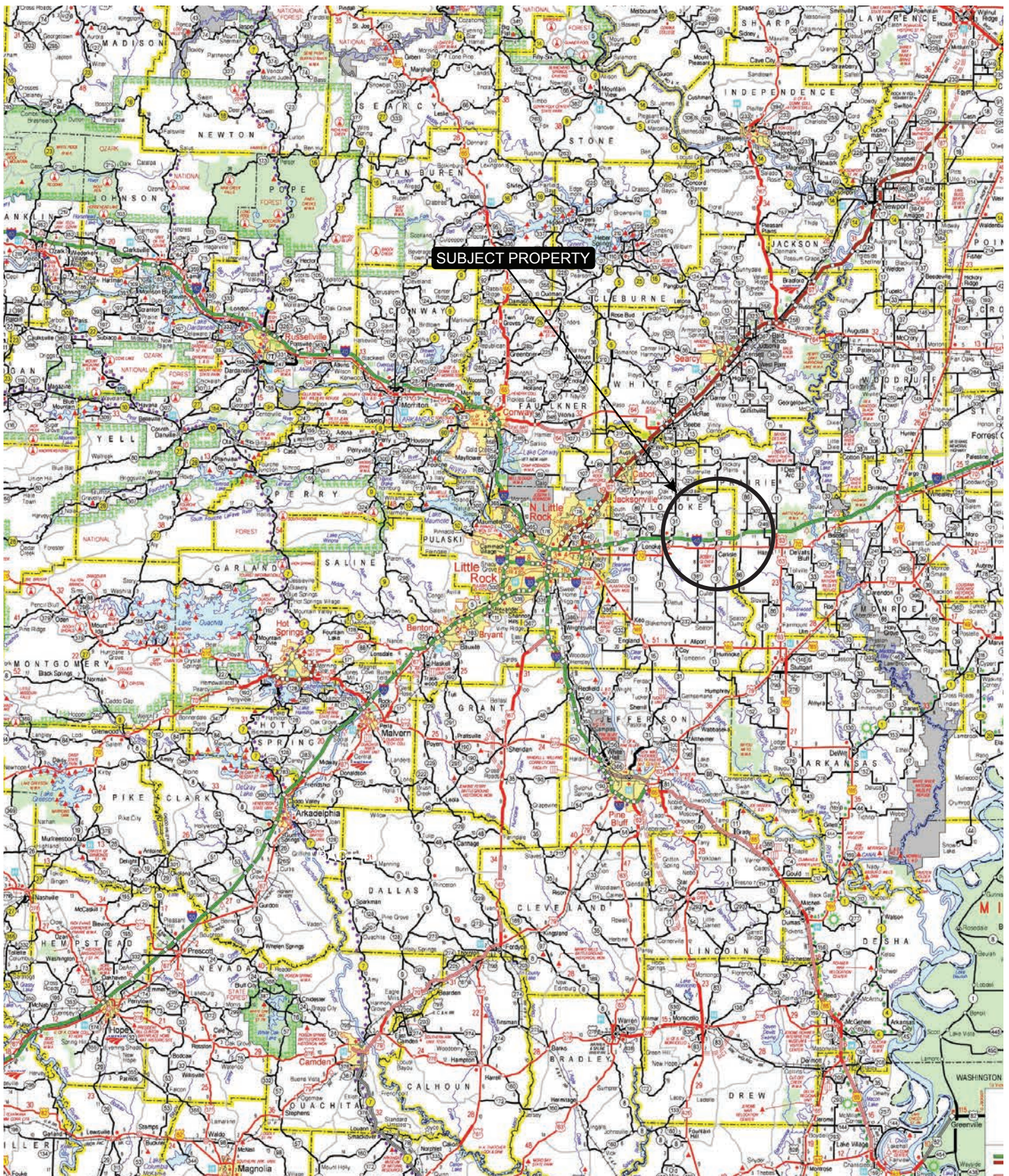
Pine plantation

### **Offering Price**

\$752,000.00 (\$4,700.00 per  
acre)



# VICINITY MAP





# PROPERTY DESCRIPTION

## BUTLERVILLE PINE NORTH

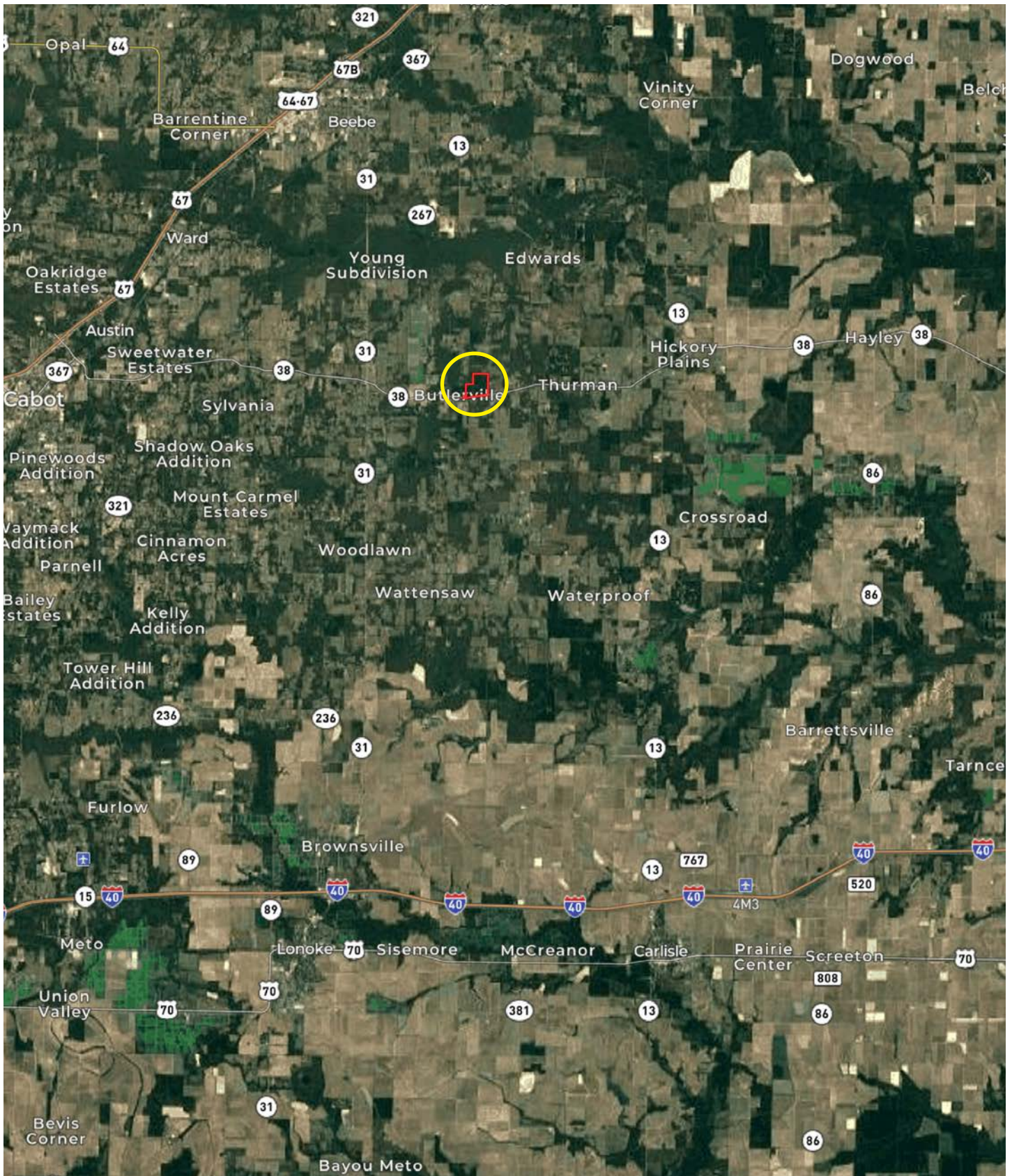
Butlerville Pine North is an excellent timberland and development investment opportunity located just north of the community of Butlerville, and east of the city of Cabot. This property offers 160± acres of mature pine plantation which could be developed further for deer and small game hunting. A copy of the current timber cruise can be provided upon request. Addition-

ally, it is located in a high growth corridor for the two surrounding communities in the Cabot School District, offering an excellent residential development opportunity. Access is considered excellent from both State Highway 38 and Black Jack Road. Available utilities include water, electricity, and telephone.



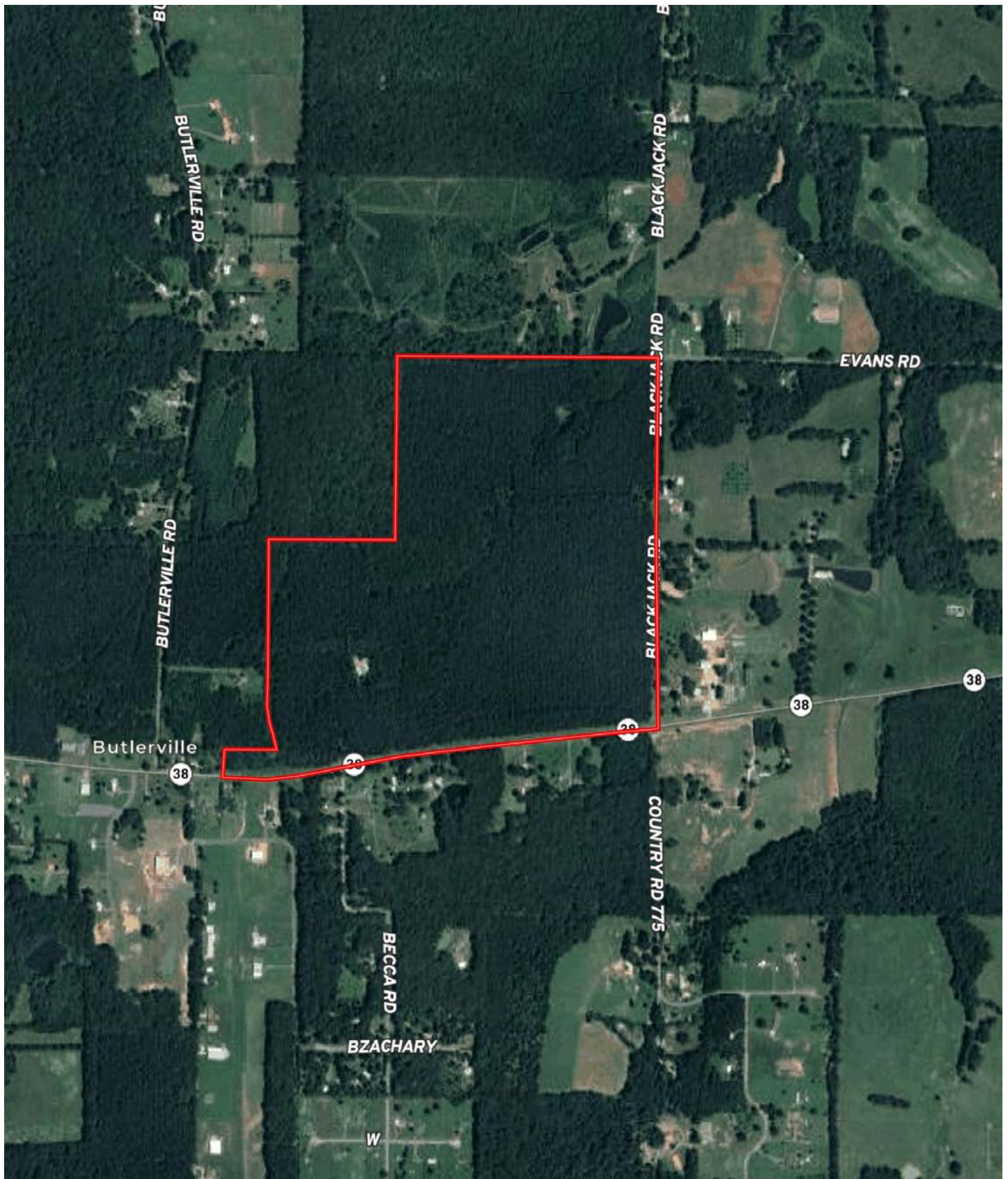


# LOCATION MAP

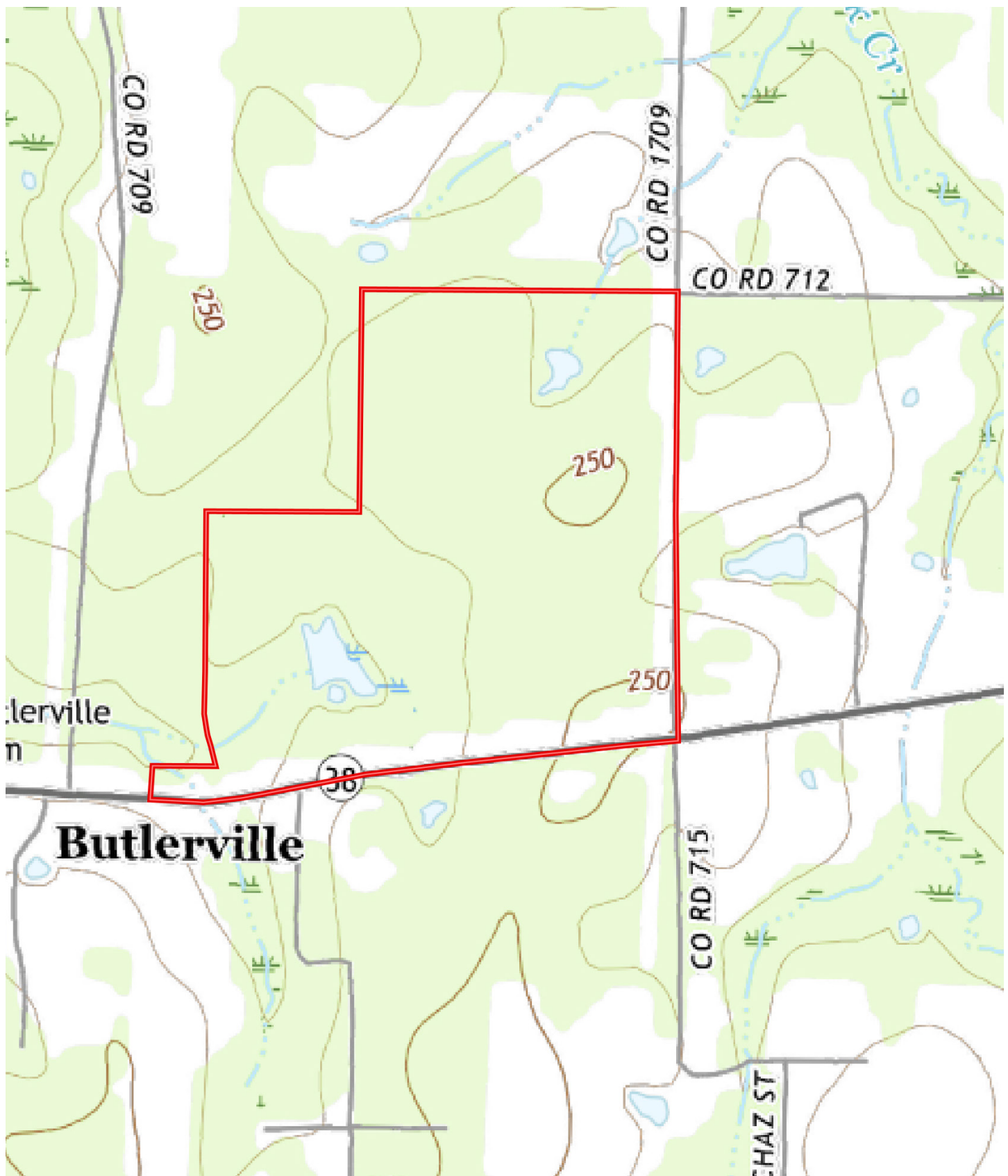




# AERIAL MAP



# TOPOGRAPHY MAP





# LOCATION & ACCESS

Butlerville, Lonoke County, Arkansas  
Eastern Region of Arkansas

## Mileage Chart

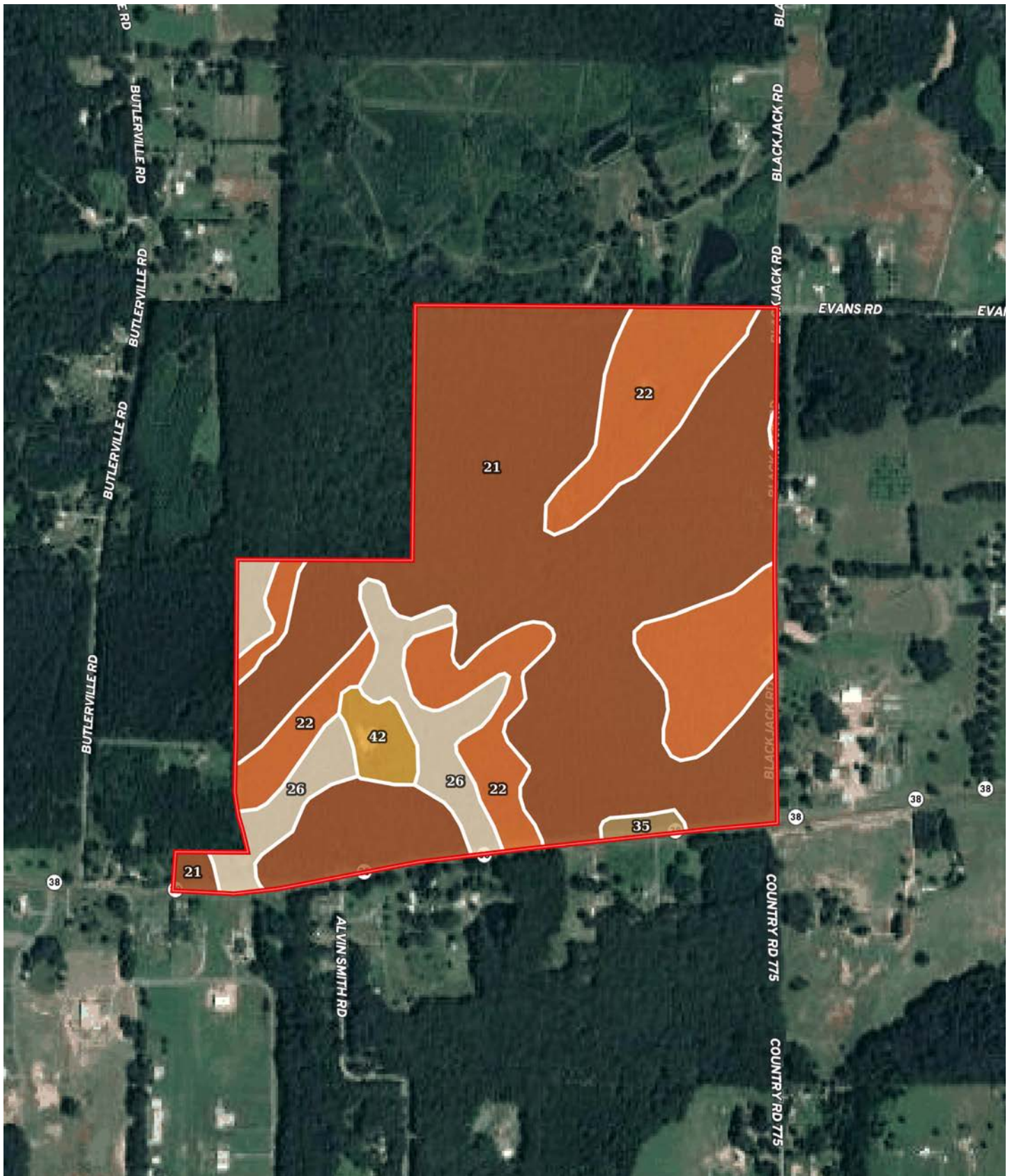
Cabot, AR	11 Miles
Lonoke, AR	17 Miles
Little Rock, AR	44 Miles

The property has excellent access from  
Arkansas State Highway 38 and Black Jack  
Road.





# SOIL MAP





# SOIL MAP KEY

SOIL CODE	SOIL DESCRIPTION	ACRES	%	CPI	NCCPI	CAP
21	Immanuel silt loam, 1 to 3 percent slopes	102.2 2	64.26	0	65	2e
22	Immanuel silt loam, 3 to 8 percent slopes	37.51	23.58	0	82	3e
26	Oaklimeter silt loam, occasionally flooded	14.9	9.37	0	81	2w
42	Water	3.34	2.1	0	-	8
35	Stuttgart silt loam, 0 to 1 percent slopes	1.1	0.69	0	66	2w
TOTALS		159.0 7(*)	100%	-	69.15	2.36

(\*) Total acres may differ in the second decimal compared to the sum of each acreage soil. This is due to a round error because we only show the acres of each soil with two decimal.

## Capability Legend

Increased Limitations and Hazards

Decreased Adaptability and Freedom of Choice Users

Land, Capability



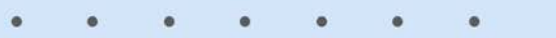
'Wild Life'



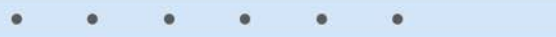
Forestry



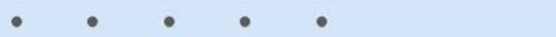
Limited



Moderate



Intense



Limited



Moderate



Intense



Very Intense



## Grazing Cultivation

(c) climatic limitations (e) susceptibility to erosion

(s) soil limitations within the rooting zone (w) excess of water



# RESOURCES & PRICE

## Mineral Rights

All mineral rights owned by the Seller, if any, shall transfer to the Buyer.

## Real Estate Taxes

\$175.00 (estimated)

## Offering Price

\$752,000.00 (\$4,700.00 per acre)

To learn more about the property or to schedule a property tour, contact Gardner Lile or Collier Watkins of Lile Real Estate, Inc.

## Collier Watkins

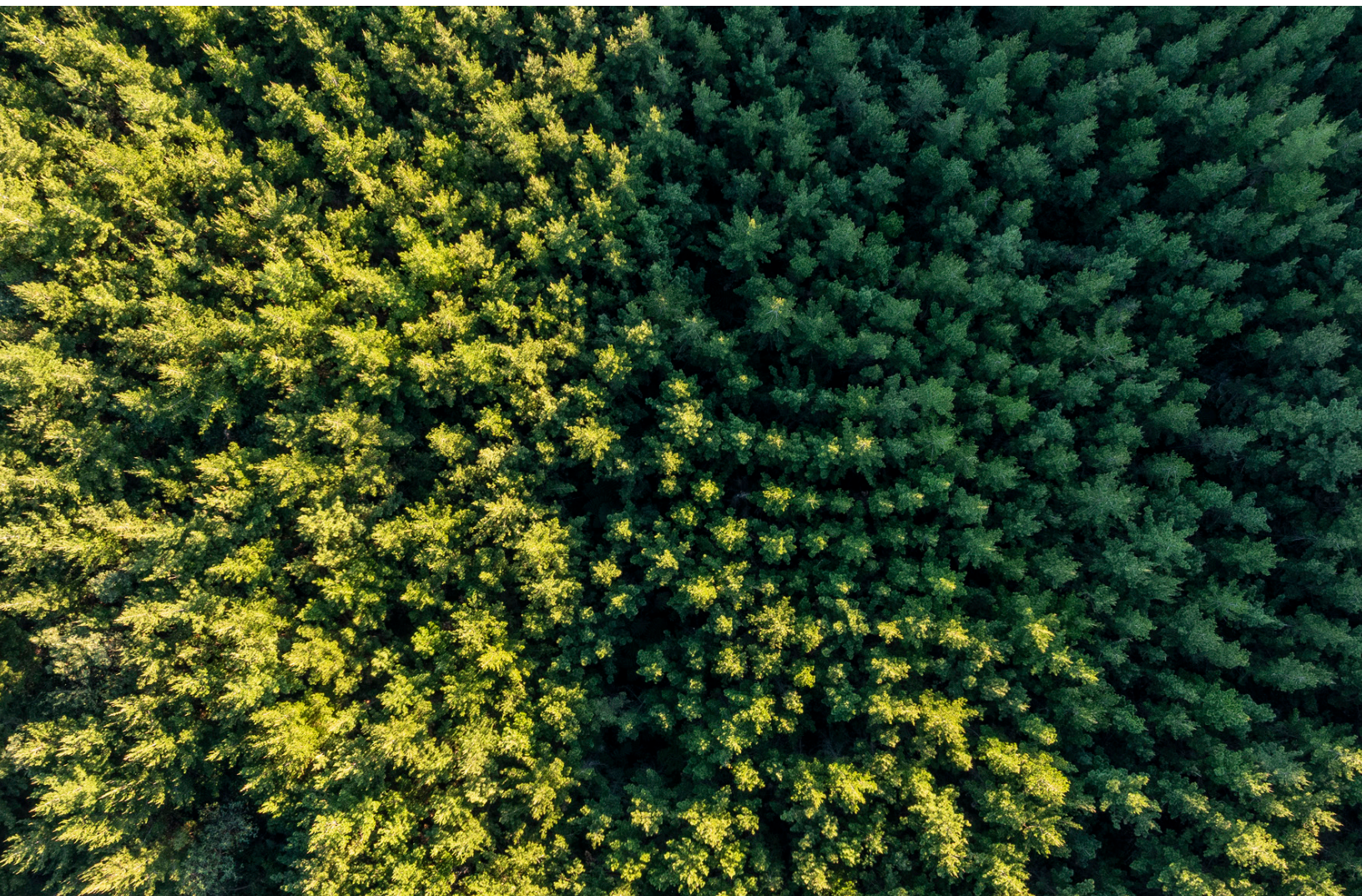
501-837-4868 (m)

[cwatkins@lilerealestate.com](mailto:cwatkins@lilerealestate.com)

## Gar Lile

501-920-7015 (m)

[glile@lilerealestate.com](mailto:glile@lilerealestate.com)







**DISCLOSURE STATEMENT:** Lile Real Estate, Inc. is the listing agency for the owner of the property described within this offering brochure. A representative of Lile Real Estate, Inc. must be present to conduct a showing.

The management of Lile Real Estate, Inc. respectfully requests that interested parties contact us in advance to schedule a proper showing and do not attempt to tour or trespass on the property on their own. Thank you for your cooperation.

Some images shown within this offering brochure are used for representative purposes and may not have been taken on location at the subject property. This offering is subject to errors, omissions, change or withdrawal without notice. All information provided herein is intended as a general guideline and has been provided by sources deemed reliable, but the accuracy of which we cannot guarantee.



# CONNECTING LAND BUYERS AND SELLERS SINCE 1993.

Lile Real Estate is a dedicated team of professionals with an in-depth understanding and a network of qualified buyers within the Mid-South and across the country. For over 30 years, we've connected land sellers with buyers in Arkansas, Louisiana, Mississippi, and Tennessee.



For more information or to  
schedule a property tour, contact:

**COLLIER WATKINS**   **GAR LILE**

501.837.4868 (m)  
cwatkins@lilerealestate.com

501.920.7015 (m)  
glile@lilerealestate.com

Scan for  
more info







1 Allied Drive, Suite 2220  
Little Rock, Arkansas 72202

**[WWW.LILEREALESTATE.COM](http://WWW.LILEREALESTATE.COM)**



501.374.3411 (Office)  
501.421.0031 (Fax)

**[INFO@LILEREALESTATE.COM](mailto:INFO@LILEREALESTATE.COM)**