



SUNNYSIDE CREEK RETREAT

A Recreational and Timberland Investment Opportunity

144± Surveyed Acres | \$439,200.00

Conway County, Arkansas

PRICE IMPROVEMENT



AGRICULTURE | RECREATION | TIMBERLAND

Traditional Brokerage + Sealed Bids + Consulting

LICENSED IN ARKANSAS, LOUISIANA, MISSISSIPPI, AND TENNESSEE



SUNNYSIDE CREEK RETREAT

QUICK FACTS

Acreage

144± surveyed acres

Location

Conway County, Arkansas

Access

Gated access from Sunset Lane

Recreation

Deer, turkey, and small game hunting

Timber Stocking

Mixed aged hardwoods and planted pine plantation

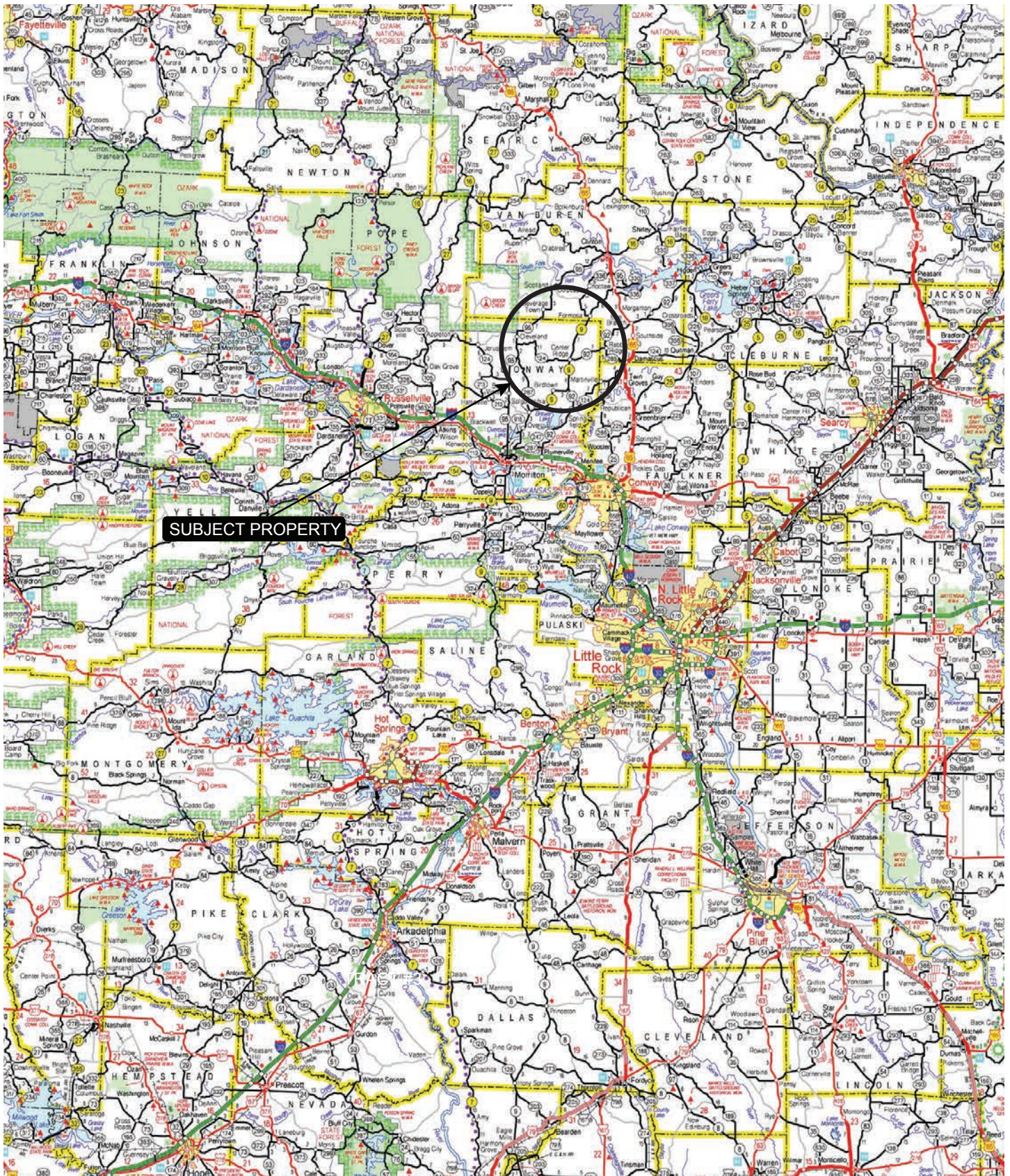
Offering Price

\$439,200.00 (originally
\$465,000.00)

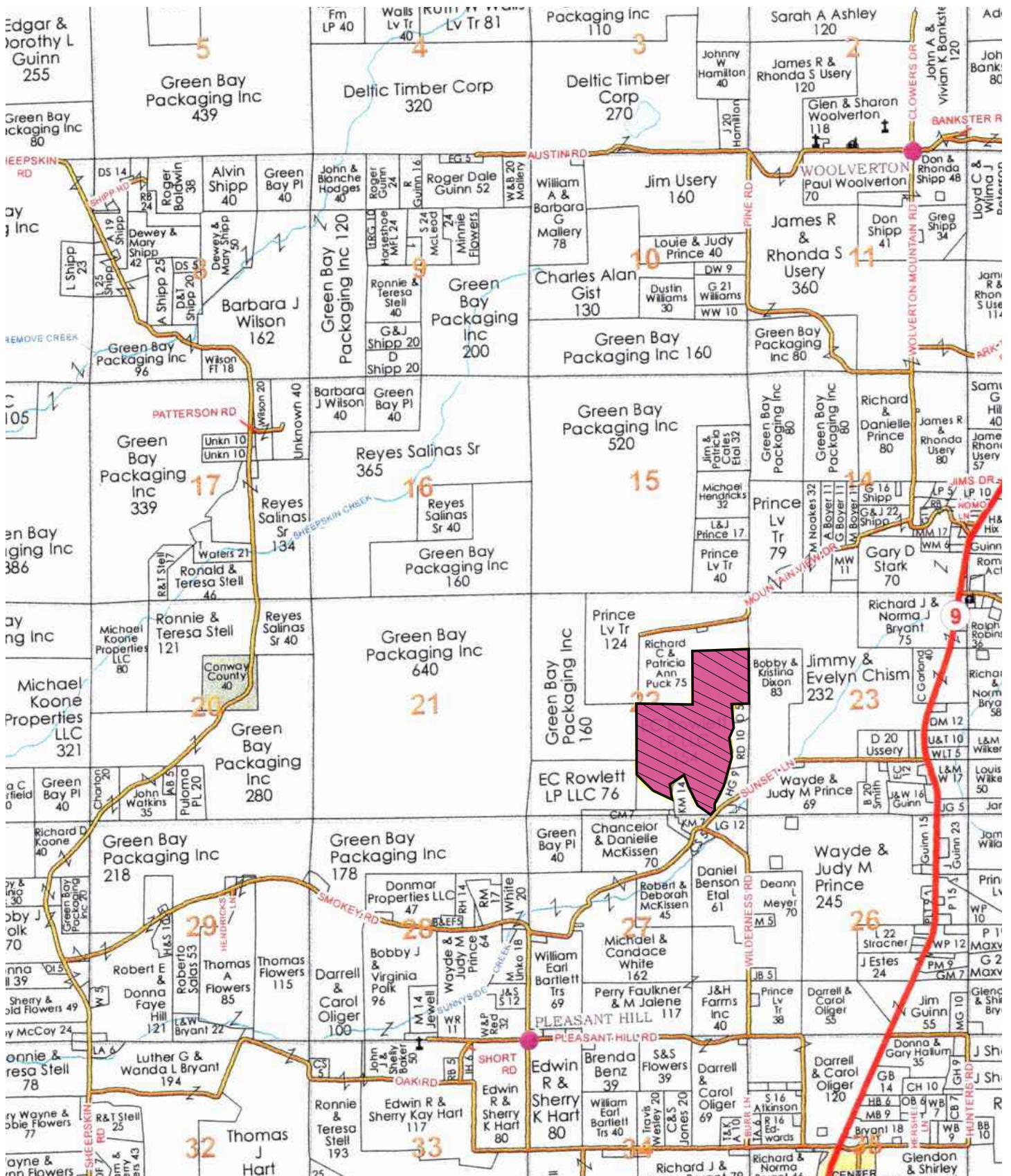


● 08/14/2025 12:01PM

VICINITY MAP



OWNERSHIP MAP



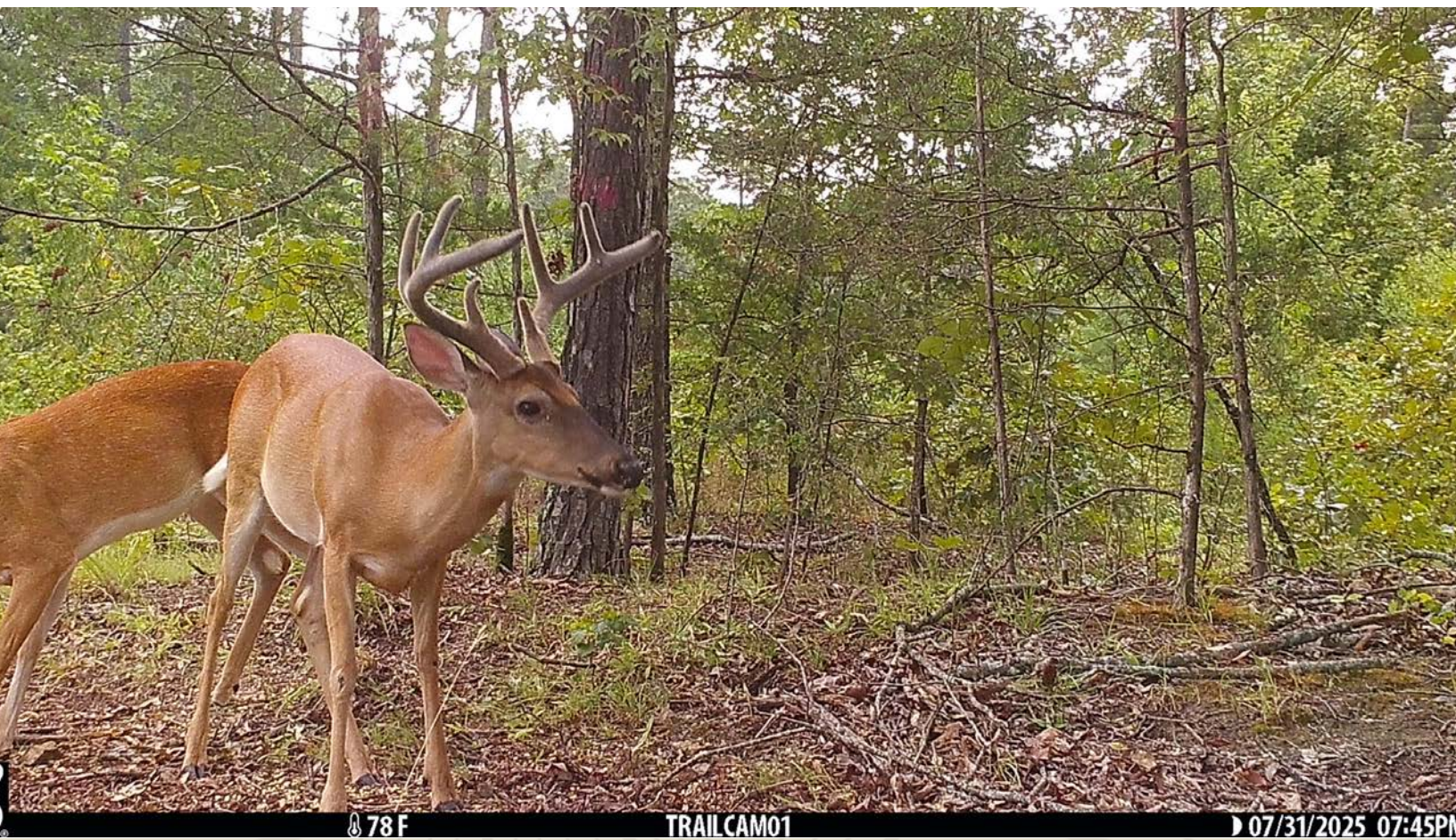
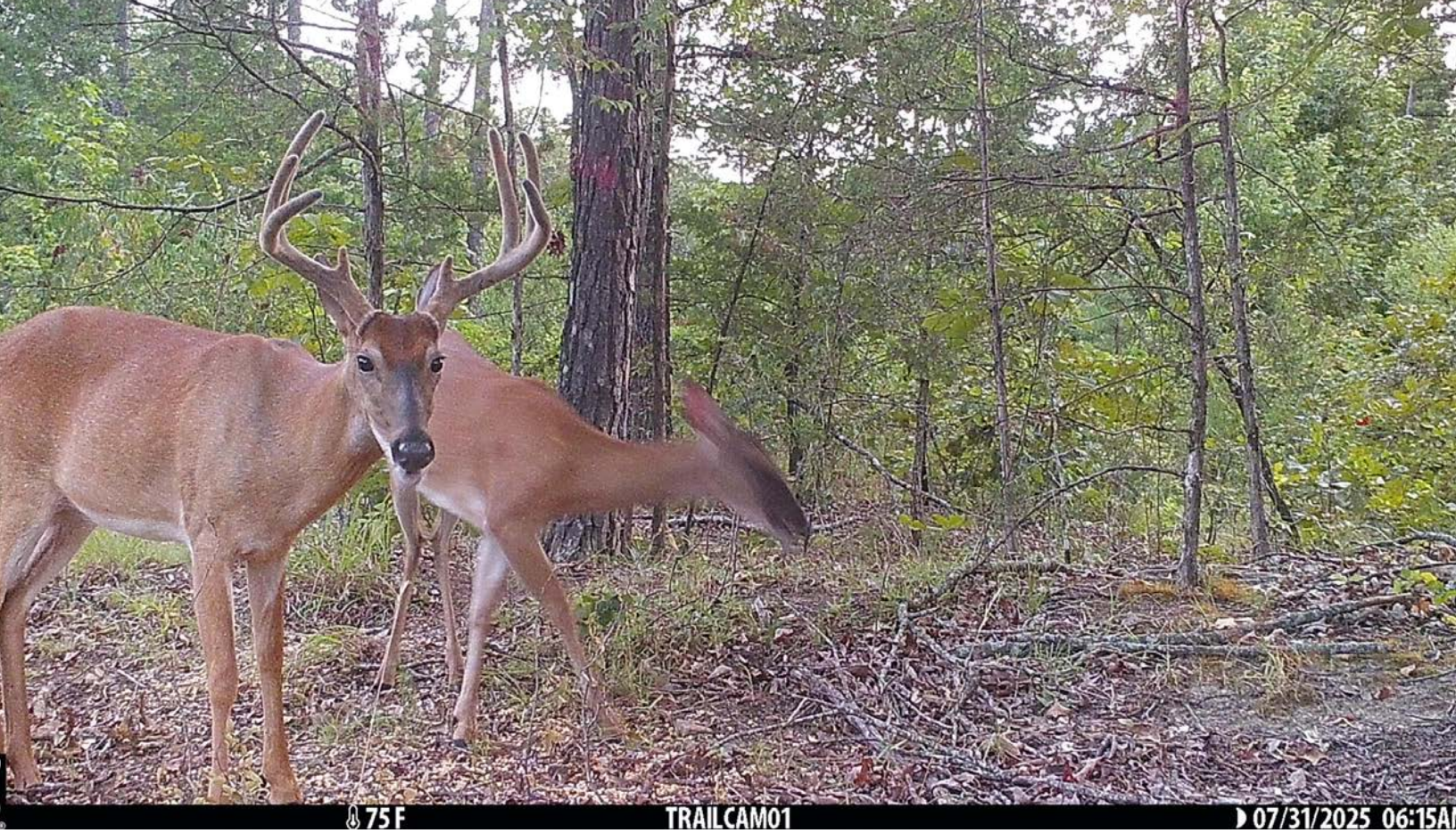
PROPERTY DESCRIPTION

SUNNYSIDE CREEK RETREAT

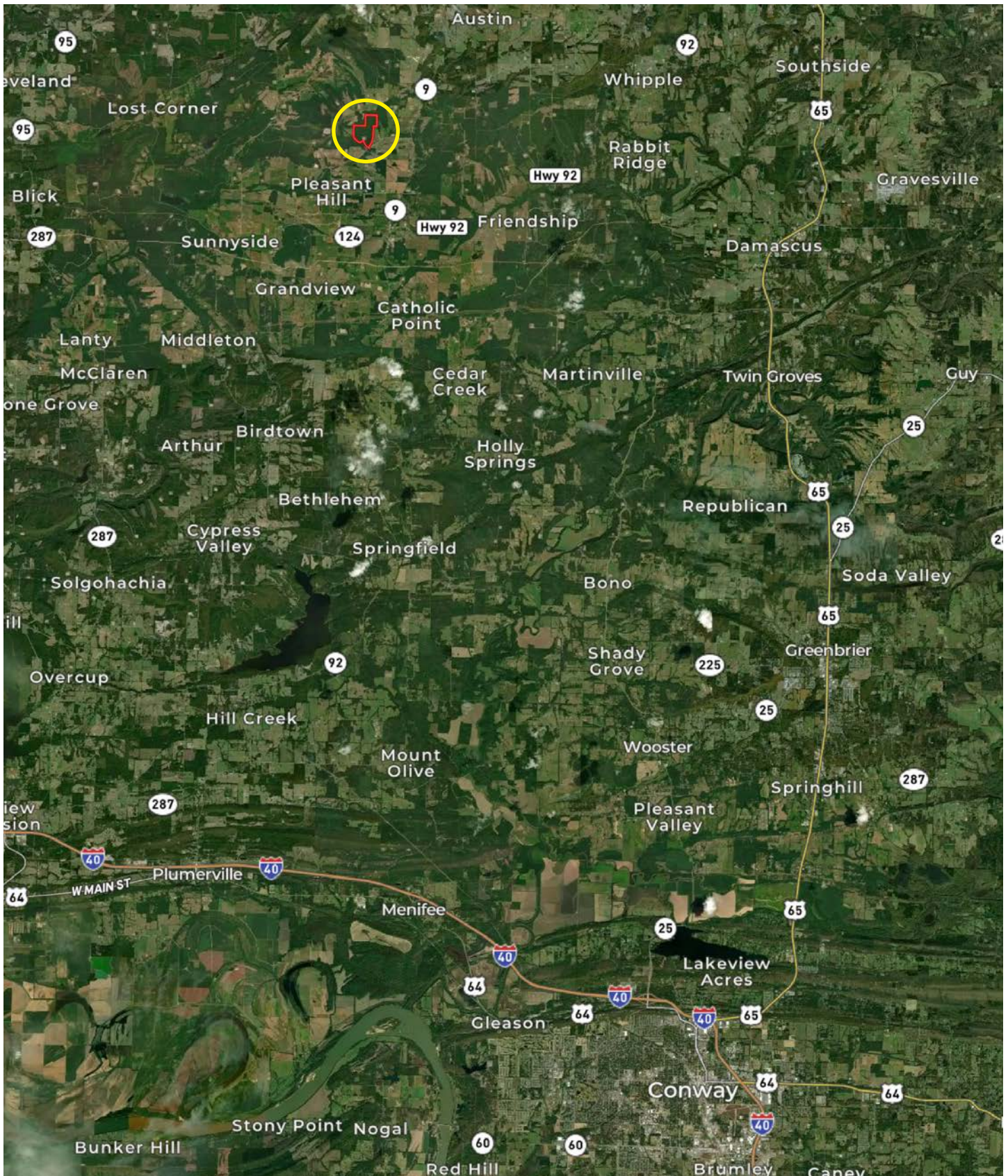
The Sunnyside Creek Retreat is composed of 144± surveyed acres located in Conway County, Arkansas, just north of the community of Center Ridge. This property offers deer and turkey hunting opportunities that are enhanced by the numerous developed food plots on the property. Access is gated and considered excellent from Sunset Lane, and a good internal road system further aids recreational opportunities. Water and electricity are available at Sunset

Lane and a cabin site could easily be established on the property. The timber stocking is predominantly mixed aged hardwoods with an additional 12± acres being planted in a pine plantation. Cherokee Wildlife Management Area borders the property to the west and offers private access to over 2,500 acres of public deer and turkey hunting, as well as other small game hunting.





LOCATION MAP



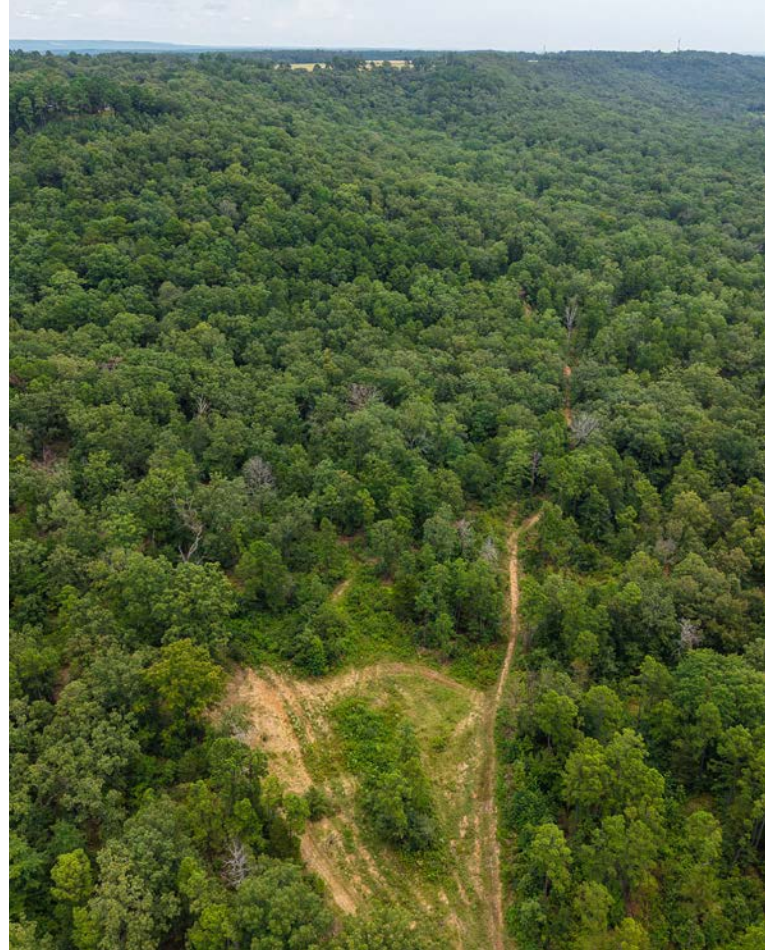
LOCATION & ACCESS

Conway County, Arkansas
Central Region of Arkansas

Mileage Chart

Center Ridge, AR	3 Miles
Greenbrier, AR	24 Miles
Morrilton, AR	26 Miles
Conway, AR	29 Miles

Access is gated and considered excellent from
Sunset Lane.



100 F

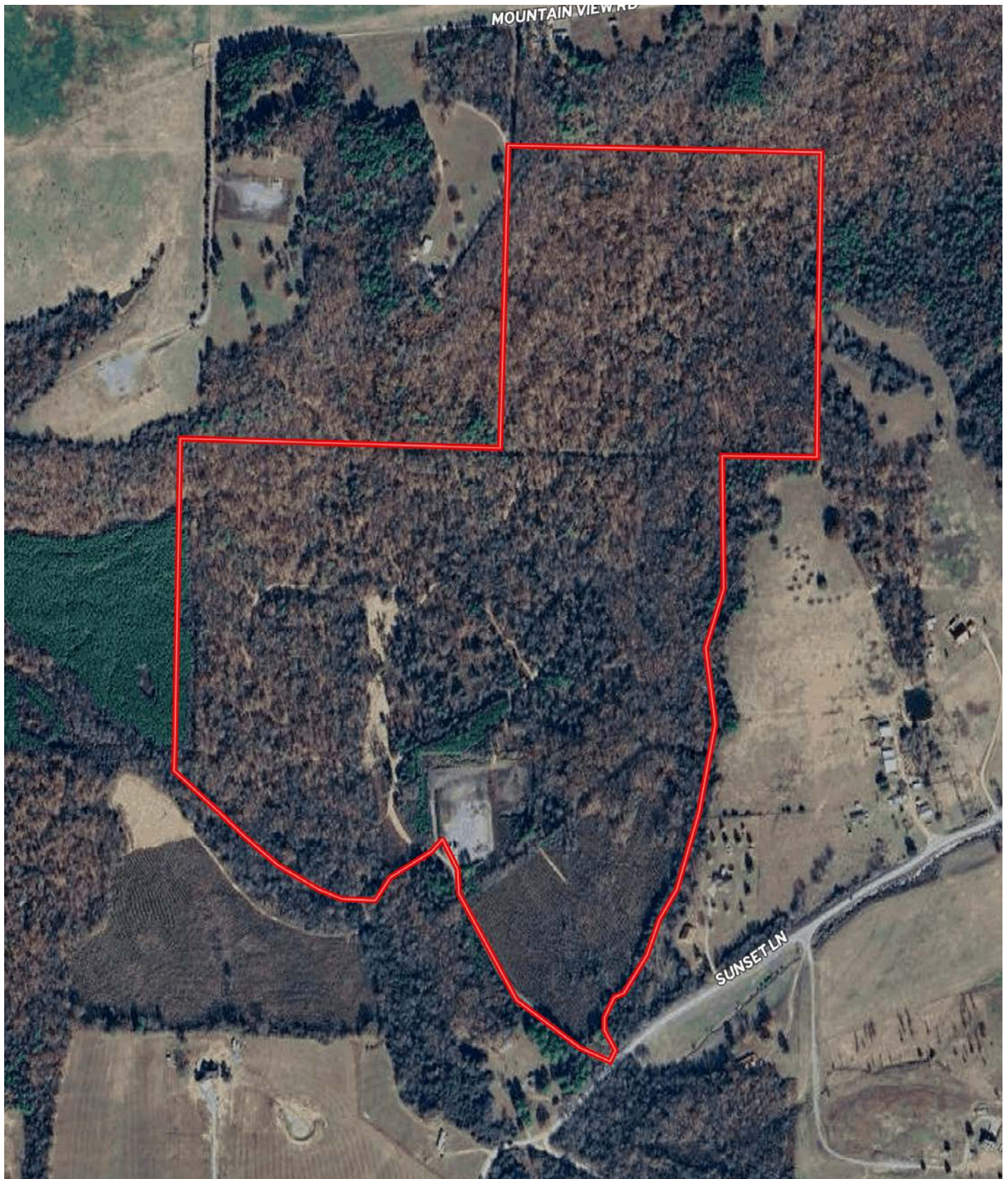
TRAILCAM01

08/14/2025 01:19PM

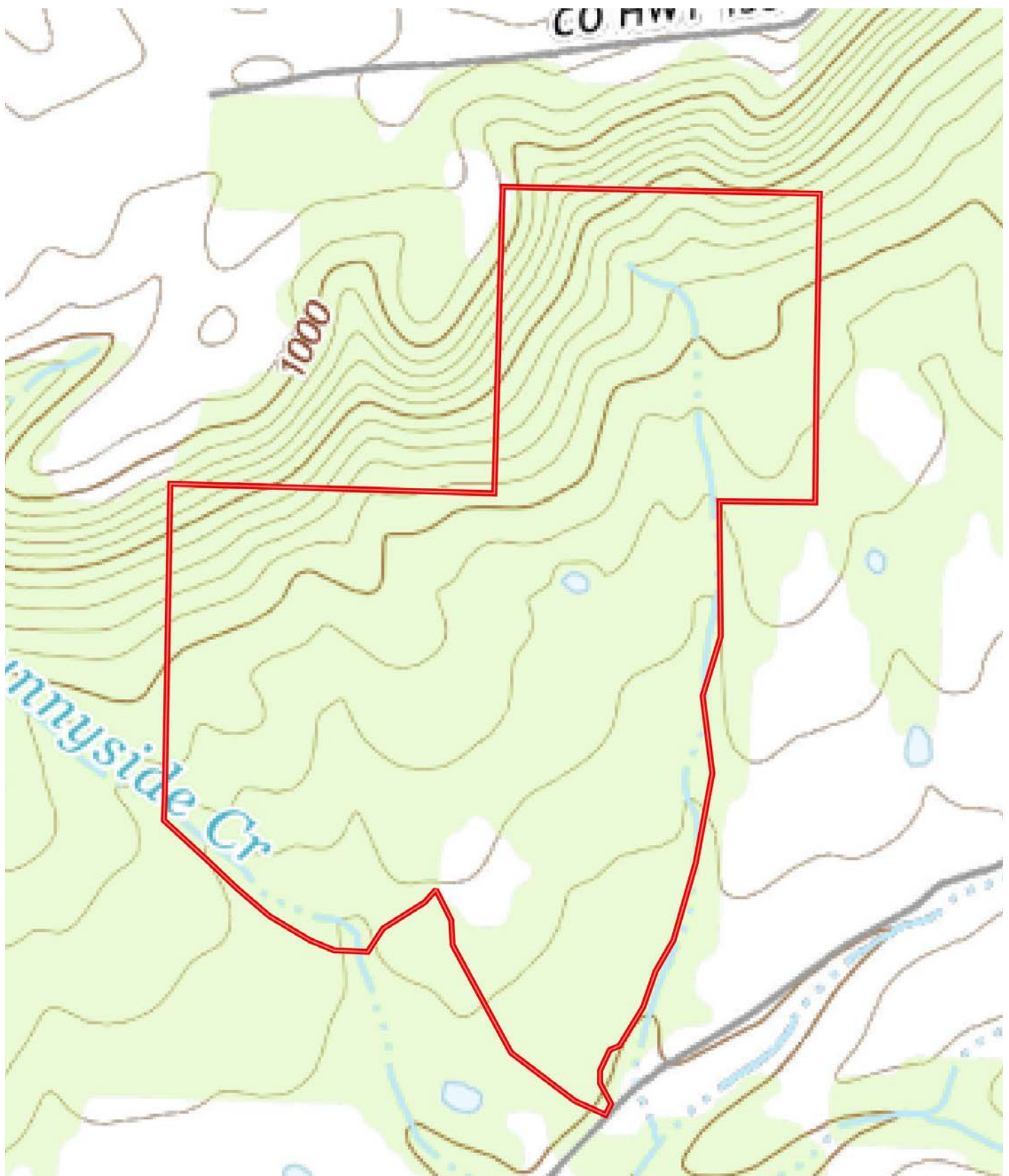




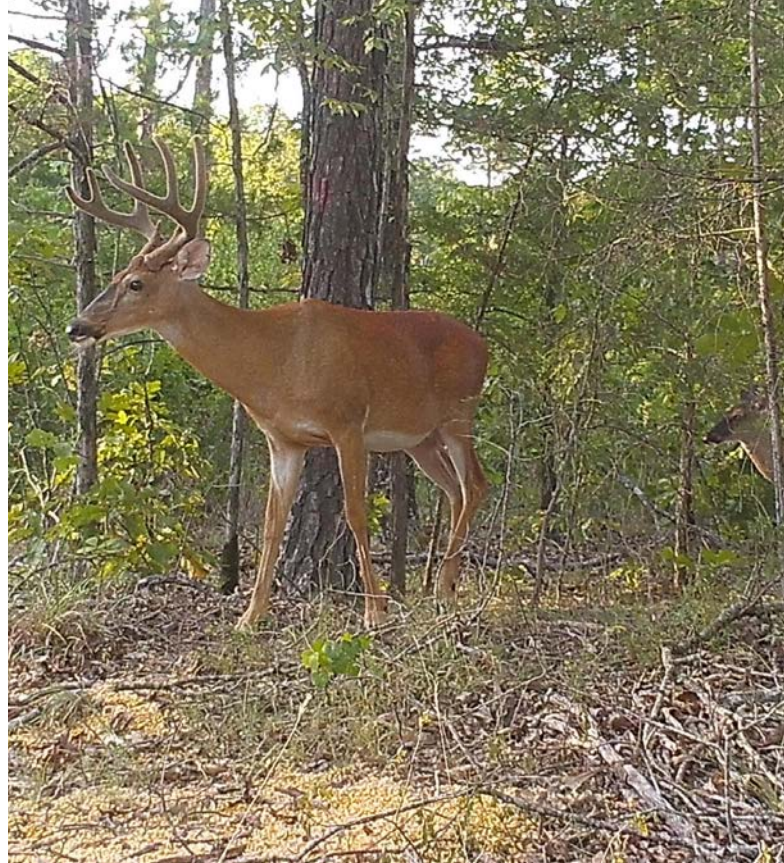
AERIAL MAP



TOPOGRAPHY MAP







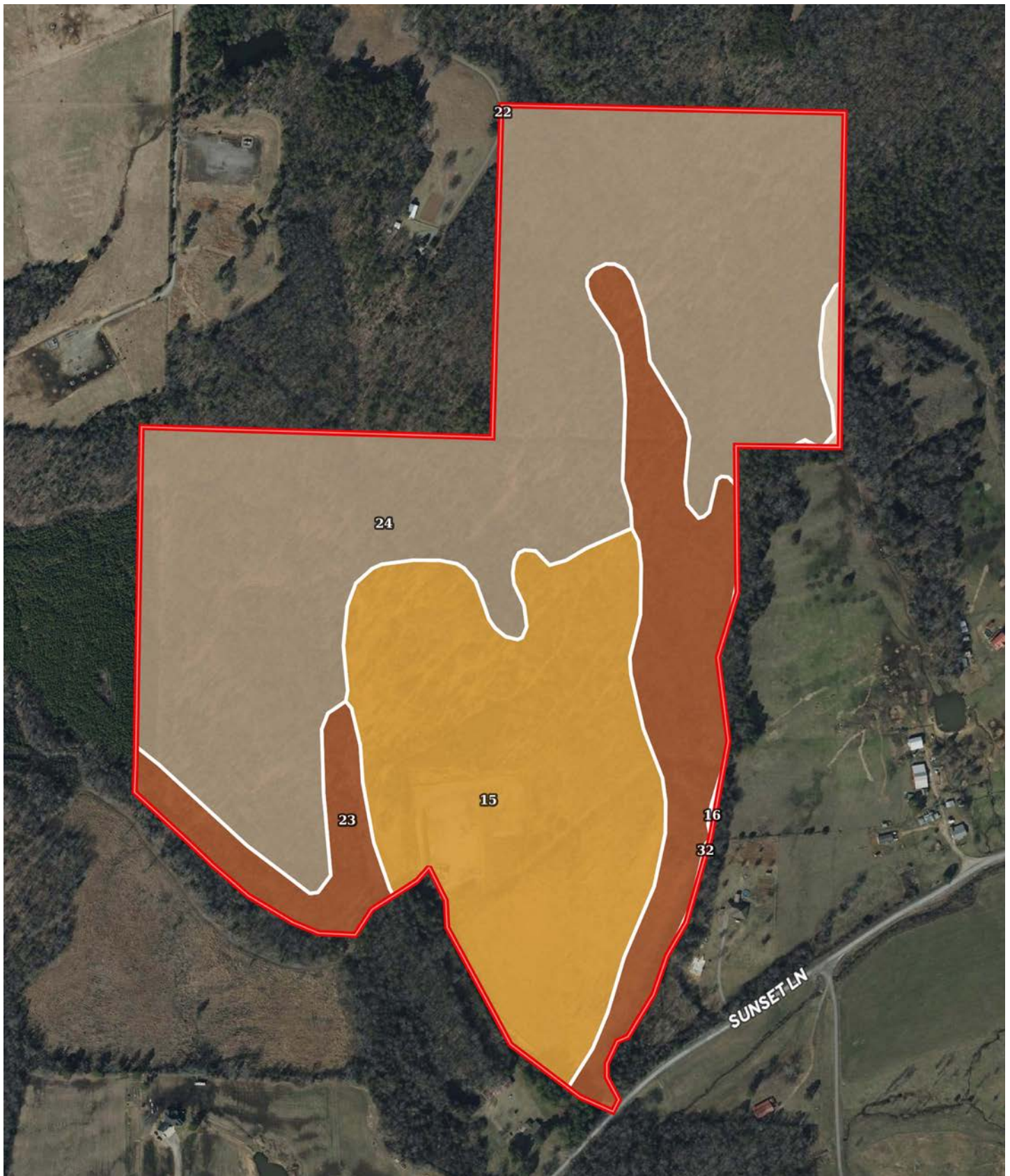
78 F

TRAILCAM03

07/30/2025 07:3



SOIL MAP

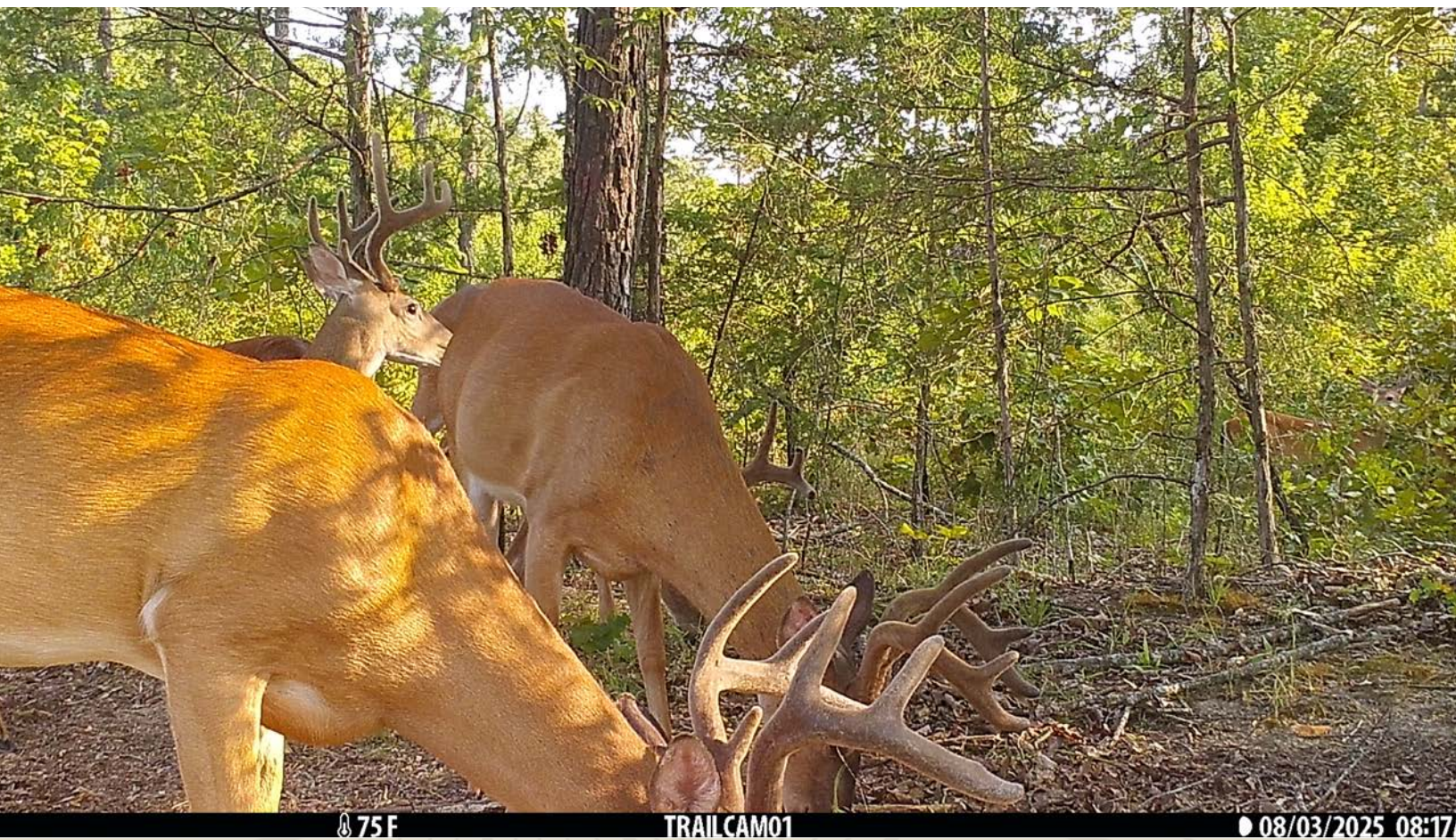
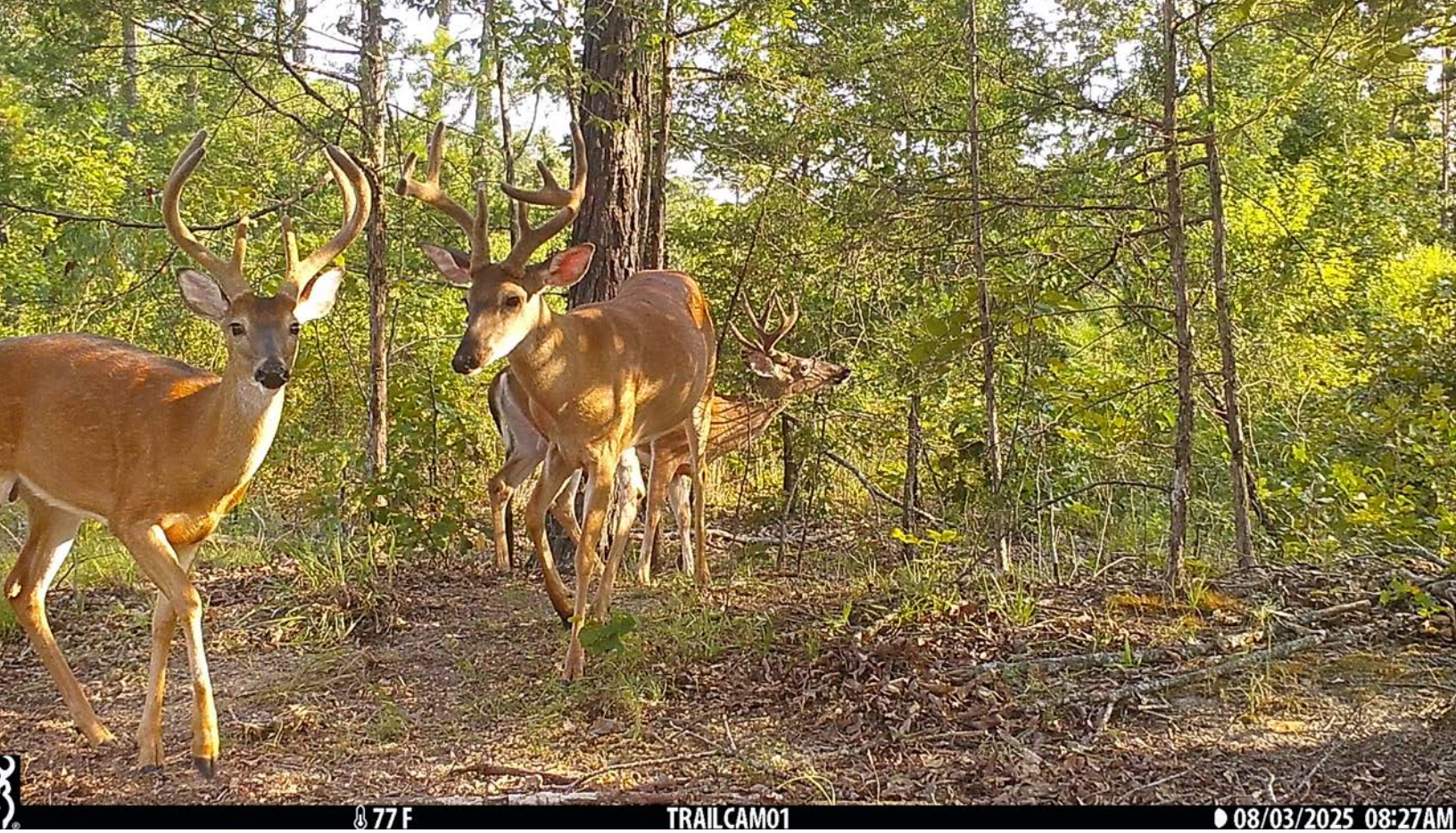


SOIL MAP KEY

SOIL CODE	SOIL DESCRIPTION	ACRES	%	CPI	NCCPI	CAP
24	Mountainburg stony fine sandy loam, 12 to 40 percent slopes, rocky	80.05	54.31	0	5	7s
15	Linker fine sandy loam, 1 to 3 percent slopes	42.06	28.53	0	52	2e
23	Mountainburg gravelly fine sandy loam, 8 to 12 percent slopes	24.23	16.44	0	22	6e
16	Linker fine sandy loam, 3 to 8 percent slopes	0.99	0.67	0	51	3e
32	Sallisaw silt loam, 3 to 8 percent slopes	0.07	0.05	0	75	3e
22	Mountainburg gravelly fine sandy loam, 3 to 8 percent slopes	0.02	0.01	0	22	6e
TOTALS		147.42(*)	100%	-	21.55	5.38

(*) Total acres may differ in the second decimal compared to the sum of each acreage soil. This is due to a round error because we only show the acres of each soil with two decimal.

Capability Legend								
Increased Limitations and Hazards								
Decreased Adaptability and Freedom of Choice Users								
Land, Capability								
	1	2	3	4	5	6	7	8
'Wild Life'	•	•	•	•	•	•	•	•
Forestry	•	•	•	•	•	•	•	
Limited	•	•	•	•	•	•	•	
Moderate	•	•	•	•	•	•		
Intense	•	•	•	•	•			
Limited	•	•	•	•				
Moderate	•	•	•					
Intense	•	•						
Very Intense	•							
Grazing Cultivation								
(c) climatic limitations (e) susceptibility to erosion								
(s) soil limitations within the rooting zone (w) excess of water								



RESOURCES & PRICE

Mineral Rights

All mineral rights owned by the Seller, if any, shall transfer to the Buyer.

Real Estate Taxes

\$147.00 (estimated)

Offering Price

\$439,200.00 (originally \$465,000.00)

To learn more about the Sunnyside Creek Retreat or to schedule a property tour, contact Gardner Lile or Collier Watkins of Lile Real Estate, Inc.

Gardner Lile

501-658-9275 (m)

gardner@lilerealestate.com

Collier Watkins

501-837-4868 (m)

cwatkins@lilerealestate.com





8 91F

TRAILCAM03

07/29/2025 07:16PM



8 78F

TRAILCAM03

07/30/2025 07:34AM







DISCLOSURE STATEMENT: Lile Real Estate, Inc. is the listing agency for the owner of the property described within this offering brochure. A representative of Lile Real Estate, Inc. must be present to conduct a showing.

The management of Lile Real Estate, Inc. respectfully requests that interested parties contact us in advance to schedule a proper showing and do not attempt to tour or trespass on the property on their own. Thank you for your cooperation.

Some images shown within this offering brochure are used for representative purposes and may not have been taken on location at the subject property. This offering is subject to errors, omissions, change or withdrawal without notice. All information provided herein is intended as a general guideline and has been provided by sources deemed reliable, but the accuracy of which we cannot guarantee.

CONNECTING LAND BUYERS AND SELLERS SINCE 1993.

Lile Real Estate is a dedicated team of professionals with an in-depth understanding and a network of qualified buyers within the Mid-South and across the country. For over 30 years, we've connected land sellers with buyers in Arkansas, Louisiana, Mississippi, and Tennessee.



For more information or to
schedule a property tour, contact:

GARDNER LILE

501.658.9275 (m)
gardner@lilerealestate.com

COLLIER WATKINS

501.837.4868 (m)
cwatkins@lilerealestate.com

Scan for
more info





1 Allied Drive, Suite 2220
Little Rock, Arkansas 72202

WWW.LILEREALESTATE.COM



501.374.3411 (Office)
501.421.0031 (Fax)

INFO@LILEREALESTATE.COM